



LEAF



[Exterior design](#) | [Interior design](#) | [Technology & Performance](#) | [Style & Accessories](#)

[Print](#) | [Close](#)



Nissan LEAF

More range, more power, more choice

The Nissan LEAF is brimming with new possibilities to offer you multiple driving experiences with just one car. Whether you're a city dweller, commuter or just a dedicated 100% electric driver in search of a more exciting ride, prepare for a more confident, connected, electrifying journey in the simply amazing Nissan LEAF.

Images and descriptions shown are for guidance purpose. In some instances photos are of non-local specification vehicles and do not represent specific model, grade or offer. The features shown may not be available or may not be available as standard or only as option.



[Exterior design](#) | [Interior design](#) | [Technology & Performance](#) | [Style & Accessories](#)

[Page 1](#) | [Page 2](#)

[Print](#) | [Close](#)





Sail through the city

Cruise the urban landscape with a range of 168 miles for 39kWh batteries [1]. Choose B-mode for regenerative braking, use the e-pedal for greater control and switch to eco-mode for longer-lasting fun. Activate ProPILOT [2] and Nissan Intelligent Mobility technologies to make light work of heavy traffic and make the road yours.

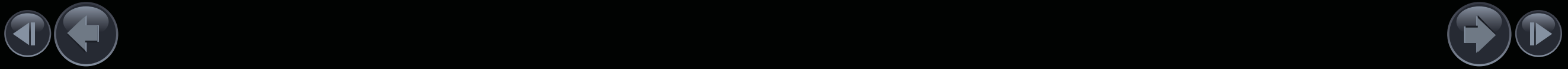
Enjoy commuting like never before

Switch to D-Mode and activate ProPILOT [2] to reduce the stress of a long commute – and go a whole lot further by multiplying your range on the go thanks to an extensive rapid charging network.

Empower your 100% electric drive

For even more driving excitement, opt for more power and even more range.

[1] WLTP figures shown are for comparability purposes. Actual real-world driving results may vary depending on factors such as the starting charge of the battery, accessories fitted after registration, weather conditions, driving styles and vehicle load.
[2] ProPILOT standard on Tekna, optional on N-Connecta grades. It is your responsibility to stay alert, drive safely and be in control of the vehicle at all times. Driver assist features have speed and other limitations and should not be solely relied on. For more information, please refer to the owner's manual or visit www.nissan.co.uk/techterms





FEEL GREATER CONTROL

with the Nissan e-Pedal. Yes, you only need one pedal to accelerate, decelerate and brake in the Nissan LEAF – it's amazing.

REVEL IN THE SENSATION

of instant power at take-off and the pure pleasure of intelligent driving technologies for a smooth, exhilarating ride.

BOOST YOUR CONFIDENCE

with Nissan ProPILOT [1]. Simply activate it and select your speed and distance for an easier, more relaxed and safer drive all round.

SEE AND SENSE MORE

with Intelligent Around View Mirror and smart technologies like Rear Cross Traffic Alert and Blind Spot Intervention [1].

STAY CONNECTED

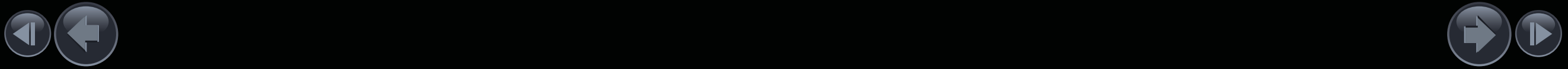
with the new 8" touch screen, Apple CarPlay and Android Auto add seamless connectivity between your smartphone and your car 24/7 [2]

Thrill your senses

It's powerful, it's intense, it's a new driving sensation. Get ready for an experience that pushes all the right buttons when you're behind the wheel. Need to feel connected 24/7? The NissanConnect system is made for you. Always ready to go a step further? There's no stopping the Nissan LEAF.

[1] ProPILOT standard on Tekna. It is your responsibility to stay alert, drive safely and be in control of the vehicle at all times. Driver assist features have speed and other limitations and should not be solely relied on. For more information, please refer to the owner's manual or visit www.nissan.co.uk/techterms.

[2] NissanConnect should only be used when it is safe to do so in accordance with the Highway Code. Compatibility restrictions apply. Visit Nissan.co.uk to find out more.



Ride the city like never before

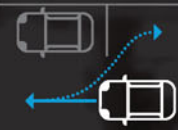
It's clever, it's got serious stamina and it's great fun: navigating the urban jungle is a joy with the Nissan LEAF. Imagine driving with just one pedal: it makes driving around all those roundabouts and up and down busy streets fuss-free. Stuck in town in a traffic jam? No hassle.



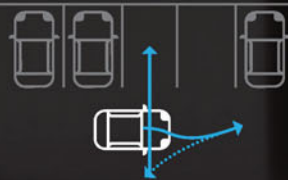
e-Pedal. Speed up, slow down and brake using nothing more than the accelerator pedal. It's so simple.



Parallel Parking. Find a winning spot? Pull up ahead of it, hold the button and watch the Nissan LEAF just glide in.



Bay Parking. Pull up to an open space, hold the button and watch the Nissan LEAF perfectly park itself in between the lines.



It's never been easier to park

One of the biggest bugbears of city driving is city parking. All that maneuvering, twisting and reversing takes more time and effort than you have to give. With ProPILOT Park [1], it's hassle-free. Need to squeeze into a space in a crowded little carpark? Want to grab that spot on the side street? Just pull up, hold the button, let go of the wheel and watch your LEAF park perfectly. No hands, no feet, just an easier, more convenient way to park.

[1] Optional on Tekna grades. It is your responsibility to stay alert, drive safely and be in control of the vehicle at all times. Driver assist features have speed and other limitations and should not be relied on. For more information, please refer to the owner's manual.

Get a little warning before you make a move

FEEL MORE AROUND YOU Even if you can't see what might be round the corner, your Nissan LEAF is taking note. Whether you're reversing out of a parking space or changing lanes on the motorway, Nissan Intelligent Mobility can make you more aware of your surroundings, giving you a whole new level of confidence.



INTELLIGENT AROUND VIEW MONITOR [1]

lets you know when it detects moving objects near your vehicle. This system increases your view of the surroundings.



REAR CROSS TRAFFIC ALERT [1]

This feature helps you reverse out of a space more safely. It watches around the rear of your LEAF, and can warn you about cars it detects creeping up on you from either side.

[1] It is your responsibility to stay alert, drive safely and be in control of the vehicle at all times. Driver assist features have speed and other limitations and should not be relied on. For more information, please refer to the owners manual.



Make the most
of the journey



CAN EVEN
COME TO A
COMPLETE STOP

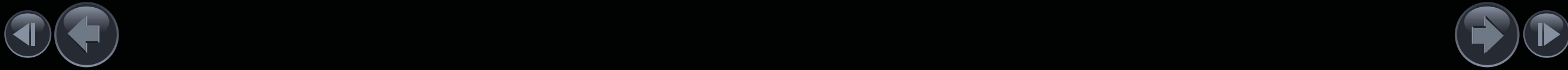
MAINTAINS YOUR
PRE-SET SPEED AND
DISTANCE

KEEPS AN EYE ON
THE FLOW OF TRAFFIC

With a range of 168 miles [1] that's easy to extend thanks to a large rapid charging network, plus the option of driving in D-Mode and having **Nissan ProPILOT** to support you at the touch of a button, the idea of hitting the motorway has never been so inspiring. **Nissan ProPILOT** [2] follows the car ahead at a pre-set distance and keeps you centred in your lane. It can even bring your LEAF to a full stop and hold it there in traffic jams to save your energy. It turns your typical morning commute into a great way to start the day.

[1] WLTP figures shown are for comparability purposes. Actual real-world driving results may vary depending on factors such as the starting charge of the battery, accessories fitted after registration, weather conditions, driving styles and vehicle load.

[2] ProPILOT standard on Tekna, optional on N-Connecta. It is your responsibility to stay alert, drive safely and be in control of the vehicle at all times. Driver assist features have speed and other limitations and should not be solely relied on. For more information, please refer to the owner's manual or visit www.nissan.co.uk/techterms.





The right technology at the right moment

Very smart, the Nissan LEAF is packed with versatile technology that steps in when you need it most. Like, for example, when you're cruising down the motorway and the traffic suddenly slows down: Intelligent Emergency Braking with Pedestrian Recognition [1] keeps an eye out and is ready to apply the brakes if necessary. It's good to know you're not alone. With an entire suite of Nissan Intelligent Mobility features to back you up and help keep you out of trouble, the Nissan LEAF gives you more confidence and control, while making every drive more exciting.

[1] It is your responsibility to stay alert, drive safely and be in control of the vehicle at all times. Driver assist features have speed and other limitations and should not be solely relied on. For more information, please refer to the owner's manual or visit www.nissan.co.uk/techterms

Imagine driving with a suite of Nissan Intelligent Mobility features* backing you up that includes:



ProPILOT [1]:

It keeps an eye on the flow of traffic to maintain your pre-set speed and distance and keep you centred. It will even warn you if you start drifting out of lane and can bring you to a complete stop in traffic jams.



ProPILOT Park [1]:

No hands, no feet, just an easier way to park using only one finger, taking the stress out of the urban environment.



INTELLIGENT CRUISE CONTROL:

Watches the flow of traffic to take the tedium out of motorway driving.



INTELLIGENT LANE INTERVENTION:

Helps keep you where you want to be. It taps the brakes to help gently guide you back if it detects that you're unintentionally straying out of your lane.



INTELLIGENT AUTO HEADLIGHTS WITH FULL LED:

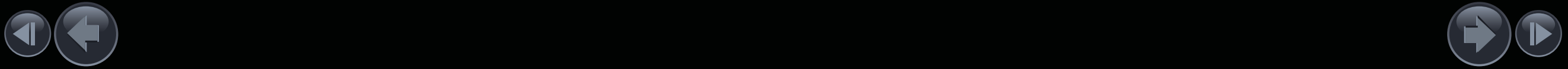
Headlights that light your way by automatically turning on when it gets dark and auto-dipping high beam for oncoming vehicles



BLIND SPOT INTERVENTION [1]:

Alerts you if there's a vehicle in the blind spot area on either side of the car, and brings you back into line.

[1] ProPILOT standard on Tekna, optional on N-Connecta. ProPILOT Park is available as an option on Tekna grades. ProPILOT is an Advanced Driver Assist technology but cannot prevent collisions. ProPILOT is intended for "Eyes on/Hands On" for highways only (road separated by barriers.) It is your responsibility to stay alert, drive safely and be in control of the vehicle at all times. Driver assist features have speed and other limitations and should not be solely relied on. For more information, please refer to the owner's manual or visit www.nissan.co.uk/techterms.



Performance driven for a 100% electric future

WIND-DIFFUSING
SIDE MIRRORS

LOWER
DIFFUSER

CONTINUOUS FLAT
UNDERBODY

Slice through the air with greater efficiency. Thanks to its advanced aerodynamic design, the Nissan LEAF delivers on every level: enjoy instant torque and an unbelievably quiet ride with minimum impact on the environment and your wallet. This is the future: power, pleasure and positivity.

[Exterior design](#) | [Interior design](#) | [Technology & Performance](#) | [Style & Accessories](#)

[Print](#) | [Close](#)

[Page 1](#) | [Page 2](#) | [Page 3](#) | [Page 4](#) | [Page 5](#) | [Page 6](#) | [Page 7](#) | [Page 8](#) | [Page 9](#) | [Page 10](#) | [Page 11](#) | [Page 12](#) | [Page 13](#) | [Page 14](#)



Charging your LEAF couldn't be easier: just plug it into a regular, designated socket for an overnight top up with the optional EVSE Cable. If you're in a hurry, use one of our approved home charging solutions. They're safe, smart and convenient - and they'll keep your Nissan LEAF charged and ready to go.



HOME CHARGING SOLUTIONS – 6.6KWH POWER

Dynamic Power Management ensures optimal charging, using the available energy from your home connection in a smarter, more efficient way.



NISSAN LEAF: FULL CHARGE IN AROUND 7H30 MIN

Choose your charging and keep moving



PUBLIC QUICK CHARGING CHADEMO 50KW RAPID CHARGER [1]



NISSAN LEAF : 20% TO 80% IN AROUND 60 MIN [1]

[1] Figures quoted are for 39kWh (LEAF). Time dependent on charging conditions, including charger type and condition, battery temperature as well as ambient temperature at point of use. Indicated rapid charging time requires use of a CHADEMO rapid charger. The Nissan LEAF is designed to support the majority of journeys in daily life and is equipped with charging safeguards to protect the battery during repeated rapid charging sessions in a short period of time. The time taken for successive rapid charging in a short period of time. The time taken for successive rapid charging can take longer if the battery temperature activates the battery safeguarding technology.

Plug into savings embrace the freedom

FIND OUT WHY MORE IS LESS Driving electric has more than a few unexpected benefits. Without a petrol engine, of course there are no more fill-ups, but you also do away with a lot more. There are fewer moving parts overall, which translates into less maintenance. Now you just have to decide what to do with all the extra free time.



GOODBYE PETROL ENGINE

With a 100% electric motor, say goodbye to all the check-ups and maintenance, and hello to more time on the road. Save time and money by charging your battery instead of filling up the tank.



GOODBYE PETROL STATION

Forget about having to stop at the petrol station on the way to work. Now you can wake up fully charged and ready to take on the day.



GOODBYE OIL CHANGES AND MORE

No more petrol means no more oil or oil changes. And no more transmission, spark plugs, radiator, belts, and more, which makes ownership costs go down by up to 40%. Free time goes up.



HELLO INNOVATIVE BATTERY

LEAF's battery pack has been developed in-house, rigorously tested, and has an extraordinary record of reliability, meaning you can feel confident you are driving some of the best battery technology around.



Seamless connectivity to your world

The 8" touchscreen in the Nissan LEAF is your portal to NissanConnect: through intuitive navigation, advanced technology and more. Our smartphone app offers a growing range of services including sending journey plans to your Nissan LEAF.

CHARGING

Get your battery status wherever you are with the NissanConnect Services app, and begin charging right from your phone so you can take advantage of cheaper night-time electricity [2].

NAVIGATION AND DRIVING

Turn-by-turn navigation including send to car gets you where you need to go. Check the distance you've driven, the number of trips you made directly from your smartphone [2].

CONNECTIVITY

Connect your Android or iOS device for seamless connectivity including voice control. [1] Access your favourite music, messaging and other apps to stay informed and entertained as you drive.

CONVENIENCE AND COMFORT

Access remote services from the NissanConnect Services app [2]. And if you ever need help, Nissan Assistance is just a click away.



Scan the code to download now the NissanConnect Services app and connect it to your Nissan.



NissanConnect Services



[1] To use NissanConnect Services you need a smartphone with compatible iOS or Android operating system, and a SIM card with a data option from a mobile service provider. Download the free NissanConnect Services app and create an account. Connect your smartphone with your vehicle equipped with NissanConnect Services by logging in using your username and password. All services are subject to mobile network coverage. NissanConnect Services are free or available for an additional charge on subscription subject to grade. For further information, visit Nissan.co.uk or contact your local Nissan Dealer.
[2] NissanConnect Services available from N-Connecta grade.

The feature responsiveness and use can be impacted when car is receiving a bad signal. For optimal use, please make sure your car is under good network coverage.







BATTERY MANAGER
Make sure your vehicle is charged before starting your journey. You can always start charging your Nissan LEAF from your smartphone when it is convenient for you.
Free service ⁽²⁾



MAPS & LIVE TRAFFIC
Get real-time traffic information, provided by TomTom, that helps you plan smarter ways round congestion or accidents so you can plan every journey better.
Free service for 3 years ⁽³⁾



IN-CAR WIFI
Use your car as a WiFi hotspot to connect to the internet on board. Let's go!
Paid service ⁽⁴⁾



REMOTE CONTROL SERVICES
Make your car stand out in any situation - flash the lights and sound the horn. You can also pre-heat or cool your Nissan LEAF before entering, for maximum comfort. Your battery will stay at its charge when it is plugged to a charger.
Free service for 3 years ⁽³⁾



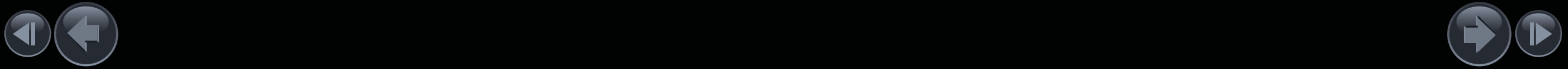
YOUR MUSIC. YOUR WAY
Access your music using Bluetooth[®], USB or connect with Apple CarPlay[®] or Android Auto[®].



NissanConnect

Featuring a stunning floating 8" display screen, NissanConnect for Nissan LEAF is your central control system. Connect your phone to your car, optimize your routes, better manage your battery, get help and support throughout your journey and even improve the way you drive. Simply download the NissanConnect Services App to get in sync. NissanConnect also brings the familiar experience of your smartphone via Apple CarPlay[®] and Android Auto[®](1).

(1) Apple CarPlay[®] and Android Auto are available free of charge, depending on model and/or grade. For more information, please contact your Nissan dealer.
(2) Free services (Nissan on Google Assistant, Driving History & Analysis, Nissan Help & Assistance, Breakdown Assistance) are available free of charge for a period of 7 years, available from N-Connecta grade. For more information, please contact your Nissan dealer.
(3) Maps & Live Traffic, Remote Control Services, Smart Alerts are available free of charge for a period of 3 years and then available for a fee £0.99/m (Smart Alerts), £1.99/m (Remote Control Services), £2.99/m (Maps & Live Traffic), available from N-Connecta Grade. For more information, please contact your Nissan dealer.
To use the NissanConnect services you need a NissanConnect user account and have to register and log in to NissanConnect with your username and password. To use the free NissanConnect Services App, you need a smartphone with a compatible iOS or Android operating system and a SIM card with data option with an existing or separate mobile phone contract between you and your mobile service provider. All services are subject to mobile network coverage.
The use of NissanConnect on-board internet is made possible via an integrated wireless internet connection. Data packets are obtained via selected external mobile communication providers in accordance with their terms and conditions (depending on the availability in your country). For further information, please visit www.nissan.co.uk and your Nissan Dealer.






Experience

comfort at the sound of silence

Step into the luxourious quiet cabin of the Nissan LEAF where you'll find a new level of serenity - until you turn up the Bose® Premium Audio System that is[1]. Add comfort features such as heated seats and steering wheel [2] and every drive has the chance to be amazing.

[1] Bose® Premium Audio System is standard on Tekna.

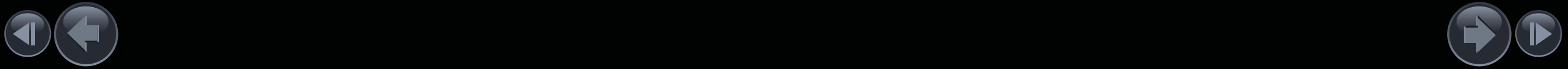
[2] Heated seats standard from N-Connecta grade.



BOSE® PREMIUM AUDIO SYSTEM [1]

Even the audio system is energy-conscious. With seven small, lightweight, and strategically placed speakers, the Bose engineers created an audio system that saves power, without sacrificing sound quality. All so you can rock out more efficiently.

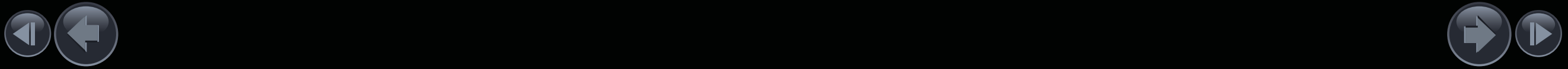
*Features available depending on version, as standard or only as option (at an extra charge).





Load up whatever the day demands 435L

LEAF is ready for next outing with an impressive amount of cargo space, a low rear cargo floor and 60/40 split rear seats that fold down easily. It all adds up to a vehicle that can handle just about anything you ask of it with a capacity of up to 435 litres



Electrify the world

At Nissan, we believe in a sustainable tomorrow, and we're convinced that it will only happen if we act now. That's why we're leading the work on electric mobility solutions to shape the smart cities and create a better future today.



NISSAN ELECTRIC VEHICLES. Join the electric revolution. Start driving the car of the future, today. Nissan's pioneering range of 100% electric cars and vans offer top class performance, allowing you to enjoy your drive while producing zero- tailpipe emissions.

THE NISSAN LEAF 100% ELECTRIC. The Nissan LEAF can travel up to 168 miles* on a single quick charge and can be packed with Nissan Intelligent Technology features including ProPILOT, ProPILOT Park and e-Pedal technology, depending on grade.

*Range figures are obtained from laboratory testing in accordance with EU legislation and are intended for comparison between the different types of vehicles. The information does not refer to a particular individual vehicle and does not constitute part of the offer. The figures may not reflect real driving results. Optional equipment, maintenance, driving behaviour and non-technical factors like weather conditions may affect the official results. Figures were determined under the new Worldwide harmonized Light vehicles Test Procedure (WLTP) test cycle.



Choose a **LEAF** to suit your drive.
Tailored to you.



[Exterior design](#) | [Interior design](#) | [Technology & Performance](#) | [Style & Accessories](#)

[Print](#) | [Close](#)

[Page 1](#) | [Page 2](#) | [Page 3](#) | [Page 4](#) | [Page 5](#) | [Page 6](#) | [Page 7](#) | [Page 8](#) | [Page 9](#) | [Page 10](#) | [Page 11](#) | [Page 12](#) | [Page 13](#) | [Page 14](#)



EUROPE'S BEST SELLING ELECTRIC VEHICLE
HAS NOW TWO VERSIONS
TO MATCH A RANGE OF LIFESTYLES

Nissan LEAF

Up to 168 miles^[1]

for the city driving.

- Full charging overnight on domestic plugs
- Quick charging: 20% to 80% charging in around 60 minutes [2]

MAIN STANDARD FEATURES

ACENTA

Family Focus

- Automatic Climate Control
- Cruise Control
- 8" Touch Screen Display
- Apple Car Play and Android Auto

N-CONNECTA

Urban Style

- Top connectivity combined with 17"
- Alloy Wheels & Privacy Glass
- Heat Pump
- Intelligent Around View Monitor
- Navigation with NissanConnect Services

SHIRO

Special Edition

- Part Synthetic Leather /Part Cloth Seats
- ProPILOT Assist
- Traffic Jam Pilot
- Intelligent Lane Keep Assist
- Electronic Parking brake

TEKNA

Iconic Tech

- ProPILOT [3]
- Electronic Parking Brake
- Intelligent Auto LED Headlights with LED foglights
- Bose Premium Audio with 7 speakers

TAKE THE NEXT STEP
CHOOSE YOUR LEAF



DIMENSIONS

- A: Overall length: 4,490MM
- B: Wheelbase: 2,700MM
- C: Overall width: 1,788MM
- D: Nissan LEAF Overall height: 1,540MM (1,530 mm with 16" alloy wheels)

*Figures provided are pending homologation

CHOOSE YOUR COLOUR



Black Metallic **Z11**



Solid Red **Z10**



Gun Metallic **KAD**



Storm White **QAB**



Pearl Blue **RCJ**



Arctic White **326**
(Only for Shiro Special Edition)



Two Tone Ceramic Grey &
Black Metallic Roof **XFU**



Two Tone Magnetic Red &
Black Metallic Roof **XDS**



Two Tone Magnetic Blue &
Black Metallic Roof **XFU**



Two Tone Blade Silver &
Black Metallic Roof **XDR**



Two Tone Storm White &
Black Metallic Roof **XDF**

[1] Range figures are obtained from laboratory testing in accordance with EU legislation and are intended for comparison between the different types of vehicles. The information does not refer to a particular individual vehicle and does not constitute part of the offer. The figures may not reflect real driving results. Optional equipment, maintenance, driving behavior and non-technical factors like weather conditions may affect the official results. Figures were determined under the new Worldwide harmonized Light Vehicles Test Procedure (WLTP) test cycle.

[2] Figures quoted are for a 39kWh (Nissan LEAF) batteries. Time dependent on charging conditions, including charger type and Condition, battery temperature as well as ambient temperature at point of use. Indicated rapid charging time requires use of a CHAdeMO rapid charger. The Nissan LEAF is designed to support the majority of journeys in daily life and is equipped with charging safeguards to protect the battery during repeated rapid charging sessions in a short period of time. The time taken for successive rapid charging can take longer if the battery temperature activates the battery safeguarding technology.

[3] ProPILOT is available as standard on Tekna grades, and as an option on N-Connecta grades. ProPILOT is an Advanced Driver Assist technology but cannot prevent collisions. ProPILOT is intended for "Eyes on/Hands On" for highways only (road separated by Barriers). It is the driver's responsibility to stay alert, drive safely and remain in control of the vehicle at any time.



DYNAMIC PACK
Front finisher - Blue
Side finisher - Blue

1 - Trunk liner reversible

2 - Led Interior Light Kit*

**The kit also includes bulbs in the cabin.*

3 - Trunk entry guard

4 - Mudguards Front & rear White Pearl
(9 colours available)

5 - Bumper upper protection

6 - Rear Mount Carrier* and TEK 13 Pins

**Not compatible with Spare Wheel option. The maximum vertical load capacity is 52.5kg.*

7 - Shark Antenna* (5 colours available)

**Available for MY20, MY21 and MY22 for Acenta grade. (Compatible with DAB, DAB+ and FM).*

8 - 17" Bold alloy wheel dark grey diamond cut with blue strip + lockable wheel nuts

9 - Aluminium loadcarrier

The maximum load capacity of the roof is 35 kg. The bars of load carrier weigh 6 kg. Max 29 kg load allowed on the load carrier.

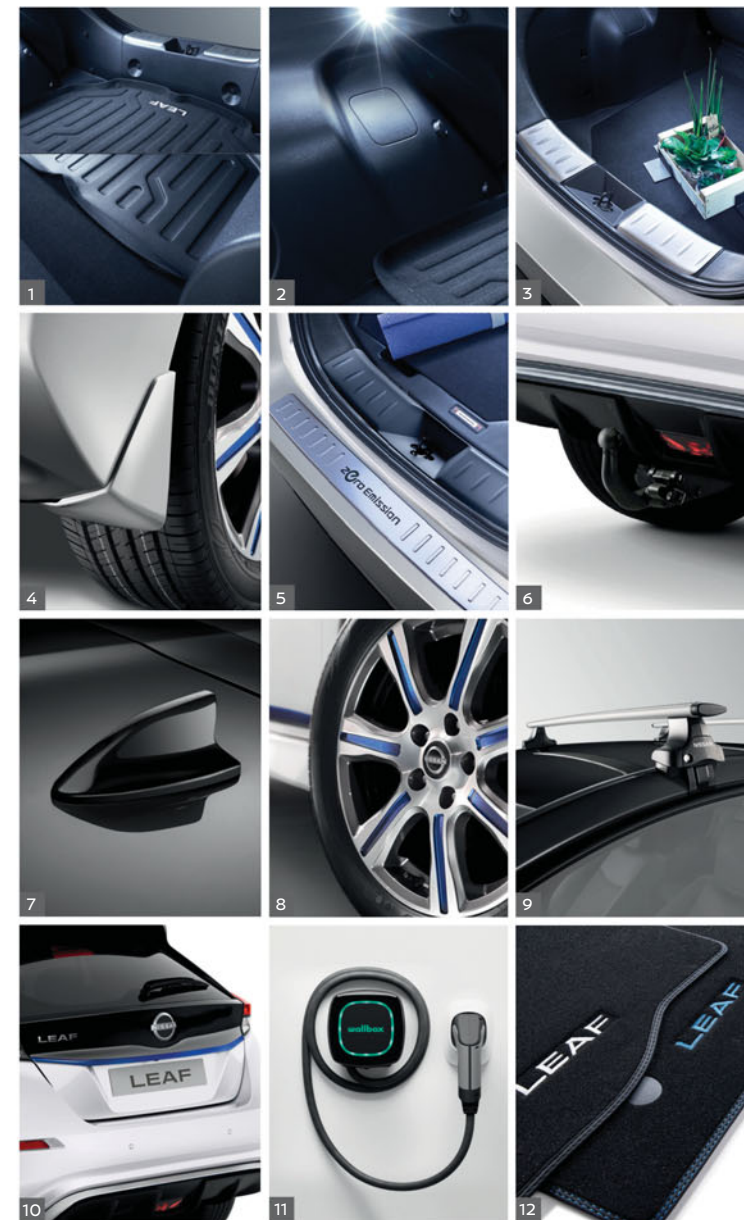
10 - Trunk lower finisher Blue

11 - Home AC Charger

12 - Mats



Blast ahead
LEAF accessories with style



AT NISSAN,
WE FOCUS
ON QUALITY.



MASTERED THROUGH EXPERIENCE

At Nissan, we do everything with the customer in mind. Every action and decision we make, is made with the utmost care, precision and quality because ultimately, it's for you. From conception to car construction, from testing to transparency, from customer service to commitment. Quality is in every fine detail.



360° PROCESS

We build in quality from the outset, meticulously conceiving each car to make them more comfortable and more durable through innovative design, intelligent technology and thoughtful details inspired by you.



SAFETY

We work with our intelligent driving systems to constantly look out for you and help you avoid any mishaps for a bolder, more confident driving experience day after day. Our Intelligent Around View Monitor uses 4 cameras to give you a virtual birds eye view of your car in its surroundings.



EXTREME RELIABILITY

We push our cars to the limit to guarantee their daily performance and reliability. We travel millions of kilometres in pre-production tests, open and close doors and bonnets thousands of times a day and use real volcanic dust from Japan to test window resistance.





OUR PROMISE. YOUR EXPERIENCE

WE WANT YOU TO BE COMPLETELY SATISFIED WITH THE ON-GOING QUALITY AND PERFORMANCE OF YOUR VEHICLE. YOU'RE THE FOCUS OF ALL WE DO, AND WE'RE COMMITTED TO STRIVING FOR THE HIGHEST LEVELS OF SERVICE AND AFTERCARE YOU CAN FIND **THAT IS OUR PROMISE.**

AS A CUSTOMER, WE PROMISE TO OFFER YOU [1]: FREE MOBILITY SOLUTION

You want to say mobile when your Nissan is in for a service or repair. Nissan promise to keep you mobile free of charge [2] whether you need a courtesy car, or just a lift.



FREE VEHICLE HEALTH CHECK

You want to understand what is going on with your car's service. Nissan promise a free vehicle health check and we can even show you any work that might need doing in your own vehicle assessment video.

SERVICE PRICE MATCH

You want the best value for money when it comes to service and repair. Nissan promise simple Fixed Price Servicing and will price match like-for-like competitor quotes, within 10 miles of you local dealer.



CONTINUOUS NISSAN ASSISTANCE

You want the peace of mind you get from our quality servicing to go even further. Nissan promise to give you continuous Roadside Assistance for free[3].

[1] Visit nissan.co.uk/ownership/customerpromise for details or to find out more

[2] Subject to an excess of £250 (£500 for young drivers). Further T&Cs apply, visit www.nissan.co.uk/content/dam/Nissan/gb/vehicles/customer-promise.pdf

[3] Roadside assistance is free for the first three years from the date of first registration for a new car, and for one year following each service completed at a Nissan Authorised Repairer. Please visit nissan.co.uk/ownership/nissan-services/nissan-car-assistance to find out more.

ANYWHERE, ANYTIME, ANYTHING. JUST CALL 0330 123 1231 AND WE'LL BE RIGHT THERE.

SERVICE PLANS

The Nissan Service Plan is a scheduled maintenance service covering all mandatory routine technical operations and vehicle checks. Relax knowing your car will be serviced by Nissan trained technicians using only genuine and quality approved parts.

EXTENDED WARRANTY

Why not relax and enjoy the ride for a bit longer knowing you can get things fixed when you need to? At Nissan, we let you extend your warranty for a longer period of time. To do this contact your preferred Nissan dealer before your current warranty expires. You can even extend your warranty if your original warranty has expired. Again, you'll need to get in touch with a Nissan dealer, this time to get your car or van examined before the purchase is completed. Your vehicle also needs to be less than 10 years old and have covered no more than 100,000 miles. Available at participating dealers only.



NISSAN LEAF OFFERS YOU:

5-YEAR/60,000 MILES WARRANTY FOR POWERTRAIN AND ELECTRIC VEHICLE SYSTEMS

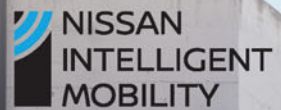
3-YEAR/60,000 MILES FOR STANDARD COMPONENTS WARRANTY

18,000 MILE SERVICE INTERVAL

NISSAN LEAF LITHIUM-ION BATTERY WARRANTY ALSO PROTECTS AGAINST CAPACITY LOSS BELOW 9 BARS OF CAPACITY (OUT OF 12) AS SHOWN ON THE LEAF'S CAPACITY GAUGE.

AT NISSAN, YOU BRING OUT THE BEST IN US.

You spark our imagination. You provoke our ingenuity. You inspire us to change the rules and innovate. And at Nissan, innovation is not just about additions and extensions; it's about crossing the line to reinvent the status quo. It's about developing unexpected solutions to satisfy your wildest and most pragmatic desires. At Nissan, we design cars, accessories and services that break the mould - making the practical exciting and the exciting practical to offer you a more exhilarating driving experience everyday.



Nissan Intelligent Mobility moves you one step ahead. In cars that feel like an extension of you, helping you to both see more and sense more. Nissan Intelligent Mobility is about a better future – moving us to a world that's safer, more sustainable, and exciting.

Deep dive in Leaf experience: www.nissan.co.uk/LEAF

Follow Nissan Leaf on Facebook, Twitter and Youtube.

Every effort has been made to ensure that the content of this publication is correct at the time of going to press (July 2023). This brochure has been produced featuring prototype vehicles exhibited at motor shows. In accordance with the company's policy of continuously improving its products, Nissan GB reserves the right to change at any time the specification and the vehicles described and shown in this publication. Nissan dealers will be informed of any such modifications as quickly as possible. Please check with your local Nissan dealer to receive the most up-to-date information. Because of the limitations of the printing processes used, the colours shown in this brochure may differ slightly from the actual colours of the paint and interior trim materials used. All rights reserved. Reproduction in whole or part of this brochure without the written permission of Nissan Europe is forbidden. Created by DESIGNORY, France and produced by eg+ worldwide, France – Tel: +33 1 49 09 25 35



LEAF



STANDARD EQUIPMENT

NISSAN LEAF STANDARD SPECIFICATION:

EXTERIOR:

- LED signature daytime running lights
- LED signature tail lights
- Body coloured door mirrors with integrated LED indicators
- Chrome door handles
- Illuminated charging port

INTERIOR:

- Height adjustable driver seat
- 60:40 split folding rear seats
- Front centre console and armrest
- D-shaped leather steering wheel
- Remote audio control

COMFORT & CONVENIENCE:

- Nissan i-Key
- Start push button
- Air conditioning
- Intelligent Auto headlights with follow me-home functionality & auto hazard lights
- High Beam Assist
- Telescopic steering wheel

- Auto-wipers

- Intelligent Cruise Control
- Speed limiter
- Front and rear electric windows
- Front and rear USB ports

AUDIO & TECHNOLOGY:

- 7" TFT screen combimeter
- 8" touchscreen entertainment system
- AM/FM/DAB audio system
- e-Pedal (with regenerative function)
- Android™ Auto and Apple™ CarPlay

SAFETY:

- ABS with EBD and Brake Assist
- Hill Start Assist
- Driver, passenger, side and curtain airbags
- ISOFIX child seat anchorage points (rear)
- Intelligent Trace Control
- Intelligent Emergency Braking with Pedestrian Recognition
- Lane Departure Warning
- Intelligent Lane Intervention
- Rear Cross Traffic Alert
- Blind Spot Warning
- Thatcham alarm system

OPTIONAL EXTRAS

- Metallic paint
- Pearlescent paint
- 3 pin EVSE 6m charging cable

ACENTA

IN ADDITION TO STANDARD EQUIPMENT

EXTERIOR:

- 16" black alloy wheels
- Front fog lights

AUDIO & TECHNOLOGY:

- 6 speakers
- Rear view camera

CHARGING:

- 39kWh usable battery capacity
- 50kW CHAdeMO rapid charging capability
- 6.6kW on-board charger
- Mode 3 Type 2 6m charging cable

OPTIONAL EXTRAS

- Spare Wheel
- Tech Pack: Intelligent Around View Monitor, Moving Object Detection, Intelligent Driver Alert, front and rear parking sensors
- Heat Pack: Heated front seats with heated steering wheel
- 3 pin EVSE 6m charging cable



N-CONNECTA

IN ADDITION TO ACENTA

EXTERIOR:

- 17" black alloy wheels
- Rear privacy glass
- Electric folding door mirrors
- Gloss black B-pillar

INTERIOR:

- Gloss Black interior trim
- Heat Pack: Heated front and rear seats with heated steering wheel

COMFORT & CONVENIENCE:

- Anti dazzle rear view mirror
- Automatic climate control (remote heating and cooling)
- NissanConnect Navigation and Entertainment System with NissanConnect Services app integration
- Heat pump

AUDIO & TECHNOLOGY:

- Tech Pack: Intelligent Around View Monitor, Moving Object Detection, Intelligent Driver Alert, front and rear parking sensors

OPTIONAL EXTRAS

- LED Pack: Full LED headlights and LED foglights with cornering function
- Spare Wheel
- ProPILOT Pack: Traffic Jam Pilot, Lane Keep Assist, Electronic Parking Brake
- Two-tone paint
- Intelligent rear view mirror
- 3 pin EVSE 6m charging cable



SHIRO

IN ADDITION TO N-CONNECTA

EXTERIOR:

- Arctic White Special Solid Paint

INTERIOR:

- Part Synthetic Leather / Part Cloth Seats

TECHNOLOGY:

- Standard ProPILOT Pack

OPTIONAL EXTRAS

- Spare Wheel Pack
- 3-pin EVSE 6m Charging Cable
- Two-Tone Storm White & Pearl Black roof



TEKNA

IN ADDITION TO N-CONNECTA

EXTERIOR:

- LED Pack: Full LED headlights and LED foglights with cornering function

INTERIOR:

- Black part leather, part synthetic leather trim, with Ultrasuede inserts
- Front and rear heated seats with heated steering wheel

AUDIO & TECHNOLOGY:

- Bose premium audio system with 7 speakers
- ProPILOT: Traffic Jam Pilot, Lane Keep Assist, Electronic Parking Brake

OPTIONAL EXTRAS

- Spare Wheel
- ProPILOT Park
- Two-tone paint
- Intelligent rear view mirror
- 3 pin EVSE 6m charging cable



COLOURS



FLAME RED (Z10)
SOLID



GUN METALLIC (KAD)
METALLIC



PEARL BLACK (Z11)
METALLIC



STORM WHITE (QAB)
PEARLESCENT



PEARL BLUE (RCJ)
PEARLESCENT



MAGNETIC RED (XDS)
AVAILABLE **ONLY** WITH
TWO-TONE PEARL BLACK ROOF
METALLIC



BLADE SILVER (XDR)
AVAILABLE **ONLY** WITH
TWO-TONE PEARL BLACK ROOF
METALLIC



MAGNETIC BLUE (XFV)
AVAILABLE **ONLY** WITH
TWO-TONE PEARL BLACK ROOF
PEARLESCENT



STORM WHITE (XDF)
AVAILABLE WITH TWO-TONE PEARL
BLACK ROOF
PEARLESCENT



CERAMIC GREY (XFU)
AVAILABLE **ONLY** WITH
TWO-TONE PEARL BLACK ROOF
PEARLESCENT

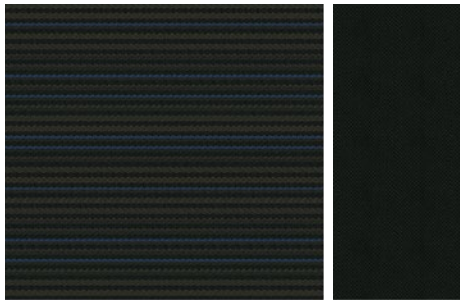


ARCTIC WHITE SPECIAL
SOLID PAINT (326)
AVAILABLE **ONLY** ON
SHIRO SPECIAL EDITION

Two-Tone Paint colour options available
from N-Connecta grade.

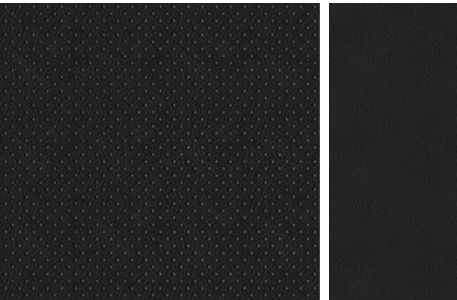
TRIMS

ACENTA / N-CONNECTA



Black woven fabric

TEKNA



Black part leather, part synthetic leather trim, with Ultrasuede inserts

SHIRO



Black woven fabric, part synthetic leather trim with black woven fabric

WHEELS

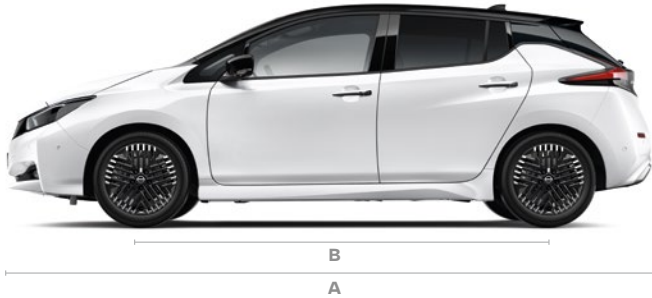


ACENTA 16" BLACK ALLOY WHEEL



N-CONNECTA, SHIRO, TEKNA
17" BLACK ALLOY WHEEL

DIMENSIONS



A: Overall length: 4,490mm

B: Wheelbase: 2,700mm

C: Overall width: 2,030mm

D: Overall height: 1,540mm



WARRANTY

Nissan LEAF offers you:

- 5 years / 60,000 miles warranty on all EV dedicated components and 3 years / 60,000 miles for standard components
- 12 Year anti-corrosion warranty
- 18,000 miles service interval

Nissan LEAF Lithium-Ion battery warranty also protects against capacity loss below 9 bars of capacity (out of 12) as shown on the LEAF's capacity gauge. For a period of 8 years / 100,000 miles

LEAF TECHNICAL DATA

| | | ACENTA | | N-CONNECTA | | SHIRO | | TEKNA | |
|---|--------|--|--|-------------------------|--|-------------------------|--|-------------------------|--|
| MODEL | | | | | | | | | |
| Engine type | | Electric Motor | | | | | | | |
| Drivetrain | | 2WD | | | | | | | |
| Seating capacity | | 5 | | | | | | | |
| Overall Length | mm | 4490 | | | | | | | |
| Overall Width without mirrors | mm | 1788 | | | | | | | |
| Overall Width with mirrors | mm | 2030 | | | | | | | |
| Overall Height (unladen) | mm | 1530 | | 1540 | | | | | |
| Kerb Weight min / max | kg | 1518 - 1559 | | 1540 - 1594 | | 1540 - 1594 | | 1541 - 1567 | |
| Gross Vehicle Weight | kg | 1995 | | | | | | | |
| Maximum payload | kg | 450 | | | | | | | |
| Maximum roof load | kg | 35 | | | | | | | |
| Wheelbase | mm | 2700 | | | | | | | |
| Overhang, front/rear | mm | 1005 / 785 | | | | | | | |
| Track front | mm | 1540 / 1530 | | | | | | | |
| Track rear | mm | 1555 / 1545 | | | | | | | |
| Turning circle, kerb to kerb | m | 10.8 | | | | | | | |
| Luggage capacity (without parcel shelf) | litres | 435 | | 435 | | 435 | | 426 | |
| Luggage capacity (with parcel shelf) | litres | 394 | | 394 | | 394 | | 385 | |
| Luggage/Trunk capacity with folded seats VDA (up to roof) | litres | 1176 | | 1176 | | 1176 | | 1167 | |
| Luggage space, max length | mm | 790 | | | | | | | |
| Luggage space, max width | mm | 1103 | | | | | | | |
| Minimum ground clearance | mm | 150 | | 157 | | 157 | | 157 | |
| CHASSIS | | | | | | | | | |
| Driven wheels | | Front Wheel Drive | | | | | | | |
| Transmission | | Automatic | | | | | | | |
| Suspension, front | | MacPherson strut | | | | | | | |
| Suspension, rear | | Twist beam axle | | | | | | | |
| Steering | | Electric power assisted | | | | | | | |
| Brakes, front | | Vented discs with Twin-piston sliding caliper | | | | | | | |
| Brakes, rear | | Vented discs with single-piston floating caliper | | | | | | | |
| Battery type | | Laminated lithium ion | | | | | | | |
| Voltage | V | 350 | | 350 | | 350 | | 350 | |
| Battery capacity (usable) | kWh | 39 | | 39 | | 39 | | 39 | |
| Tyre size | | 205/55R16 91V | | 215/50R17 91V | | 215/50R17 91V | | 215/50R17 91V | |
| Wheel size | | 6.5 J x 16 16" Alloy | | 6.5 J x 17 17" Alloy | | 6.5 J x 17 17" Alloy | | 6.5 J x 17 17" Alloy | |

| | | ACENTA | N-CONNECTA | SHIRO | TEKNA |
|-------------------------|---------------------------|--------------------------------|------------|-------|-------|
| PERFORMANCE | | | | | |
| Acceleration | 0 - 62mph (0 - 100kph) | 7.9 | 7.9 | 7.9 | 7.9 |
| Max. speed | mph | 90 | 90 | 90 | 90 |
| Electricity consumption | Wh/km | 171 | 171 | 171 | 171 |
| Range (WLTP) combined | miles | 168 | 168 | 168 | 168 |
| Range (WLTP) City | miles | 242 | 242 | 242 | 242 |
| Max. engine power | Kw/PS/ min-1 | 110kW / 150PS / 3283 - 9795rpm | | | |
| Max. torque | Nm/ min-1 | 320Nm / 0 - 3283rpm | | | |

| CHARGING | | | | | |
|-----------------------------------|-----------------------|--------------------|-----|-----|-----|
| On-board charger | kW | 6.6 | 6.6 | 6.6 | 6.6 |
| Rapid charger capability | kW | 50 | | | |
| Charging Cable | m | Mode 3 (6m) | | | |
| 6.6kW OBC on 32A Wallbox | Empty warning to 100% | 7h30 | | | |
| 10A EVSE cable on domestic socket | Empty warning to 100% | 21h | | | |
| 50kW Rapid Charger | 20% to 80% | Around 60 minutes* | | | |

*Time dependent on charging conditions, including charger type and condition, battery temperature as well as ambient temperature at point of use. Indicated rapid charging time requires use of a CHAdemo rapid charger. The Nissan LEAF is designed to support the majority of journeys in daily life and is equipped with charging safeguards to protect the battery during repeated rapid charging sessions in a short period of time. The time taken for successive rapid charging can take longer if the battery temperature activates the battery safeguarding technology.

PRICE LIST

| GRADE | BATTERY | BASIC £ | VAT £ | TOTAL RETAIL £ | ON THE ROAD £ |
|------------|---------|-----------|----------|----------------|---------------|
| Acenta | 39kWh | 24,116.67 | 4,823.33 | 28,940.00 | 28,995.00 |
| N-Connecta | 39kWh | 25,366.67 | 5,073.33 | 30,440.00 | 30,495.00 |
| Shiro | 39kWh | 23,700.00 | 4,740.00 | 28,440.00 | 28,495.00 |
| Tekna | 39kWh | 26,616.67 | 5,323.33 | 31,940.00 | 31,995.00 |

| GRADE | COMPANY CAR TAX DRIVERS^ | | | | | |
|------------|--------------------------|---------------|-------|---------------------|---------------------|---------------------|
| | BATTERY | P11D VALUE* £ | BIK % | MONTHLY£ BIK AT 20% | MONTHLY£ BIK AT 40% | MONTHLY£ BIK AT 45% |
| Acenta | 39kWh | 28,940.00 | 2% | 9.65 | 19.29 | 21.71 |
| N-Connecta | 39kWh | 30,440.00 | 2% | 10.15 | 20.29 | 22.83 |
| Tekna | 39kWh | 31,940.00 | 2% | 10.65 | 21.29 | 23.96 |

^Representative examples only - subject to change. Please seek independent tax advice. *P11D value measured by Total Retail, not OTR.

PRICE LIST

| | ACENTA | N-CONNECTA | SHIRO | TEKNA | BASIC | VAT | TOTAL RETAIL |
|---|--------|------------|-------|-------|--------|--------|--------------|
| Solid Paint (Flame Red) | ○ | ○ | - | ○ | 0 | 0 | 0 |
| Arctic White | - | - | ● | - | 0 | 0 | 0 |
| Metallic Paint | ○ | ○ | - | ○ | 479.17 | 95.83 | 575.00 |
| Pearlescent Paint | ○ | ○ | ○* | ○ | 620.83 | 124.17 | 745.00 |
| Two Tone Paint (Surcharge to be added to paint cost) | - | ○ | ○* | ○ | 291.67 | 58.33 | 350.00 |
| Spare Wheel | ○ | ○ | ○ | ○ | 162.50 | 32.50 | 195.00 |
| Heat Pack: Heated front seats with heated steering wheel | ○ | ● | ● | ● | 245.83 | 49.17 | 295.00 |
| Tech Pack: Intelligent Around View Monitor, Intelligent Driver Alert, Moving Object Detection, front and rear parking sensors | ○ | ● | ● | ● | 375.00 | 75.00 | 450.00 |
| LED Pack: Full LED headlights and LED foglights with cornering function | - | ○ | - | ● | 412.50 | 82.50 | 495.00 |
| ProPILOT Pack: Traffic Jam Pilot, Lane Keep Assist and Electronic Parking Brake | - | ○ | ● | ● | 375.00 | 75.00 | 450.00 |
| ProPILOT Park | - | - | - | ○ | 662.50 | 132.50 | 795.00 |
| Intelligent Rear View Mirror | - | ○ | - | ○ | 329.17 | 65.83 | 395.00 |
| 3 pin EVSE 6m Charging Cable | ○ | ○ | ○ | ○ | 245.83 | 49.17 | 295.00 |

Optional - ○ Standard - ● *Shiro is available only with Storm White Pearlescent with Two Tone Black Roof



OUR PROMISE. YOUR EXPERIENCE.



When you purchase a LEAF from us, we'll look after you - for as long as you own it. **That is our Promise.**



BATTERY QUALITY GUARANTEE

YOU want the reassurance of a functional battery.

NISSAN PROMISE to replace any part of the battery causing capacity loss of below 9 bars (out of 12) within your LEAF's warranty period.



CONTINUOUS EV ROADSIDE ASSISTANCE

YOU want the peace of mind you get from our quality service to go even further.

NISSAN PROMISE to provide you with EV Roadside Assistance for free every time you service your car with us.



HERE FOR YOU

YOU want your problems resolved quickly.

NISSAN PROMISE to propose a resolution to any problem within two working days.

Just call 0330 123 1231.

Please visit nissan.co.uk/ownership. Terms and conditions apply.

YOU+ NISSAN

YOU+NISSAN
OUR PROMISE. YOUR EXPERIENCE.



Nissan. Innovation that excites.

visit our website at: www.nissan.co.uk

Dealer stamp:

Follow Nissan LEAF on:



Every effort has been made to ensure that the content of this publication is correct at the time of going to press (July 2023). This brochure has been produced featuring prototype vehicles exhibited at motor shows, in accordance with the company's policy of continuously improving its products. Nissan International reserves the right to change at any time the specification and the vehicles described and shown in this publication. Nissan dealers will be informed of any such modifications as quickly as possible. Please check with your local Nissan dealer to receive the most up-to-date information. Because of the limitations of the printing processes used, the colours shown in this brochure may differ slightly from the actual colours of the paint and interior trim materials used. All rights reserved. Reproduction in whole or part of this brochure without the written permission of Nissan International is forbidden.

Part Number: 99999-54458. Printed in the UK