

The new Kia EV6 GT



Movement that inspires

Movement that inspires.

Open a world of possibilities.

We believe in movement that inspires. Design that makes a statement. Technology that changes the game. The new EV6 GT is powered for pure pleasure. In every respect, on every drive Sport-infused design details. Superb all-electric GT performance. Refined, high-tech comfort throughout. All elevated for electrified driving that is as effortless as it is enjoyable.



Design

Dynamic in every respect.



Exterior Design

Boldly charged front styling.

The wide stance, stand-out Daytime Running Lights and GT-infused front bumper culminate in a dynamic aesthetic.



Sport-infused rear refinement.

Undeniably bold body contours are complemented by an eye-catching rear light signature and a sporty GT diffuser.

Exterior Design

Performance-enhancing details

The adjusted rear spoiler geometry, reduced tyre exposure and fully covered underbody help reduce wind and road noise



Stand-out wheel design.

Featuring neon green brake calipers, the 21" alloy wheels add yet more visual impact with their support-inspired design.

Interior Design

Power Bucket Seats.

Dedicated first-row Power Bucket Seats offer electric settings that include heating, ventilation, tilting, sliding and reclining.



Sport-infused touches.

The GT cabin inspires with sleek details like neon highlights to complement the sustainable, recycled suede upholstery.

Interior Design

Dedicated GT steering wheel.

Featuring an GT Drive mode button especially designed to unleash 100% of the all-electric power of up to 641 HP*.

*641 HP can be reached during launch control.



Fingerprint recognition.

Kia's biometric recognition technology lets you connect to your user profile, start your EV6 GT, or de-activate valet mode.

Charging & Range

Powered for pure enjoyment.



Go further. Do more.

Ultra fast charging.

Enjoy ultra-fast charging from 10% to 80% in 18 minutes. The high-voltage 84.0 kWh battery pack delivers a longer range of up to 279 miles.

Kia Plug&Charge.

Start a charge automatically by pulling up to a Plug & Charge supported charging station and plugging in. Authentication between the car and charger is automatic allowing for a seamless charging experience.



Safety

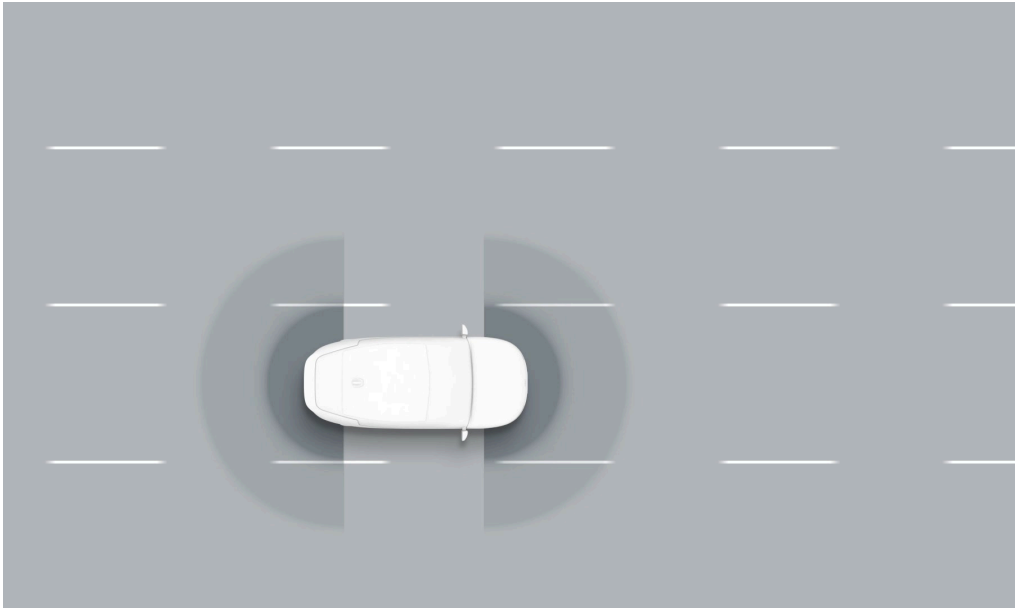


Intuitive safety features.

The EV6 GT is equipped with advanced driver assistance systems to keep you safe. While meeting the latest standards, ensuring maximum safety at all times. They include anti-collision assistants that detect collision risks before they occur, and highway assistants to safeguard you when driving on motorways. As well as parking assistants that make light work of parking.

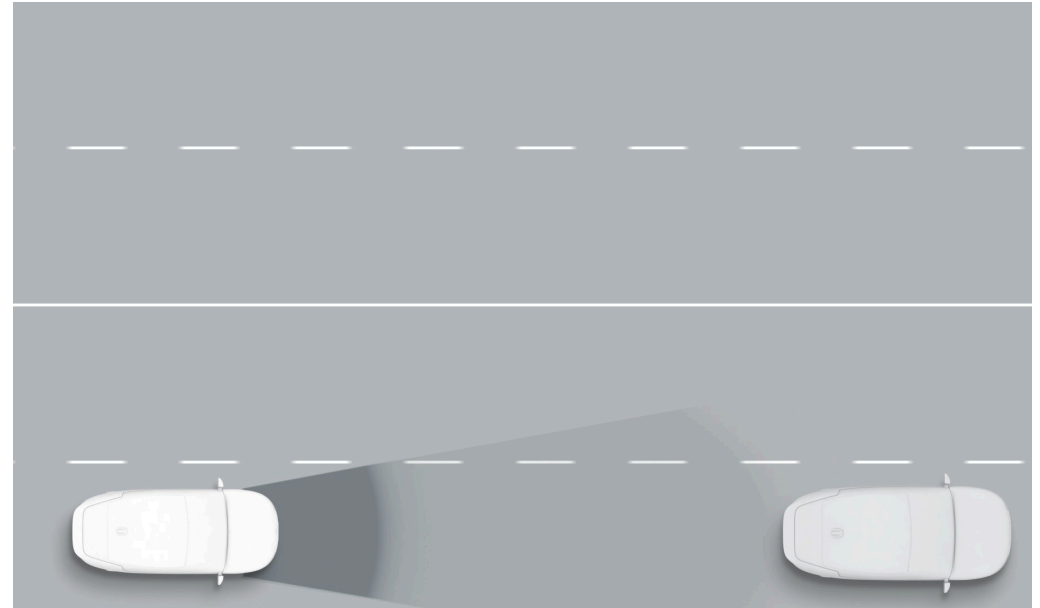


Technologies for safety and convenience.



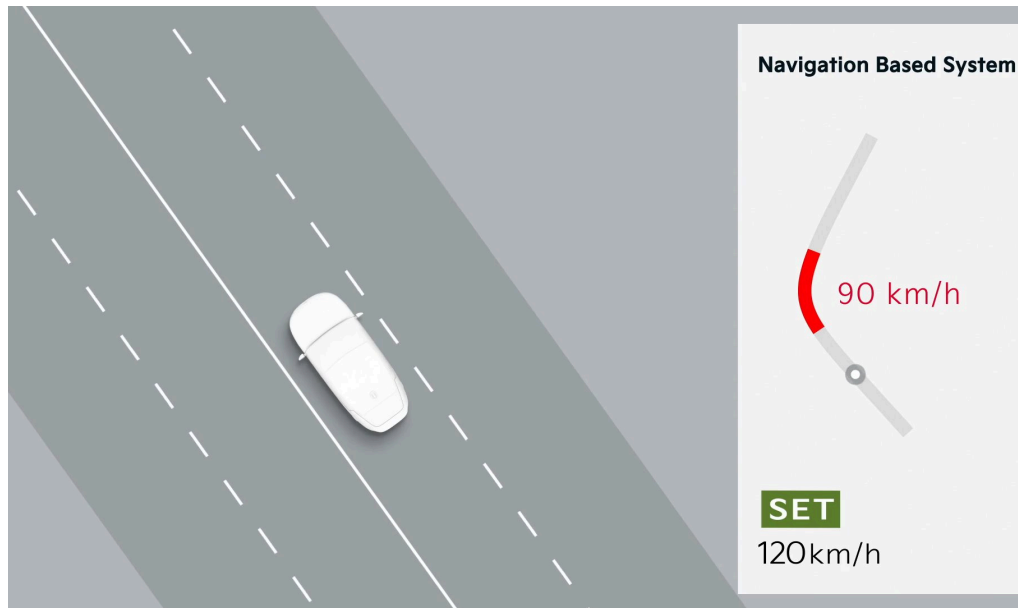
Blind-spot Collision Avoidance Assist (BCA)

BCA warns you if there is a risk of collision with a rear side vehicle in the blind-spot while changing lanes.



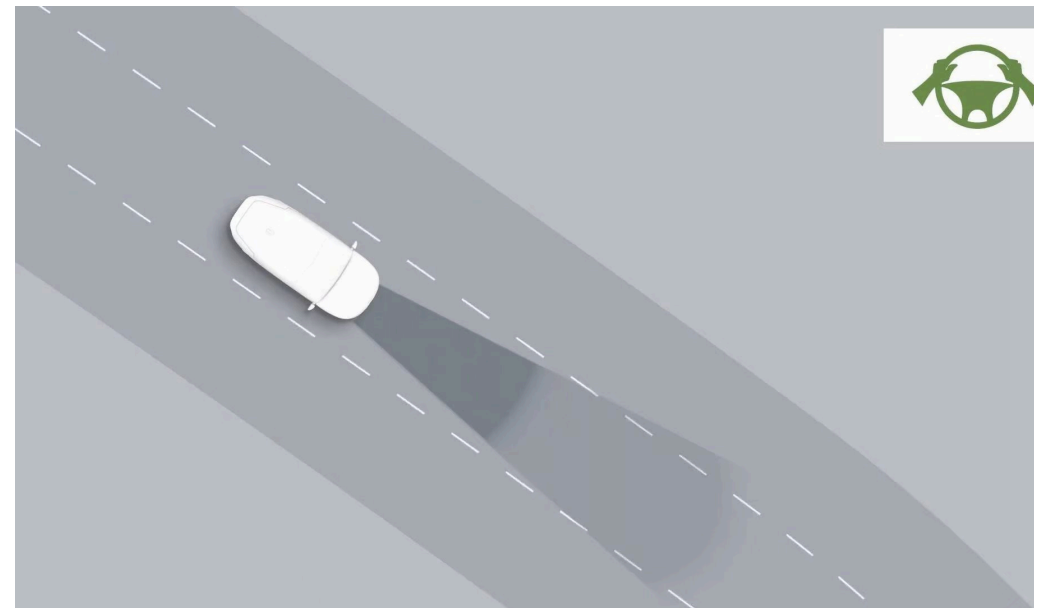
Forward Collision-Avoidance Assist.

FCA 2.0 gives you added peace of mind and helps you to avoid any potential collisions with pedestrians, cyclists and other cars on the road. If you are not applying the brakes hard enough to avoid a collision, your EV6 GT will do it automatically.



Navigation-based Smart Cruise Control (NSCC).

This technology helps to maintain a safe speed according to road conditions while driving on a motorway. It automatically reduces speed in sections of highways with tight curves, in order to keep the driver and passenger safe.



Highway Driving Assist 2 (HDA 2) with Hands-On Detection

HDA 2 with HoD automatically adapts your target speed to meet the limit, while keeping you at a safe distance from the vehicles ahead. The upgraded hands-on detection sensors on the steering wheel detect whether you are touching it, even without movement.

Connectivity

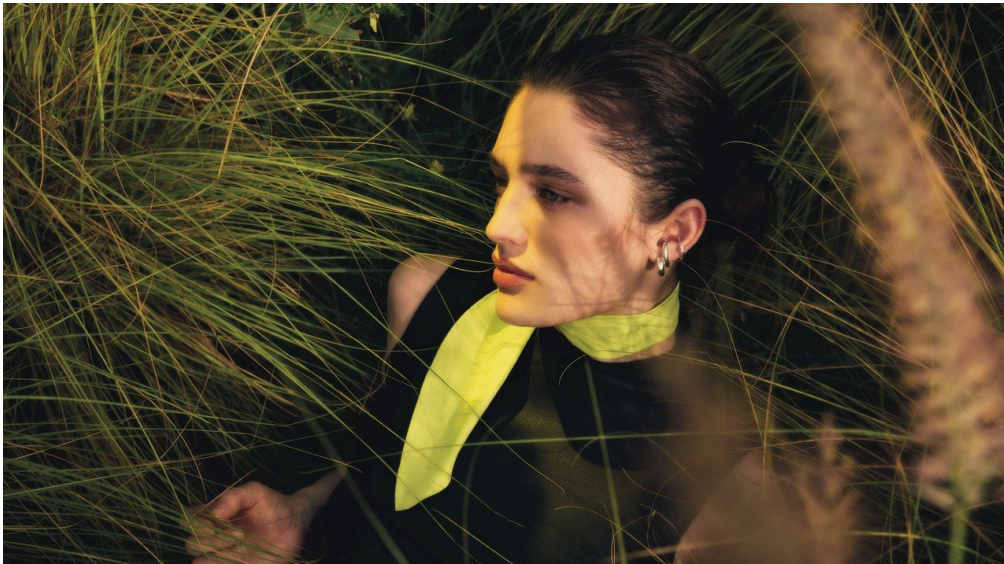
Stay connected, anytime and anywhere.



Connectivity

Connect at a touch.

The cutting-edge infotainment system makes driving less complicated and far more enjoyable. With dual-band GPS and an EV route planner, EV6 GT suggests the best charging points on your route.



Kia Connect.

Seamlessly connect your phone with your EV6 GT using the Kia Connect app and take advantage of all the additional convenience, peace of mind and practical support on offer.

Platform

Technology that moves you.



Platform

Technology

The EV6 GT is designed to take you further in every way. The Electric Global Modular Platform (E-GMP) provides a generous cabin with lounge-style comfort for everyone on board. It also brings you athletic performance and impressive range, with a stable, quiet driving experience even at high speeds.



Specification



Make it yours.

Colour Line-up.

[CONFIGURE NOW](#)



White Pearl



Midnight Black



Yacht Matt Blue



Runway Red



Wolf Grey

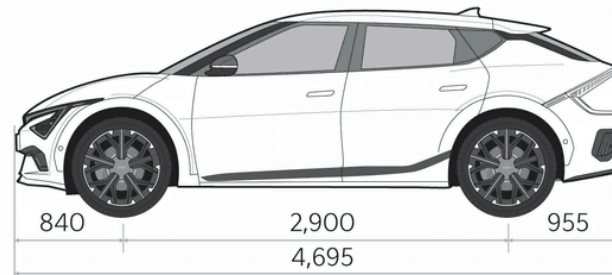
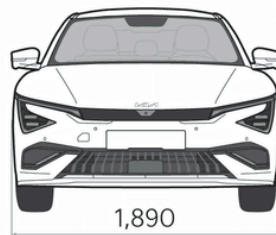
Wheels.



21" Alloy Wheel

[CONFIGURE NOW](#)

Dimension Sketch.



21" Alloy Wheel

Kia e-Care and Warranty



e-Care

S e r v i c e P l a n s

Kia e-Care is a bespoke service plan to keep your fully electric EV6 GT in top condition. Designed to give your car an annual check, including specific electric vehicle maintenance such as tyre rotation, brake cleaning and battery state of health reports as well as scheduled servicing. Our Kia trained technicians use genuine Kia parts, utilising Kia service tools and diagnostic equipment - so you can be confident that your Kia is in the best capable hands. Explore Kia e-Care to get a competitive fixed service price.

7-year vehicle warranty. Every Kia sold in the UK benefits from a 7-year /100,000 miles new car warranty (up to 3 years unlimited mileage; 100,000 miles limit from years 4 to 7) from the date of first registration. This warranty is free and fully transferable to subsequent owners. (Terms and exclusions apply, log onto www.kia.com/uk for full details)

Kia 7-year EV/HEV/PHEV Battery Warranty. When you switch to a Kia Electric (EV), Hybrid Electric (HEV) or Plug-in Hybrid (PHEV), it's good to know that our batteries are built to have a long life*. That's why at Kia we are happy to cover you for 8-years (7-years for HEV & PHEV) or 100,000 miles whichever comes first. For our low voltage 12V batteries and 48V batteries in Kia Mild-Hybrid electric vehicles (MHEVs), our warranty covers you for a period of 2-years from first registration regardless of mileage. All of which means you can simply enjoy the experience of driving our eco-friendly range, every day for years to come.* Kia high voltage lithium ion battery-units in electric vehicles..

Kia Electric (EV) and Plug-in Hybrid (PHEV) high voltage lithium ion battery minimum capacity cover. Kia warranty covers the repairs needed to ensure the battery capacity is always at least 70% of the original battery capacity throughout the warranty period

To minimise capacity reduction, follow the instructions consult the Owner's Manual. Find more information about Kia warranty at www.kia.com/uk

Want to Know More?





EV6 GT Experience.

[DISCOVER MORE](#)

EV6 GT Specifications.

[DISCOVER MORE](#)

Book a Test Drive.

[REGISTER NOW](#)

Kia App



Kia Connect... Your free seven-year connected services.

Kia Connect opens your Kia to the world of connected services. Once activated, it enables a number of essential digital features in your car. You can also install the Kia app on your smartphone and pair it with your Kia to control certain functions remotely and consult a wealth of information about your car.

In-car services

Your free seven-year Kia Connect, once activated, uses your vehicle's embedded SIM card to connect it to the world of live data.

Real-time traffic information

Your navigation system uses live traffic information to recommend the best route and dynamically predict the most accurate arrival time.

Speed cameras and danger zones

Be alerted to speed and traffic light cameras, and to areas where accidents are particularly common.

Weather information

With up to three days' weather forecast available, you can check weather conditions at your destination.

Points of interest

Are you looking for a place to eat, a local business or the nearest ATM? All this information and more is easily accessible via your Kia's live, connected directory.

Parking

Kia Connect helps you find available parking locations. It shows on- and off-street parking locations, including prices and likely availability.

Fuel station information

The system shows you the nearest petrol stations and prices to plan a refuelling stop.

Charging station information (electric and plug-in hybrid vehicles only) Your car gives you the location of charging stations, with useful information such as availability and charging speeds available.



Apple CarPlay™ is a smart, safe way to use your iPhone while driving. It takes all the things you might want to do, and puts them into your display, so you can get directions, make a call and listen to music all while staying focused on the road.



Android Auto™ is designed to keep you perfectly connected to your phone while minimizing distractions so you stay safe on the road. The simple, intuitive interface lets you access features like Google Maps, apps, music and voice control, and automatically organizes info into simple cards that appear just when they're needed.

Mobile application services

Once Kia Connect is activated in your Kia, it gives you access to a wide range of useful functionalities through the Kia App (available on Apple™ and Android™).

Find my car and first/last mile navigation

You can check the location of your car from your smartphone. Your app can also use augmented reality to guide you to your car. When driving and parking before reaching your exact destination, your app can give you guidance to walk the last bit of the way using augmented reality or Google Maps.

Vehicle status

The Kia app gives you an overview of your Kia's status including fuel/battery level, doors, windows, bonnet or tailgate. It lets you know if any of the vehicle's functions isn't working properly. You can also use the app to consult information about your past trips or to obtain a summary of key stats for your past month's driving.

Notifications and remote door control

You get warned if your vehicle's anti-theft alarm is triggered or if you left your doors unlocked. What's more, you can lock and unlock doors from your phone, wherever you are.

User-profile-linked vehicle settings

Select your preferred vehicle settings from your phone for a tailored experience once you get behind the wheel.

Valet mode

Activate the valet mode in your car and you can track its location and speed on the app. Ideal when you lend your vehicle to an airport's valet parking service.

Kia services are available free of charge for a period of 7 years commencing on the day the vehicle is sold to the first owner of the vehicle and may be subject to change during that period. You need a smartphone with iOS™ or Android™ operating system and your own data plan to operate the Kia mobile apps. Your Kia needs to be in a location with Vodafone signal to connect to these services.

For new vehicles sold from May 2021, Kia offers, per vehicle, two free-of-charge updates of the maps in the vehicle's navigation system and of the Head Unit software using the so-called "over-the-air" method ("OTA Updates"). Once the two free-of-charge OTA Updates have been consumed, you will be able to get updates of the maps in the vehicle's navigation system and of the Head Unit software only (i) by accessing the following web page <https://update.kia.com/EU/E1/Main> or (ii) at a dealership.



[Discover More](#)

Kia Promise

Our promise to you.



7 more reasons to join our Kia family

Now there are even more reasons to buy a stylish, technology packed Kia. Peace of mind comes as standard when you join the Kia family with the Kia Promise - 7 great owner benefits when you buy your Kia and register at MyKia.



There are a lot of things to consider when buying a new car. Compromising on reliability in the long term shouldn't be one of them. That's why Kia have redefined quality and offers a unique, industry-leading 7 year warranty that comes with peace of mind for at least 100,000 miles.



Our 24/7 Roadside Assistance package is designed for Kia owners in partnership with the RAC. All new cars have complimentary cover for 12 months from the first date of registration, giving you the highest level of cover provided by the RAC, including onward travel and European cover.



With every new or Approved Used Kia you can get driveaway insurance and a £250 Excess Return voucher free of charge. All Kia owners can use our Accident AfterCare service and with Kia Care Service Plans we offer great value fixed price servicing.



Online service booking offers convenience and flexibility 24/7. Offering quality and value at one of our Dealers nationwide. Kia trained technicians use the latest diagnostic equipment and technology. All of our Genuine Kia parts come with a 2 year warranty. Fully inclusive pricing at the click of a button.



At Kia we care about you as an individual and want to deliver service that fits your needs. When you visit one of our Dealers for a service your vehicle will benefit from a complimentary vehicle health check, a wash and vacuum and alternative transport if needed. We look forward to spending time getting to



Kia Charge gives you access to the majority of public charging infrastructure in the UK and across Europe. It lets you locate stations, plan journeys, charge and pay, all with one solution.

*For full terms, conditions and exclusions please visit kia.com/uk



Connectivity with Kia Connect & Over-the-Air Updates. Kia Connect is our range of connected services both in-car and through the Kia Connect mobile app. Over-the-Air Updates keep your infotainment system up to date using your Kia's mobile data connection.

FIND OUT MORE

Fully unlock these benefits
when you register at **MyKia**

Contact Details

Kia UK Limited, Walton Green, Walton-On-Thames, Surrey,
KT12 1FJ Freephone: 0333 2022990
www.kia.com/uk

All information and illustrations are based on data available at the time of publishing (June 2025) and are subject to change without notice.

Contact your local Kia dealer for current information and full warranty details including terms and conditions. Imagery shown throughout this brochure is for illustrative purposes only and not to UK specification. Features shown are not necessarily standard across the EV6 GT range.

