

N E X T - G E N E R A T I O N
E V E R E S T



Ford

#NextGenEverest

Yours to master

You wanted an SUV with uncompromising capability, safety and comfort. A complete SUV – tough on the outside, sanctuary on the inside, and ready for everything ahead of you and your family. You demanded it, we built it! Introducing the Next-Generation Ford Everest.



Platinum

Platinum brings an exclusive level of sophistication, luxury and intelligence to overlanding mastery. Built because we can, the Next-Gen Everest Platinum is king of the road.

Sport

Blacked-out grille, trim and wheels are matched with an athletic ebony interior, for a dominant signature effect. The Next-Gen Everest Sport is ready to take on your adventures.

Customers can be confident that they have the power and torque they need whether they're towing, going off-road, or just heading out on a family adventure.



3.0L V6 Turbo Diesel

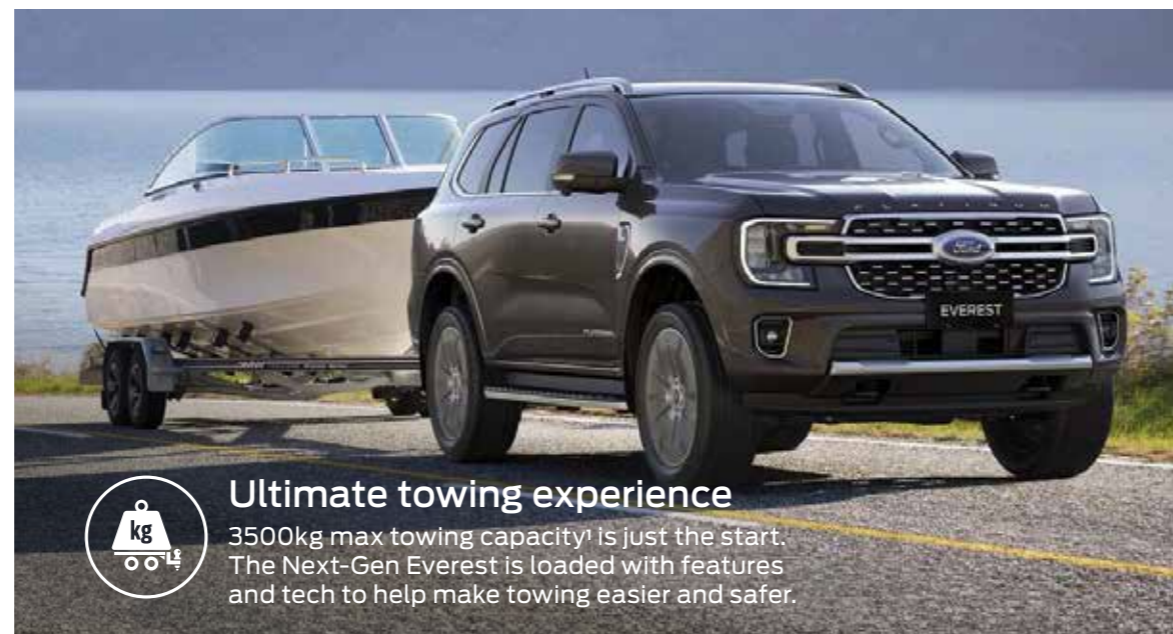
A powerful new 3.0L V6 Turbo Diesel engine headlines an exciting range of Diesel engines. Standard on Platinum models, the 3.0L V6 delivers 184kW of power and 600Nm of torque.

2.0L Bi-Turbo Diesel

The proven 2.0-litre Bi-Turbo diesel powertrain is backed by Ford's efficient 10-speed automatic transmission. Standard on Sport models. The Bi-Turbo offers 154kW of power & 500Nm of torque.

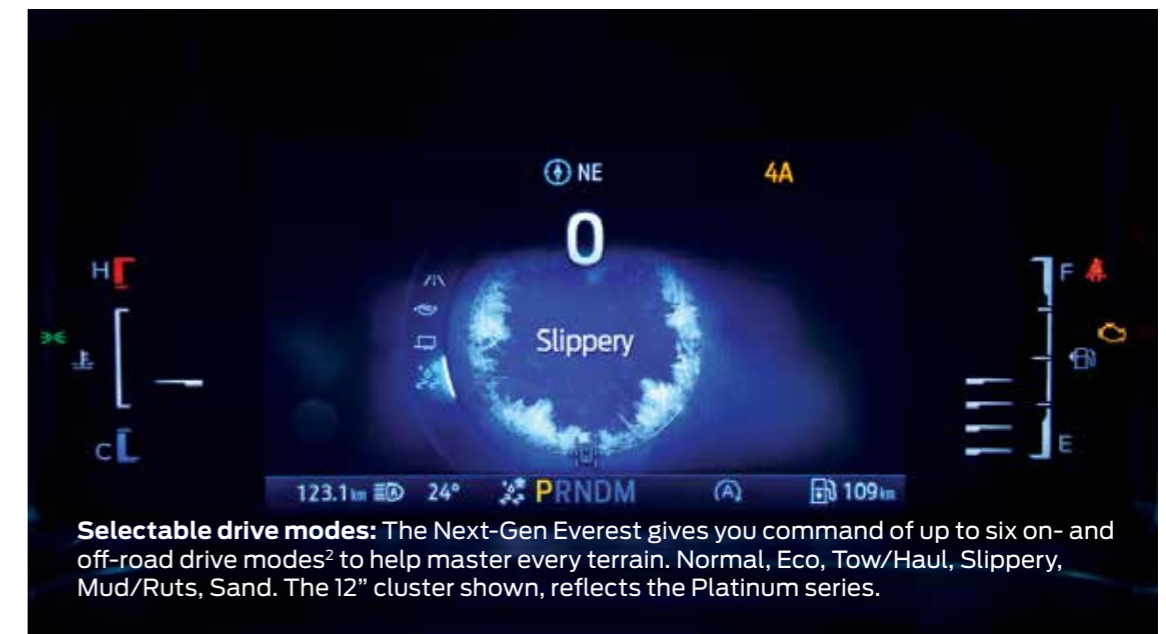
Next-Gen power & capability

The Next-Gen Everest features a choice of premium engines that deliver power and torque for towing, hauling and off-roading and come standard with Ford's efficient 10-speed automatic transmission.

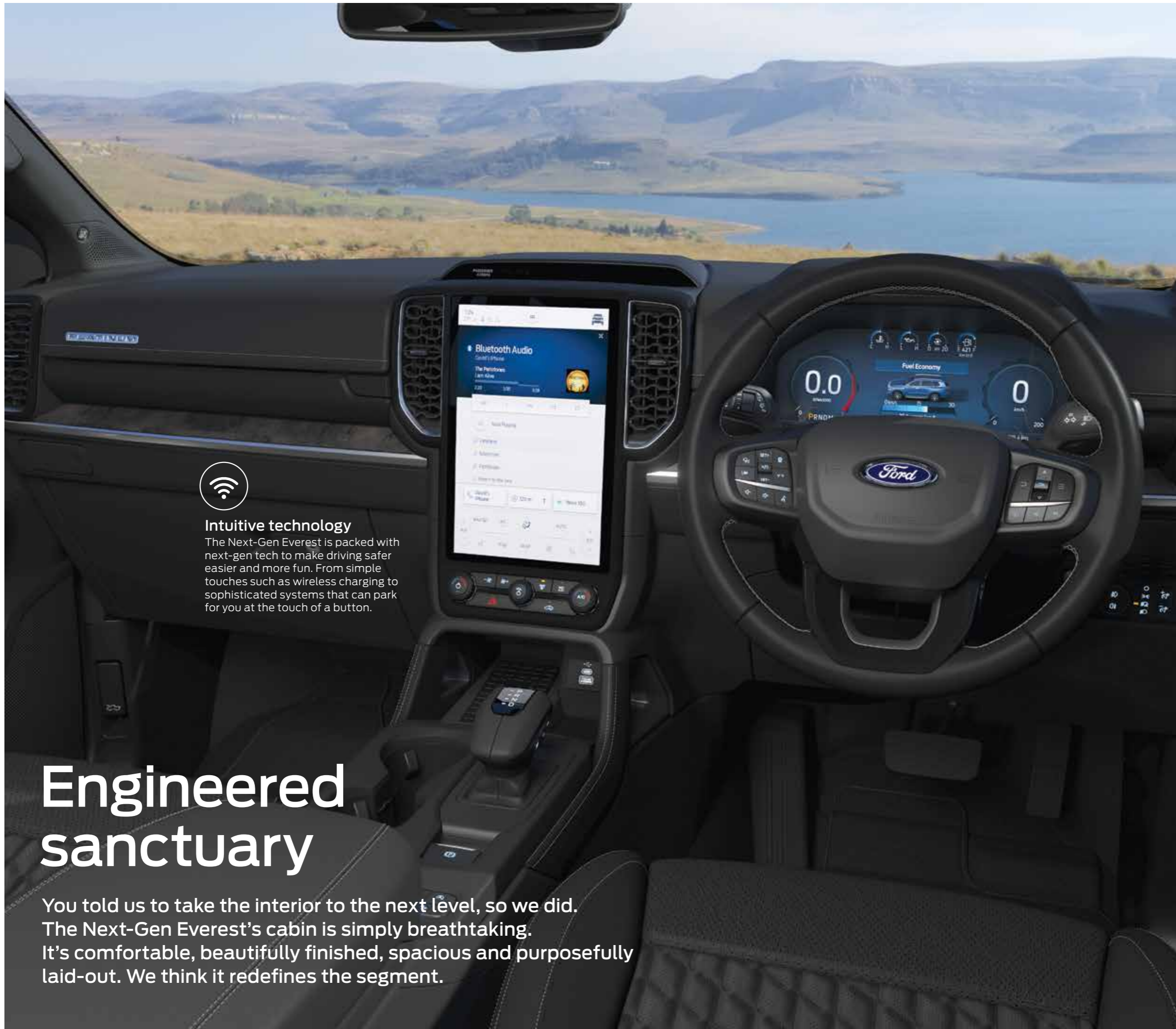


Ultimate towing experience

3500kg max towing capacity¹ is just the start. The Next-Gen Everest is loaded with features and tech to help make towing easier and safer.



Selectable drive modes: The Next-Gen Everest gives you command of up to six on- and off-road drive modes² to help master every terrain. Normal, Eco, Tow/Haul, Slippery, Mud/Ruts, Sand. The 12" cluster shown, reflects the Platinum series.



Intuitive technology

The Next-Gen Everest is packed with next-gen tech to make driving safer, easier and more fun. From simple touches such as wireless charging to sophisticated systems that can park for you at the touch of a button.

Engineered sanctuary

You told us to take the interior to the next level, so we did. The Next-Gen Everest's cabin is simply breathtaking. It's comfortable, beautifully finished, spacious and purposefully laid-out. We think it redefines the segment.



E-shifter

Premium High-tech Dash

New coast-to-coast instrument panel increases the sense of space and width in the cabin. The full digital instrument cluster and integrated 12-inch centre LCD touchscreen are surrounded by premium materials and finishes.



Off-Road capability with selectable drive modes



Flagship Interior

The elevated luxury interior features heated & vented leather seats with 10-way power and memory for the driver. Opulent finishes framed in satin chrome accents, provide warmth and elegance.



Off-Road camera



12" colour touch screen



360° camera (Platinum only)



On the Platinum model, a Panoramic Roof adds to the sense of openness and adventure.



Sport interior



Charging Ports & second row heated seat controls



Wireless Connection

Connect to Apple CarPlay™³ and Android Auto™³ without a cable in sight. This cordless connection makes life easy and uncluttered.

Connect anywhere

Every Next-Gen Everest comes fitted with an embedded modem known as FordPass⁶ Connect.

Using the FordPass App on your smartphone you can locate your vehicle, lock and unlock the doors, and even start the engine remotely.



Heat or cool cabin to last known setting



Receive Health Alerts like battery or oil levels.



Check your fuel levels remotely



Effortless interactivity

The Next-Gen Everest lets you experience a whole new world of connectivity, with wireless charging⁴ wireless connection and the cloud-based SYNC[®] 4A⁵ infotainment system.

SYNC[®] 4A⁵

A cloud-connected in-vehicle communication and entertainment system with a host of features, made easier by the system showing your last 5 actions, wireless smartphone integration, and a 12-inch touchscreen.

Wireless Charging Pad⁴

Avoid the hassle of having to plug in your phone. Simply place it on the Everest's wireless charging pad and you're good to go.



Wireless Charging Pad

Safety & Driver Assistance



Active Park Assist 2.0⁷

For times when you don't want to do it yourself, by simply holding down Platinum's Park Aid button, The Next-Gen Everest can help steer the vehicle into position.



Blind Spot Monitoring with Cross Traffic Alert & Trailer Coverage⁸

The Next-Gen Everest takes blind-spot-detection to the next level. BLIS[®] (Blind Spot Information System) with Trailer Coverage⁹ can alert you if a vehicle is detected in your Next-Gen Everest's or trailer's blind spot. It's added peace of mind and makes for safer and less stressful driving.



The Next-Gen Everest Evasive Steer Assist⁹

If Pre-collision Assist determines the distance is too short to brake in time to avoid a collision, your Next-Gen Everest will provide steering support (without steering for you) to help you avoid the obstacle.

**Applicable to Platinum only.*



The Next-Gen Everest with 6 Airbags

Includes front driver and passenger, dual seat side thorax airbags and dual side curtain airbags which cover all three rows.

Enough space for the biggest life

Everyone should be comfortable, no matter where they sit. The Next-Gen Everest is more spacious than ever, with more room and enough storage for every passenger.



Platinum interior shown

The Next-Gen Everest Third Row Seating

The Next-Gen Everest's third row is wider, with more leg room, improved seats and easier access. Overhead vents keep the air circulating and the rear passengers cool and comfortable. The cabin is quieter, so conversation can flow easily. Of course, side curtain airbags are standard.

The Next-Gen Everest power liftgate

The Next-Gen Everest's liftgate is wider for easier loading, opens and closes faster, and is designed to fully operate even with a conventional trailer attached.



Next-Gen ownership experience



Ford Protect

Ford Protect Offers a holistic suite of service, maintenance, extended warranty and roadside assistance products aimed at keeping your Next-Gen Everest in top running condition.



All **Next-Gen Everest** derivatives have its service plan unbundled from the purchase of the vehicle in line with the Competition Commission's Guidelines for the Automotive After-market Industry. Service and maintenance plans can be purchased directly from the Finance and Insurance Manager at any Ford Authorised dealership. The service plan will cover the scheduled services on your selected plan based on the time, intervals and kilometres. For complete peace of mind motoring the Premium Maintenance Plan covers scheduled services, preventative care and replacement of "wear and tear" components as well as mechanical and electrical failure. Terms and Conditions apply.

Warranty: Extension covering your vehicle for up to 7 years or 200 000kms from the original warranty start date.

Service Plans options Available for up to 8 years or 165 000kms from original warranty start date.

Maintenance Plans: Ford Protect has a variety of maintenance options for up to 8 years or 165 000kms.

Roadside Assistance: Opt for an additional 1 or 2 years Roadside Assistance.

Please contact your nearest Ford Dealer for more information regarding Ford Protect plans and products options or visit www.ford.co.za/fordprotect.

Errors and omissions excepted (E&OE). **New Vehicle Limited Warranty.

We're constantly introducing new tools and services, designed to adapt to your needs throughout the life of your vehicle.



FordPass

FordPass puts the ownership experience in the palm of your hands. With the app, you'll enjoy remote access and control to features like Remote Start/Stop, Vehicle Health Alerts, Vehicle Locations and Online Service Booking* anytime, anywhere.



Next-Gen Everest Experts

Whether you're just starting out on your shopping journey or want to learn all about the advanced features and amazing things the Next-Gen Everest can do, our Experts can help with personalised expert advice. Learn about features, get buying advice on what model best suits your lifestyle and even get assistance with reserving a unit online – all at a time convenient to you.



Discover your Ford

An online Learning Hub will give you in-depth information on everything from connecting FordPass to making the most of Drive Modes, all at your fingertips when you need it. With hundreds of tailored multimedia articles, we've made sure you can learn all there is to know about your car anytime, anywhere. Plus there's lots more to come.



Online Service Booking*

You can now book a service for your Ford using the FordPass app or by visiting the Ford website. Simply register on the website or the app and select your preferred Ford dealer to get your vehicle serviced with the least amount of hassle. You can also modify or cancel your booking at any time.



Express Service*

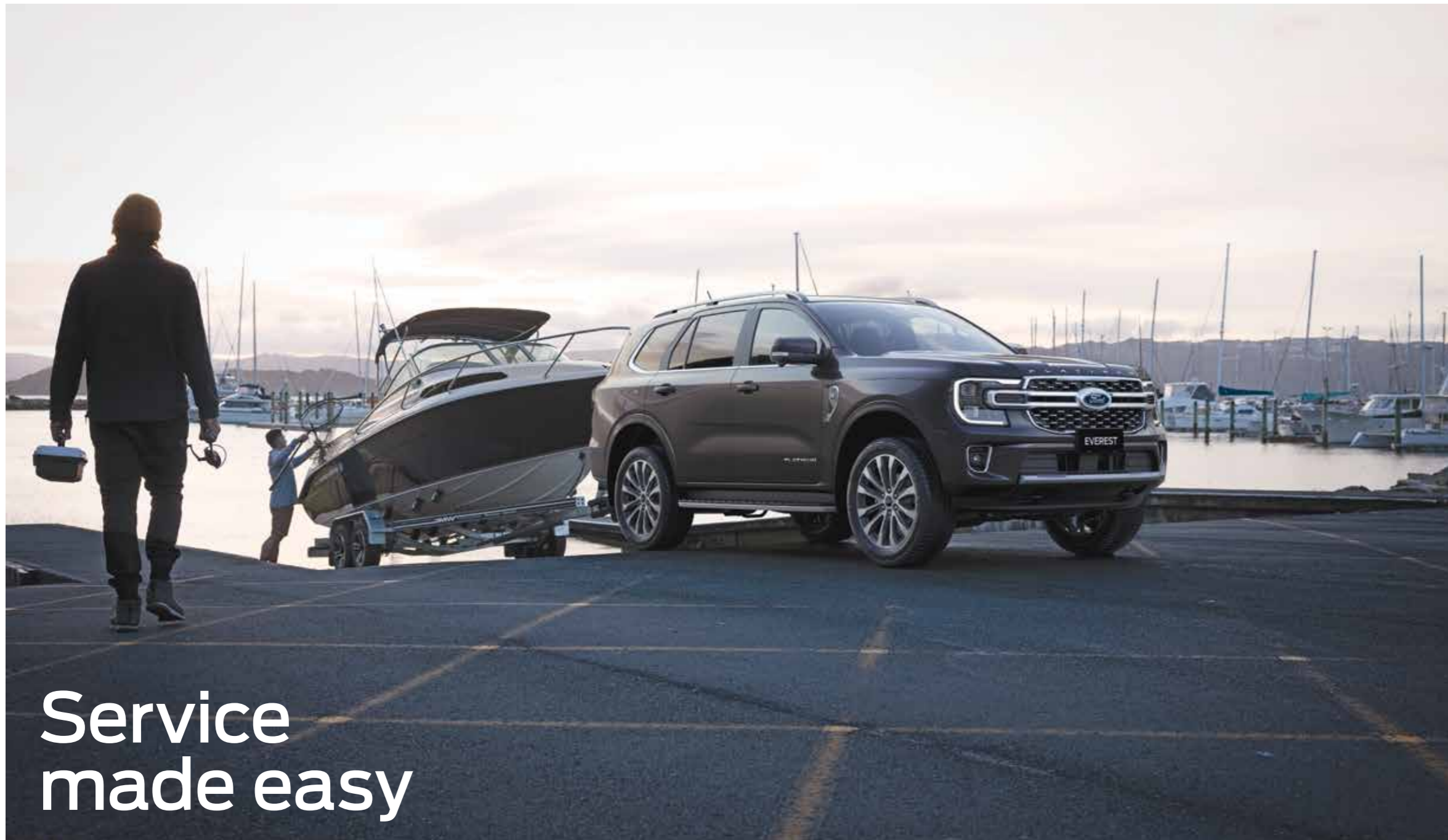
Ford's Express Service is specifically meant for reduced service wait times and when time is of the essence. Our qualified Ford technicians ensure that your vehicle is serviced without any compromise, within an hour, giving you more time on the day of service.



Service Price Calculator

Get the best gauge of your vehicle service costs with our Service Price Calculator. No more surprises and absolute transparency.

*Available at selected Ford dealerships only.



Service
made easy



Intelligent
Oil Life
Monitoring
System
(IOLM)

When you service at Ford with our qualified Ford technicians, your peace of mind is our top priority. We only use Genuine Ford Parts made for your vehicle and provide you with a vehicle health check report, so you know your vehicle is being maintained the way it should. Take advantage of all the Ford Service Benefits on offer.

Ford Service Benefits

Our commitment to you

Convenience and reliability, that's what service should be. That is exactly what Ford promises when you service at a Ford dealership. Enjoy peace of mind knowing that your vehicle is handled using specialised diagnostic equipment and Ford approved tools. After all nobody knows your Ford better than we do. Speak to your preferred Ford Dealer today about how we can help you make the most out of your driving experience.



Service Price Calculator



National Roadside Assistance



Loan Car Program



Genuine Ford Parts



Vehicle Health Report



Online Service Booking*



Express Service*



Big Brand Tyres*

*Available at selected Ford dealerships only.

The way you drive can have a significant impact on how often your oil needs changing.

The Intelligent Oil Life Monitor in Ford vehicles is a smart system that monitors oil life and alerts you with a message in the instrument cluster and FordPass app when the oil needs changing.

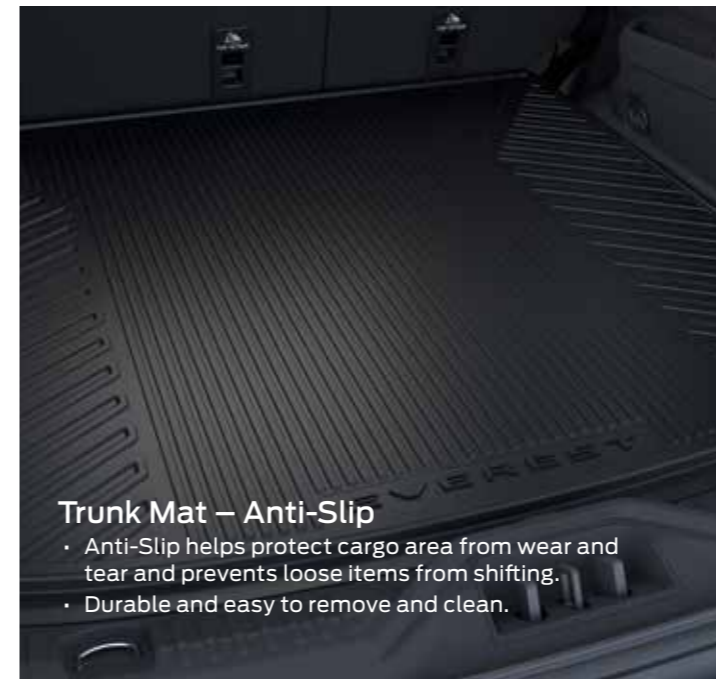


Nobody knows your Ford like we do



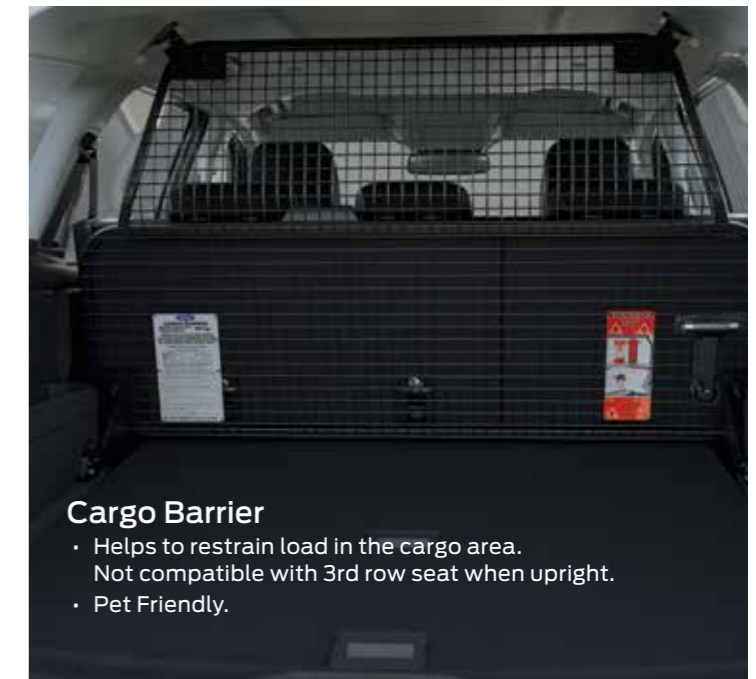
Bonnet Protector

- Helps deflect and prevents stones and other objects from damaging the bonnet.
- UV resistant to prevent cracking, fading or distortion.
- Made from tough durable acrylic.



Trunk Mat – Anti-Slip

- Anti-Slip helps protect cargo area from wear and tear and prevents loose items from shifting.
- Durable and easy to remove and clean.



Cargo Barrier

- Helps to restrain load in the cargo area.
- Not compatible with 3rd row seat when upright.
- Pet Friendly.

There's no better way to personalise your Ford than with the wide range of Ford accessories available for every model.

From cargo netting and floor mats, to bonnet protectors and scuff plates, you'll find lots of options to make your Ford uniquely your own at one of our nation-wide Dealers.



Headlamp Guard

- Help deflect and prevent stones and other objects from damaging the headlamp assembly.
- Styled to follow and compliment the vehicle's contours lines.
- UV resistant to help prevent cracking, fading or distortion.
- Made from tough, durable acrylic.



Weather Shields

- Helps deflect wind and rain.
- UV resistant to help prevent cracking, fading or distortion.
- Made from tough durable acrylic.



Genuine Quality

Every Ford Genuine and Ford Licensed Accessory has undergone a rigorous

evaluation process by Ford engineers to ensure it's fully compatible with your vehicle for optimal integration and performance.



Four Year Warranty

Enjoy complete peace of mind with all Ford Genuine and Ford Licenced

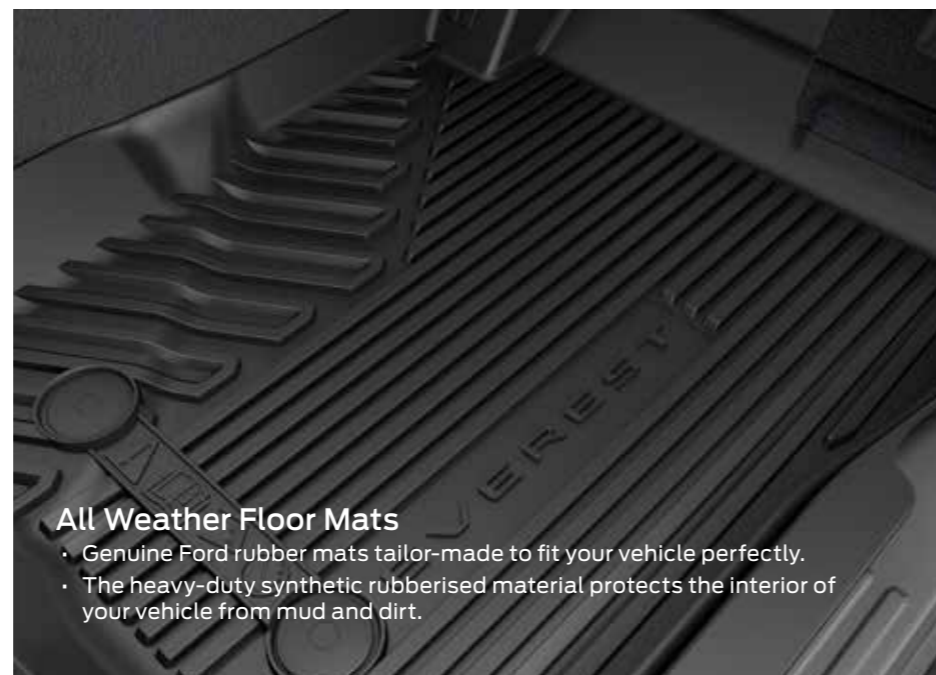
Accessories, backed by a full Ford Warranty of up to 4 Years and 120 000 kilometres.



South Africa Wide

Our vast national network of Ford Dealers means there's a fitment centre

conveniently located near you. Always up-to-date with thorough knowledge of the newest products and latest technical information, your local Ford Dealership is the perfect place for all your accessory needs.



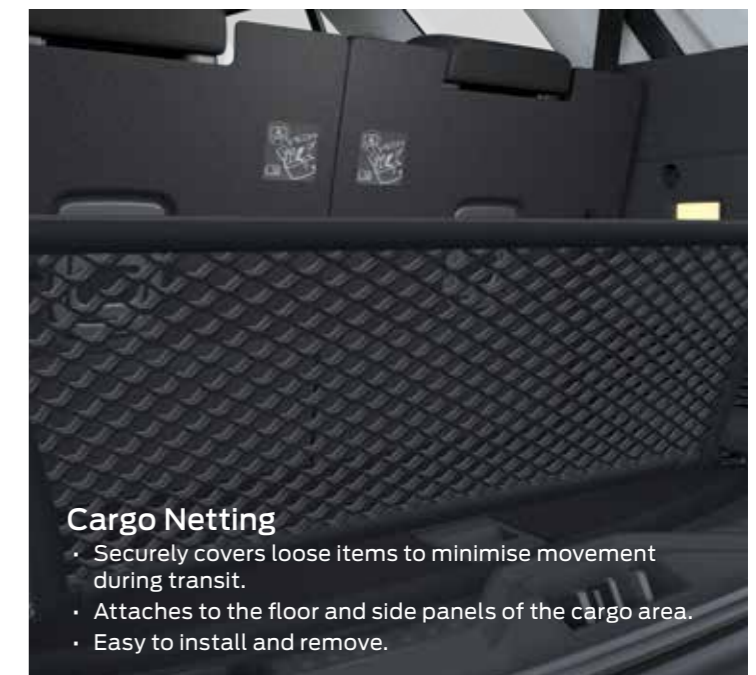
All Weather Floor Mats

- Genuine Ford rubber mats tailor-made to fit your vehicle perfectly.
- The heavy-duty synthetic rubberised material protects the interior of your vehicle from mud and dirt.



Scuff Plates

- Polished stainless steel scuff plates look great and protect your door sills from scratches and scrapes.



Cargo Netting

- Securely covers loose items to minimise movement during transit.
- Attaches to the floor and side panels of the cargo area.
- Easy to install and remove.



LEVEL 1 COMPLIMENTARY 4X4 TRAINING

When purchasing The Next-Gen 4x4 RANGER or EVEREST you qualify for a FREE introductory 4x4 course.*

The benefits of 4x4 training:

Acquire skills and knowledge which can be applied to ensure optimal, safe, and environmentally application of the 4WD vehicle on and off-road.

For more details please see our website:

www.ford.co.za

*The voucher is valid for a year from date of purchase.



Vehicle shown with optional accessories

Next-Gen Everest Sport



Ready to take you on adventures

Next-Gen Everest Platinum



More sophistication and intelligence for every journey

Choose your colour



Arctic White



Aluminium*



Meteor Grey*



Absolute Black*



Snowflake White*



Equinox Bronze*



Blue Lightning*^



Sedona Orange*

Note: The images are used to illustrate body colours only, and may not reflect the vehicle described. Colours and trims reproduced within this brochure may vary from the actual colours, due to the limitations of the printing processes used.

*Metallic paint colours available at additional cost. ^Blue Lightning only available on Sport models.



Sport Standard:
20" Black Alloy
Wheels



Sport Option:
18" Black Alloy Wheels,
with all terrain tyres



Platinum Standard:
21" Alloy Wheels



Platinum Option:
18" Alloy Wheels,
with all terrain tyres

	Sport 2.0L BIT 10AT 4x4	Platinum 3.0L V6 10AT 4WD
Engine		
Engine Type	2.0L Bi-Turbo	3.0L V6 Lion
Engine Size (cm³)	1996	2993
Maximum Power	154kW @ 3750rpm	184kW @ 3250rpm
Maximum Torque	500Nm @ 2000rpm	600Nm @ 2500rpm
Fuel Requirement	Diesel	Diesel
Fuel Economy - NEDC ℓ/100km (urban cycle)	7.5	8.5
Adblue® Injector	-	S
Driveline, Brakes & Transmission		
4x4 with Electronic Shift	S	-
4WD with Electromagnetic Transfer Case (eMTC)	-	S
Electronic Locking Rear Differential	S	S
Disc Brakes	Front & Rear	Front & Rear
Parking Brake	Electric	Electric
Gearshift	Conventional	Electronic Automatic - E-Shifter
Transmission	10-speed Auto	10-speed Auto
Selectable Drive Modes - Normal, Eco, Tow/Haul, Slippery, Mud/Ruts, Sand	S	S
Wheels & Tyres		
Wheels	20" Alloy wheels - Black 255/55/R20	21" Alloy wheels 275/45/R21
18" Alloy Wheels 255/65/R18 with All Terrain Tyres	O	O
Spare Wheel	20 x 8.0" Aluminium	21 x 8.5" Aluminium
Locking Wheel Lug Nut	S	S
Tyre Pressure Monitoring System (TPMS)	-	S
Dimensions Exterior		
Approach Angle (Kerb) (°)	30,3	30,3
Departure Angle (Kerb) (°) with Towbar	23,2	23,2
Ground Clearance (mm)	229	229
Overall Height (mm)	1841	1837
Overhang Front (mm)	871	871
Overhang Rear (mm)	1169	1169
Ramp Breakover Angle (Kerb) (°)	22,2	21,9
Vehicle Length (mm)	4940	4940
Vehicle Width (mm) including mirrors	2207	2207
Wading Depth (mm)	800	800
Wheelbase (mm)	2900	2900
Dimensions Other		
Fuel Tank (ℓ)	76.5	76.5
Gross Combined Mass [GCM, (kg)]	6250	6250
Gross Payload (kg)	759	663
Gross Vehicle Mass [GVM, (kg)]	3100	3150
Tare (kg)	2341	2487
Towing Mass [Braked, (kg)]	3500	3500
Towing Mass [Unbraked, (kg)]	750	750
Exterior		
Door Handles	Black	Body Colour
Door Mirrors	Black	Body Colour
Exterior Mirrors- power adjust, power fold, heated, puddle lamp, turn indicator	S	S
Front Bumper	Black	Platinum
Front & Rear Mud Flaps	S	S
Hood Badge 3D	Everest	Platinum
Power Liftgate	S	S
Privacy Glass	S	S
Radiator Grille	Black	Chrome
Rear Spoiler	S	S
Roof Rack	Black	Bright stand off S - silver matte, brushed insert
Side Step	S	
Underbody Protection	O	S
Exterior Lighting		
Headlamps	LED	LED
Front Fog Lights	LED	LED
Headlamp Levelling	Manual	Manual
Daytime Running Lamps	LED	LED
Rear Fog Lamps	S	S
Taillamps	LED	LED
Exterior Zone Lighting	-	S
Interior		
Ambient Lighting	-	S
Centre Console with Lid and 2 Cup Holders	S	S
Cup Holders - Pop Out on Instrument Panel	S	S
Electrochromatic Rear View Mirror	S	S
Glovebox & Concealed Upper Glovebox	S	S
Floor Carpet Mats	1st & 2nd row	1st & 2nd row
Leather Wrapped Steering Wheel & Gear Knob	S	S
Rain Sensing Windscreen Wipers	S	S
Steering Wheel – Leather with multi media controls (audio & cruise)	S	S
Steering Wheel - Heated	-	S

S = Standard O = Factory Option that can be ordered before a vehicle is manufactured

	Sport 2.0L BIT 10AT 4x4	Platinum 3.0L V6 10AT 4WD
Environmental control		
Dual Zone Electronic Automatic Temperature Control	S	S
Overhead Aircon vents (2nd & 3rd row)	S	S
Rear Aircon With Rear Console Control	S	S
Windows		
Power front & rear windows with one-touch up & down	-	S
Power front windows with one-touch up & down on driver & passenger	S	-
Power Rear Windows	S	-
Seats		
Seat Capacity	7	7
Partial Leather	S	-
Premium Leather Trimmed	-	S
Seat Functionality	- Driver and Passenger 8-way power (slide/recline/height/lumbar)	- Driver memory seat
	- Manual fold 3rd row seats	- Driver and Passenger 10-way power (slide/recline/height/tilt/lumbar)
	- Child Seat ISOFIX Anchorage Points (x 2)	- Heated & ventilated seats (Driver & Passenger)
		- 2nd row heated seats
		- Power fold 3rd row seats
		- Child Seat ISOFIX Anchorage Points (x 2)
Charging		
Axillary 12V Power Outlet - centre console, 2nd row, 3rd row, rear	S	S
400W Power Inverter	S	S
Wireless Charger	S	S
USB A&C Ports (incl Windscreen Mounted USB)	S	S
Audio & Communication		
12" Colour Touch Screen, 8 x Speakers, USB, Bluetooth® with Phone / Audio Streaming	S	-
12" Colour Touch Screen, 12 x Speakers, USB, Bluetooth® with Phone / Audio Streaming, B&O Branded Audio	-	S
FordPass Connect with Embedded Modem	S	S
Ford SYNC® 4A	S	S
Wireless Apple CarPlay & Android Auto	S	S
LCD cluster	8"	12"
Safety and Security		
Airbags x 6 - Front, Curtain & Seat Side	S	S
Anti-lock Brake System (ABS)	S	S
Emergency Brake Warning	-	S
Thatcham Security System incl. Alarm with Perimeter, Interior Motion & Vehicle Inclination Sensors	S	S
Smart Keyless Entry with Push Button Start	S	S
Driver Assistance Technology		
Active Park Assist 2.0 with full autonomous parallel and perpendicular parking	-	S
Cruise Control with Adjustable Speed Limiter	S	-
Adaptive Cruise Control with Traffic Jam assist, Stop & Go and Lane Centering	-	S
BLIS with Cross Traffic Alert & Trailer Coverage	S	S
Hill Descent Control (HDC)	S	S
Hill Launch Assist (HLA)	S	S
Pre-Collision assist, Dynamic Brake Support, Forward Collision Warning, Automated Emergency Braking	S	-
Pre-Collision assist with Dynamic Brake Support, Forward Collision Warning, Automated Emergency Braking, Distance Alert & Indication, Evasive Steer Assist and Intersection Lane Keeping System incl. Lane Keeping Alert, Lane Keeping Aid, Road Edge Detection & Driver Warning	S	S
Parking Distance Sensors – Front	S	S
Parking Distance Sensors – Rear	S	S
Rear View Parking Camera	S	S
360° Camera	-	S
Off-road Screen	S	S
Ford Protect		
Service Intervals	15 000 km	15 000 km
Service Plan - 6 years / 90 000km	O	O
Roadside Assistance	4 years / unlimited km's	4 years / unlimited km's
Comprehensive Warranty	4 years / 120 000km	4 years / 120 000km
Corrosion Warranty	5 years / unlimited km's	5 years / unlimited km's

Terms & Conditions

1. Maximum towing capacity-braked using a Genuine Ford tow pack. Subject to South African laws and regulations. To comply with these limits, occupants and / or luggage may need to be restricted to not exceed the GCM and GVM limits. For further details regarding passenger and luggage restrictions, please consult your authorised Ford Dealer and / or refer to the Owner's Manual.

2. Driver-assist features are supplemental and do not replace the driver's attention, judgement and need to control the vehicle. May not operate at certain speeds, or in certain driving, road or weather conditions. See Owner's Manual for details and limitations.

3. Apple CarPlay™ / Android Auto™ requires phone with compatible version of Apple iOS / Android™ (as applicable), active data service. SYNC® does not control Apple CarPlay / Android Auto while in use. Apple / Google and other third parties are responsible for their respective functionality. Message and data rates may apply. Apple CarPlay, Siri Eyes Free, iPod and iPhone are trademarks of Apple Inc. registered in the US and other countries. Android Auto and Google Maps are trademarks of Google Inc. Ford Applink® is available on selected SYNC® models and is compatible with select smartphone platforms. Warning: Local laws prohibit some phone functions while driving. Check your local road rules before using these functions.

4. Wireless Charging only available with compatible phones.

5. Don't drive while distracted. Use voice-operated systems when possible; don't use handheld devices while driving. Some features may be locked out while the vehicle is in gear. Not all SYNC 4A features are compatible with all phones. For more details see [ford.co.za/technology/sync/](https://www.ford.co.za/technology/sync/)

6. Use of FordPass™ is subject to the FordPass™ Terms and Privacy Policy and the Connected Vehicle Terms and Privacy Policy available on www.ford.co.za/fordpass/ and requires a compatible mobile device, internet access and software (including software updates from time to time). You are responsible for internet access, mobile network data and voice call services required for your use of the FordPass™ App on your mobile device, including associated fees. The FordPass™ App and FordPass™ Connect modem can only work when both are connected to the telecommunications network. Ford cannot guarantee that FordPass™ will be in fully operating condition at all times and the FordPass™ App may be unavailable or particular FordPass™ services interrupted. Ford is not responsible for any limitations or restrictions of the telecommunications network or of your mobile device. Vehicle Local variable on selected SYNC® models and is compatible with select smartphone platforms. **Warning:** Local laws prohibit some phone functions while driving. Check your local road rules before using these functions. Use Remote Vehicle Start and Stop responsibly and only in well ventilated areas where you are aware of your vehicle's surroundings. Refer to FordPass terms and conditions on our website for connected service offered periods.

7. Driver-assist features are supplemental and do not replace the driver's attention, judgment and need to control the vehicle. May not operate at certain speeds, or in certain driving, road or weather conditions. See Owner's Manual for details and limitations.

8. Driver-assist features are supplemental and do not replace the driver's attention, judgment and need to control the vehicle. May not operate at certain speeds, or in certain driving, road or weather conditions. See Owner's Manual for details and limitations. Trailer Coverage system supports conventional trailer dimensions: up to 2.4m wide (measured at trailer front) and up to 10m long from the

rear of your vehicle. Drivers will need to create a profile of their trailers in SYNC to support this system. Only works with a genuine factory fit Ford Tow Bar.

9. Driver-assist features are supplemental and do not replace the driver's attention, judgement and need to control the vehicle. May not operate at certain speeds, or in certain driving, road or weather conditions. See Owner's Manual for details and limitations.

Indicative pre-production vehicle specifications and images shown. Specifications and features on production model may vary. Vehicle undercarriage should be cleaned with fresh water after driving on sand.

The declared fuel consumption and CO₂ emissions figures were achieved during technical laboratory testing in accordance with the legislated technical specifications (SANS 20101: 2006/ECE R101: 2005 as last amended) and validated and approved by the UK Vehicle Certification Authority (VCA). Fuel consumption and CO₂ emissions figures are used to compare different vehicle types under uniform conditions, and are not necessarily indicative of real-life driving conditions. Note that the actual fuel consumption and emissions levels will depend on many factors and are directly affected by the length of the journey; number of passengers and the amount of luggage carried; individual driving style; road conditions; weather conditions; vehicle age, mileage, condition and standard of maintenance; use of vehicle features such as air conditioning; and any modifications to the vehicle. Your fuel economy will vary based on these and other factors and, for these reasons, many drivers may not achieve the EU fuel economy figures in day-to-day driving, although the vehicle is technically capable of doing so.

Ford reserves the right, subject to all applicable laws, to discontinue or change features and other specifications either temporarily or permanently, which will be communicated to the Ford Dealer Network. E & OE.

Fuel economy and emission figures obtained from controlled tests on a combined cycle. Note that the actual fuel consumption and emission will depend on many factors including your driving habits, prevailing conditions and your vehicles equipment, condition and use. Ford reserves the right, subject to all applicable laws, to discontinue or change features and other specification either temporarily or permanently without incurring any liability to any prospective purchaser or purchasers.

All Next-Gen Everest derivatives have its service plan unbundled from the purchase of the vehicle in line with the Competition Commission's Guidelines for the Automotive After-market Industry. Service and maintenance plans can be purchased directly from the Finance and Insurance Manager at any Ford Authorised dealership.

Leather seats are a combination of leather and high-quality, durable materials.

Ford reserves the right, subject to all applicable laws, to discontinue or change features and other specification either temporarily or permanently without incurring any liability to any prospective purchaser or purchasers.

Printed November 2022.

Contact us

If you have any questions or concerns, please contact our Customer Relationship Centre on Tel : 0860 011 022 or email fordcrc2@ford.com

Running a fleet?

Our Ford Fleet team is here to assist you in any way we can.

Please email fleetsa@ford.com

Discover more at ford.co.za



The Ford logo, featuring the word "Ford" in its signature script font, rendered in white against the dark blue background.