


www.ironman4x4.co.za



 +27 76 725 6478

**SUSPENSION ACCESSORIES CAMPING**

### SHOCK ABSORBER SELECTION

IRONMAN 4X4 OFFER THREE RANGES OF SHOCK ABSORBERS. EACH RANGE IS AVAILABLE IN EITHER SOFT COMFORT, MEDIUM OR PROFESSIONAL VALVING. IRONMAN 4X4 SHOCK ABSORBERS ARE AUSTRALIAN DESIGNED AND ENGINEERED AND COME WITH A 3 YEAR/60,000KM WARRANTY.



**GRC**  
NITRO GAS COMFORT

**GR**  
NITRO GAS

**GRP**  
NITRO GAS PROFESSIONAL

#### NITRO GAS SHOCK ABSORBER

Highly versatile performance upgrade from original shock absorbers.

- 35mm piston
- 54mm body
- 16mm piston rod
- Nitrogen gas pressurised
- Twin tube construction



**FEC**  
FOAM CELL COMFORT

**FE**  
FOAM CELL

**FEP**  
FOAM CELL PROFESSIONAL

#### FOAM CELL SHOCK ABSORBER

Larger size and capacity suitable for all conditions.

- 40mm piston
- 60mm body
- 18mm piston rod
- Foam cell technology
- Twin tube construction



**FEC PRO**  
FOAM CELL PRO COMFORT

**FE PRO**  
FOAM CELL PRO

**FEP PRO**  
FOAM CELL PRO PROFESSIONAL

#### FOAM CELL PRO SHOCK ABSORBER

Maximum size and most robust design suitable for all conditions.

- 45mm piston
- 65-72mm body
- 20mm piston rod
- Foam cell technology
- Twin tube construction

### SUSPENSION KIT TYPES



LEAF / LEAF (LL)



COIL / COIL (CC)



STRUT / LEAF (SL)



STRUT / COIL (SC)



TORSION BAR / LEAF (TL)



TORSION BAR / COIL (TC)

Please note: Not all coil springs are available in green and some may be supplied in yellow. Please check before ordering.

## IRONMAN 4x4

# SUSPENSION KITS

Three Shock Absorber Options

	Type	Nitro Gas Kit	Foam Cell Kit	Foam Cell Pro Kit		Type	Nitro Gas Kit	Foam Cell Kit	Foam Cell Pro Kit
<b>TO SUIT FORD</b>					<b>TO SUIT TOYOTA</b>				
Everest 2015+	SC	•	•	•	To Suit FJ Cruiser	SC	•	•	•
Ranger 2011+	SL	•	•	•	To Suit Hilux				
Ranger 2006-2011	TL	•	•	•	2015+	SL	•	•	•
<b>TO SUIT ISUZU</b>					2005-2015	SL	•	•	•
D-Max 2020+	SL	•	•	•	LN/RN 107,110,111,167, SR5	TL	•	•	•
D-Max 2012-2020	SL	•	•	•	LN/RN/YN 65, 105, 106	LL	•	•	•
D-Max 2003-2012	TL	•	•	•	LN/RN/YN/VZN 130 V6 Gen 2	TC	•	•	•
MU-X	SC	•	•	•	To Suit Fortuner 2015+	SC	•	•	•
<b>TO SUIT JEEP</b>					To Suit Landcruiser				
Wrangler JT	CC				VDJ/UZJ 200	SC	•	•	•
Wrangler JK	CC	•		•	HDJ/UZJ 100 IFS	TC	•	•	•
Wrangler TJ	CC	•			HJ/HZJ 80, 105	CC	•	•	•
<b>TO SUIT LANDROVER</b>					Dual Cab 79	CL	•	•	•
Defender 90/110/130	CC	•	•	•	HZJ 78/79	CL	•	•	•
Range Rover/Discovery	CC	•	•	•	HZJ 76	CL	•	•	•
<b>TO SUIT MAZDA</b>					FJ/HJ/HZJ 75	LL	•	•	•
BT50 2020	SL	•	•	•	To Suit Prado 90, 95	SC	•	•	•
BT50 2011-2020	SL	•	•	•	To Suit Prado 120,150	SC	•	•	•
BT50 2006-2011	TL	•	•	•	<b>TO SUIT VOLKSWAGEN</b>				
<b>TO SUIT MITSUBISHI</b>					Amarok	SL	•		
Pajero NM - NX	SC	•			<b>TO SUIT NISSAN</b>				
Pajero NH/NL (Coil)	TC	•	•		Navara NP300 (Coil)	SC	•	•	•
L200/Triton ME - MK	TL	•	•		Navara D40 / NP300 (Leaf)	SL	•	•	•
Triton ML - MN	SL	•	•		Navara D22	TL	•		
Triton MQ - MR	SL	•	•		Pathfinder R51	SC	•	•	
<b>TO SUIT NISSAN</b>					GU Y61 Wagon/Pick-up	CC	•	•	•
Navara NP300 (Coil)	SC	•	•	•	GU/GU Cab Chassis (Coil)	CC	•	•	•
Navara D40 / NP300 (Leaf)	SL	•	•	•	GU Cab Chassis Y61 (Coil/Leaf)	CL	•	•	•
Navara D22	TL	•			GU SWB/LWB	CC	•	•	•
Pathfinder R51	SC	•	•		GU Cab Chassis Y60 (Leaf)	LL	•	•	•
GU Y61 Wagon/Pick-up	CC	•	•	•	<b>TO SUIT SUZUKI</b>				
GU/GU Cab Chassis (Coil)	CC	•	•	•	Jimny GJ 2018+	CC	•		
GU Cab Chassis Y61 (Coil/Leaf)	CL	•	•	•	Jimny 1998-2018	CC	•		
GU SWB/LWB	CC	•	•	•	<b>ACHIEVE UP TO 50MM LIFT DEPENDING ON MODEL</b>				
GU Cab Chassis Y60 (Leaf)	LL	•	•	•					

## EUROPEAN APPROVED SUSPENSION KITS

Australia's leading 4x4 accessory company, Ironman 4x4 has gained formal approval for its range of suspension kits by German TÜV Nord and the German Federal Motor Transport Authority (KBA).

Ironman 4x4 is the first company to successfully receive this approval for the most popular 4x4 pickups sold worldwide.

The approval took more 18 months to achieve the requirements of the most stringent testing and standards.

The approvals cover different 10 vehicles.

For German customers this means that their 4x4's can legally install the KBA/ABE certified suspension kit upgrade without requiring annual re-certification.

For other European 4x4 owners the TÜV Nord approval also allows for legal installation and conformity with all national and international road laws.

Ironman 4x4 suspension kits are sold in more than 160 countries and are the choice of original equipment manufactures across the globe.

Make / Model	TUV	ABE
Toyota Hilux	8115527006	91690
Toyota Prado 150	8115526954	91689
Isuzu D-Max	8115612672	91702
Mitsubishi L200	8114647382	91644
Nissan Navara NP300	8115527010	91688
Ford Ranger	8115612656	91703
VW Amarok	8115612716	91700
Mercedes X-Class	8115612692	91701
Flat Fullback	8114647382	91644
Renault Alaskan	8115527010	91688



This outstanding achievement allows Ironman 4x4 distributors to market the Ironman 4x4 suspension programme aggressively and with confidence in the knowledge that the products are legally approved.



**SUSPENSION ALIGNMENT PRODUCTS**



**PRO-FORGE UPPER CONTROL ARMS**

- Optimise wheel alignment at raised ride height
- More clearance for larger tyres and increased lift
- Drop forged alloy construction
- High strength and durable



OEM Compatible Rubber Bushes



OEM Compatible Ball Joint



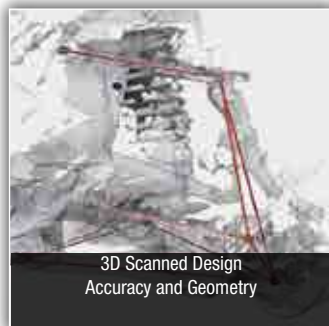
Forged Alloy with High Strength to Weight Ratio



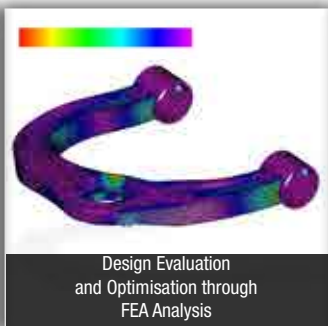
Direct Fitment, no Modification Required

Ironman 4x4 Pro Forge Upper Control Arms allow installation of larger tyres and further increased ride height by providing corrected wheel alignment and greater operating clearance around the arm as is often the limitation when using the OEM upper control arms.

ADR compliant with a 3 Year 60,000km warranty.



3D Scanned Design Accuracy and Geometry



Design Evaluation and Optimisation through FEA Analysis



Design and Fit Verification using an Advanced 3D Printed method

State of the art design and testing ensure every arm is accurate as intended



**ADJUSTABLE PANHARD ROD**

- Used to correct axle shift after raising suspension
- Adjustable to re-centralise axle to vehicle



**ADJUSTABLE STEERING RODS**

- Adjustable length rod to centralise steering wheel after suspension lift



**ADJUSTABLE TRAILING ARMS**

- To suit Toyota Landcruiser and Nissan Patrol
- Comp spec solid 32mm
- On car adjustable
- Rubber bushes



**SWAY BAR MOUNT KITS**

- Stronger than OEM construction
- Stylish anodised billet aluminium design



**CASTER WEDGE KITS**

- Adjusts caster and pinion angle in leaf sprung vehicles



**When your load changes, so should your springs.**

Any heavy accessories or towing load added to your vehicle, changes the handling and overall safety when driving.

The vehicle's springs must be matched to the load for optimum ride height and body control. Ironman 4x4 offers a range of springs to match the additional loads whether they are constant or temporary.

When you start kitting out your vehicle, take into consideration the kerb weight and how much load you are adding, this will change what level of strength you need.



# BULL BARS

- Airbag compatible
- Australian designed and engineered
- Compatible with vehicle safety systems
- ADR certified and tested
- Designed using 3D scan technology
- Made from highest quality SPHC grade steel (except premium alloy bull bar)
- CNC laser cut and robot welded
- Powdercoated with AKZO NOBEL powder



**COMMERCIAL**  
50mm loop bar



**COMMERCIAL DELUXE**  
50mm loop bar with fog lights



**LED FOG LIGHT UPGRADE**  
SUIT IRONMAN 4X4 BULL BAR LIGHT PODS

- 2 x 5W high efficiency LEDs
- IP69 rated sealed housing
- Shatterproof polycarbonate lens
- ECE R19 compliance



Bull bar pricing does not include colour coding

**PROGUARD NO LOOP**

Single or triple loops available



*\*Selected models only*



PROGUARD SINGLE LOOP includes overriders



PROGUARD TRIPLE LOOP includes overriders



**PREMIUM DELUXE**

60.3mm loop bar with fog lights



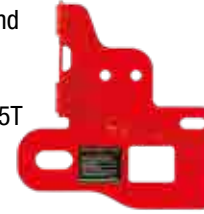
**RAID FULL LENGTH**

Removeable single hoop with integrated light bar  
Integrated 3500kg rated recovery points



**RATED RECOVERY POINTS**

- Supplied as a pair and includes mounting hardware
- Compatible with 4.75T shackle



To Suit Toyota Hilux Vigo 2005 - 2011 (Facelift) 2011 - 2015 (IRP033)

To Suit Toyota Hilux Revo 2015 - 2018 (Facelift) 2018 - 2020 (IRP051)

To Suit Suzuki Jimny 2018 + (IRP070)

To Suit Isuzu D-Max 2019 + (IRP074)

To Suit Ford Ranger / Everest / Mazda BT50 2011+ (IRP054)

Isuzu D-Max 2012+ (IRP058)

To Suit Nissan NP300 / D40 Navara 2005+ (IRP005)

To Suit Mitsubishi MQ Triton 2015 - 2018 (IRP050)

To Suit Mitsubishi MR Triton / Pajero Sport (IRP059)

To Suit Toyota Hilux / Fortuner 2015+ (IRP051)

To Suit Toyota Prado 150 2009+ (IRP064)

To Suit Toyota Landcruiser 79 2007+ (IRP019)

To Suit Toyota Landcruiser 200 2007+ (IRP056)

To Suit Isuzu MU-X 2014+ (IRP058)

**AIR FORCE SNORKEL**



**DESIGNED AND TESTED IN AUSTRALIA**

- Raised air intake for cleaner air and safer water crossings
- UV stabilised polyethylene (LLPDE)
- Ram head with built-in rain deflector
- Increased airflow for improve performance
- Dyno tested for improved air intake
- 5 year warranty



SNORKEL MESH



**UNIVERSAL DIFF BREATHER KIT**



- Suitable for diff housings, transfer cases, gear boxes and winch motors

**KIT CONTAINS:**

- Twin breather manifold with brass filters and hose barbs
- 2 x barb fittings
- 10m oil resistant hose
- 4 x stainless steel hose clamps
- 2 x self drilling screws
- Cable ties

IDIFFBRE

## SIDE STEPS AND RAILS

- Heavy duty steel construction with black powdercoated finish
- Checkerplate step treads
- Available in standard 50mm or heavy duty premium 60.3mm
- (Premium not available on all models)
- Airbag compatible

**Side Steps**  
Standard 50mm tube

**Steps / Rails Combo**  
Standard 50mm tube

**Side Steps**  
Premium 60.3mm tube

**Steps / Rails Combo**  
Premium 60.3mm tube



Side Steps



Side Steps / Rails Combo



Side Steps / Rails Combo



## UNDERBODY UBP SERIES PROTECTION



The premium underbody protection solution to safeguard against off-road damage from rocks, stumps and ground strikes.

- Australian designed and engineered
- 2 year warranty
- 4mm fabricated steel
- 3 x more area coverage
- Anti-corrosion coating
- Textured black powdercoated finish
- Airflow ventilation
- Service inspection holes





## REAR PROTECTION TOW BAR

PROTECT THE REAR OF YOUR UTE WITH AN IRONMAN 4X4 STEEL PROTECTION BAR

- Australian designed and engineered
- Constructed from 4mm steel, with 8mm tow bar sub frame
- ADR and Australian standards compatible
- Dynamic and static testing to 3500kg
- Integrated tow bar
- Includes tow hitch, pin and 50mm 3500kg tow ball
- Protected trailer and Anderson plug location
- LED numberplate lights



## REAR PROTECTION TOW BAR PLATES

- Provides additional grip when using as a step
- Steel construction with a textured black powdercoated finish



## TOW BAR WIRING LOOMS

- German made
- CAN bus compatible
- Plug and play
- OEM style connectors





**MEGATOM**  
LED SPOT AND LIGHT BAR IN ONE

- Independent operation
- 75W driving light
- 45W light bar

I5EGATOM



**METEOR**  
7" OR 9" LED DRIVING LIGHTS WITH DAYTIME RUNNING LIGHT

- 7" - 4320 raw lumens
- 9" - 9180 raw lumens

I5ED7M I5ED9M



**BLAST PHASE II**  
7" LED SPOT OR SPREAD DRIVING LIGHTS

- 4320 raw lumens

I5EDBLAST2C I5EDBLAST2S



**ECLIPSE**  
DRIVING LIGHT WITH SIDE SHOOTERS

- 7540 raw lumens

I5LED5X7



**COMET**  
7" OR 9" LED DRIVING LIGHTS

- 4000 raw lumens

I5LED7C I5LED9C



**9W FLOOD BEAM LED ROCK LIGHT**  
77 x 44mm Clear lens

I5RL120B

**CUBE LIGHTS**



	Watts	Beam Style	Colour	Part No.
<b>A</b>	20W	Spot	Clear	I5LED20B
			Amber	I5LED20BA
<b>B</b>	20W	Flood	Clear	I5LED20BF
			Amber	I5LED20BFA
<b>C</b>	20W	Flood	Red	I5LED20BFR
			Amber	I5LED20BFA
<b>D</b>	40W	Spot	Clear	I5LED80B
			Amber	I5LED80BA
<b>E</b>	40W	Flood	Clear	I5LED80BF
			Amber	I5LED80BFA
<b>F</b>	40W	Flood	Amber	I5LED80BFA



**LED LIGHT COVERS**  
FOR 7" OR 9" LED LIGHTS

- Shatterproof polycarbonate plastic



**7" 30W UNIVERSAL LED FLOOD OR SPOT**

- Interconnectable modular design

I5LEDWL10



**UNIVERSAL LED WORK LIGHT**

- 10W
- Available in clear or amber



**10W LED FOG LIGHT**

- Suits Ironman 4x4 bull bar light pods

I5BBPART031

**LED LIGHT BARS**

**BRIGHT SABRE-X SINGLE ROW LED SLIM LIGHTBARS**



Length	Watts	Part No.
177mm (7")	30W	I5LBSR005B
522mm (22")	105W	I5LBSR003B
798mm (32")	165W	I5LBSR002B
1005mm (40")	210W	I5LBSR001B
1281mm (50")	270W	I5LBSR000B

**BRIGHT SABRE SINGLE ROW LED LIGHTBARS**



524mm (20")	75W	I5LBSR003BW
812mm (32")	120W	I5LBSR002BW
1004mm (40")	150W	I5LBSR001BW

**BRIGHT SABRE DUAL ROW LED LIGHTBARS**



561mm (21.5")	200W	I5LBDR003B
815mm (32")	300W	I5LBDR002B
1076mm (42.5")	400W	I5LBDR001B

**BRIGHT SABRE DUAL ROW MULTI-FUNCTION LED LIGHTBARS**



815mm (32")	300W	I5LBDR002BM
1076mm (42.5")	400W	I5LBDR001BM

**STRAIGHT**

279mm (11")	30W	I5LBSR004
500mm (19.5")	105W	I5LBSR003
722mm (28.5")	165W	I5LBSR002
942mm (37")	210W	I5LBSR001

**NIGHT SABRE SINGLE ROW LED LIGHTBARS (STRAIGHT AND CURVED)**



**CURVED**

500mm (19.5")	90W	I5LBSR003C
722mm (28.5")	135W	I5LBSR002C
942mm (37")	180W	I5LBSR001C



**5" (61W) OR 3" (30W) UNIVERSAL LED WORKLIGHTS**

- Each with side shooter spread

I5LEDUNI5 I5LEDUNI3



**20W COSMO DUAL LED WORKLIGHT**

I5LEDCOSMO



**18W STARBRITE RECHARGEABLE FLOODLIGHT**

I5LEDSB





# MONSTER WINCH

WWB9500SR  
9500lb Winch  
WWB12000SR  
12000lb Winch



SYNTHETIC ROPE  
AND ALLOY FAIRLEAD

## WINCH PACKAGE INCLUDES



WINCH DAMPER

WINCH BLANKET



EXTERNAL  
REMOTE  
BREATHER



WIRELESS /  
PLUG-IN  
CONTROLLER



COMPETITION  
STYLE SOLENOID

- Designed to fit most winch compatible bull bars on the market
- High speed balanced motor with sealed bearings
- Repositionable clutch handle IP68 rated
- External remote motor breather
- Integrated anti-tamper power cut off
- Fully sealed competition style solenoid
- All in one wireless/plug in controller with LED torch
- Australian engineered and designed
- 5 year warranty



STEEL CABLE  
AND ROLLER FAIRLEAD

WWB9500  
9500lb Winch  
WWB12000  
12000lb Winch



**AUSTRALIAN  
ENGINEERED  
& DESIGNED**



**60L Capacity**  
550 W x 460 D x 335mm H

**100L Capacity**  
700 W x 460 D x 410mm H

**216L Capacity**  
1300 W x 460 D x 460mm H

**140L Capacity**  
915 W x 460 D x 440mm H

**48L Capacity**  
410 W x 410 D x 410mm H  
\*Removable storage tray not included

**65L Capacity**  
900 W x 460 D x 250mm H  
\*Removable storage tray not included

- Manufactured from tough LLDPE UV 3.6mm stabilised plastic
- Dust and water resistant - safe for tools, camping gear and electronic equipment
- Lockable heavy duty latches
- Heavy duty spring loaded handles / tie down points
- Removable tool / storage tray\*
- Strap over points for added security when in transit
- Interlocking stackable design

Capacity	Part No.
48L	IMC001*
60L	IMC002
65L	IMC006*
100L	IMC003
140L	IMC004
216L	IMC005

\*Removable storage tray not included



## WEATHERPROOF ROOFTOP CARGO BAGS

### FREE UP VALUABLE BOOT SPACE

- Weatherproof, reinforced tear resistant fibre, constructed from 500D PVC tarpaulin
- Water resistant zipper overlap and welded seams provides added protection from water ingress
- Heavy duty webbing straps, zips and UV50+ buckles
- Noise and wind reducing traps and buckles

Capacity	Part No.
A 200L	IRLB200
B 250L	IRLB250
C 350L	IRLB350
D 500L	IRLB500
E 600L	IRLB600



### WATER TANKS

- UV stabilised polyethylene (LLDPE)
- BPA Free, and FDA approved



	Capacity	Style	Dimensions	Part No.
A	40L	Vertical	1100 W x 75 D x 720mm H*	IWT003
B	50L	Wheel Arch	1215 W x 120 D x 590mm H*	IWT005
C	50L	Tapered	1000 W x 200 D x 390mm H*	IWT006
D	40L	Double	335 W x 465 D x 340mm H*	IWT002
E	20L	Jerry Can	170 W x 350 D x 460mm H*	IWT001
F	60L	Standard	845 W x 360 D x 270mm H*	IWT007
G	50L	Roof Rack	1200 W x 600 D x 120mm H*	IWT004
H	-	Tank Hose	1500mm L with Tap	IWTHOSE
I	15L	Under Tray	345 W x 255 D x 305mm H	IWT008

\*Includes height of screw cap



### FRIDGES/FREEZERS



65L CAPACITY  
IFRIDGE65



74L CAPACITY  
IFRIDGE74



Internal LED lights

#### SECOP COMPRESSOR (FORMERLY DANFOSS)

- Digital control panel
- Super bright internal LED light
- Three stage battery protection
- High efficiency, low current draw
- Max and economy modes
- Multi-voltage DC 12-24v and AC 100-240v



50L CAPACITY  
IFRIDGE50



40L CAPACITY  
IFRIDGE40



30L CAPACITY  
IFRIDGE30



**ACCESSORIES**



**FRIDGE BAGS**

- Extra insulation
- Side pockets

**30/40L** IFRIDGE30BAG  
IFRIDGE40BAG

**50L** IFRIDGE50BAG

**65/74L** IFRIDGE 65 74 BAG



**FRIDGE SLIDES**

- 100kg rating
- Lock-in and lock-out slide
- Includes four tie down straps

**30/40 AND 50L** IFRIDGESLIDE001

**65/74L** IFRIDGESLIDE002



**TILT FRIDGE SLIDE 30-50L**  
**TILT FRIDGE SLIDE 65-70L**



IFRIDGESLIDE34

IFRIDGESLIDE45



**WIRELESS LCD FRIDGE THERMOMETER**

- Displays internal and ambient temperatures wirelessly
- Up to 50m transmission

IWFT001



**FRIDGE STAND**

- Aluminium frame
- 100kg weight capacity
- Adjustable height
- Non slip rubber
- Adjustable, levelling feet

IFRIDGESTAND001



**FRIDGE STRAPS**

- Lashing capacity of 75kg
- Four straps

IFRIDGE STRAPS

**SOLAR PANELS**



**SOLAR MAT PANEL KIT**

- A-Grade Monocrystalline Cell
- Shingle cell construction
- Charge regulator with 8 battery type function
- Plug-and-play with 50A Anderson plugs
- Built-in stands for setup flexibility
- Heavy duty carry bag included
- 3 year warranty

**120W** ISOLAR120  
1430 x 475 x 4mm (Open)

**200W** ISOLAR200  
2150 x 575 x 4mm (Open)



IDCCSOLAR

**40A DC TO DC INTEGRATED SOLAR BATTERY CHARGER**

- Smart alternator compatible
- Solar input 50W to 400W
- Pre-wired for battery monitor

**COMPRESSORS**

**90L/MIN COMPRESSOR**

- 12V, 450W motor with 45mm cylinder
- 40A maximum current
- Snap-on quick release fitting
- 8m heat resistant, heavy duty hose with inline pressure gauge/deflator
- Moisture and dust resistant



**160L/MIN COMPRESSOR**

- 12V, 540W motor with 60mm cylinder
- 45A maximum current
- Snap-on quick release fitting
- 8m heat resistant, heavy duty hose with inline pressure gauge/deflator
- Moisture and dust resistant

**COMPACT DEFLATOR**

- Quick connect speedy deflator



ITYRE004

**DUAL INFLATOR**

- Inflate 2 x tyres at once
- Extension hose (ITYRE008)



ITYRE007

**PRESSURE GAUGE**

- Reading hold function



ITYRE006

**SPEEDY DEFLATOR**

- USA Patented
- Accurate and easy to read pressure gauge
- Corrosion resistant



ISPEEDY

**SMART DEFLATOR WITH GAUGE**

- Quick connect with pressure gauge



ITYRE005

**TYRE REPAIR KIT**

- Emergency puncture repair
- No need to remove tyre
- Quick and easy to use



ITYRE001

Self-Vulcanising Repair Cords



ITYRE002



**RECOVERY KITS**

**LARGE KIT**

- 3m x 12000kg tree trunk protector
- 20m x 4500kg winch extension
- 9m x 8000kg snatch strap
- 2 x 4.75t bow shackles
- Snatch block
- Leather gloves
- Kit bag



IRECKIT003

**SMALL KIT**

- 9m x 8000kg snatch strap
- 2 x 4.75t bow shackles
- Leather gloves
- Kit bag



IRECKIT004

**RECOVERY STRAPS**

**8000KG BREAK STRENGTH SNATCH STRAP**

ISNATCH005



**11000KG BREAK STRENGTH SNATCH STRAP**

ISNATCH006



**12000KG BREAK STRENGTH TREE TRUNK PROTECTOR**

ITREE

**4500KG BREAK STRENGTH WINCH EXTENSION STRAP**

IWINCHEXT





**ALLOY HAWSE**  
WWWHAWE



**TYRE LIFT KIT**  
IHIGHLIFT04



**RECOVERY HITCH**  
IHOOK BOW



**4.75T BOW SHACKLE**  
IBOW



**LEATHER GLOVES**  
IGLOVES



**BUMPER LIFT KIT**  
IHIGHLIFT003



**RECOVERY HOOK**  
ITOW



**8000KG RATED SNATCH BLOCK**  
IBLOCK



- KINETIC SNATCH ROPE**
- 9500kg break strength
  - Designed to stretch up to 30% providing a safer recovery by reducing shock load
  - Manufactured with a high strength nylon 66 (polyamide) double braid cover and abrasion resistant core
  - Storage bag included

ISNATCHROPE



- SOFT SHACKLES**
- A safer, lightweight, simple to use alternative to steel shackles
  - Manufactured from; high strength, low friction, 12 strand single braid, UHMWPE rope
  - Storage bag included

**14000KG BREAK STRENGTH**  
ISOFSHA001

**17500KG BREAK STRENGTH**  
ISOFSHA002



**SYNTHETIC WINCH ROPE**  
9.5mm x 27m  
WWWROPE001

**RECO-TRAKS**



**GREEN**  
IRECBRDGREEN



**GREY**  
IRECBRDGREY



**SAND**  
IRECBRDSAND

**4WD LIFT JACK**



- 1050kg lifting capacity
- 48"**  
IHIGHLIFT001
- 60"**  
IHIGHLIFT002

**RECO-TRAKS ACCESSORIES**



**MOUNT BASE**  
IRECBRDBASE



**MOUNT PINS**  
IRECBRDPINS115



**BOARD LEASH**  
IRECBRDLEASH



### SWIFT 1400 ROOFTOP TENT

- Aluminium and steel construction with roof insulation
- Combined 8cm thick, 220 x 130cm mattress
- 280gsm Ripstop poly-cotton with midge-proof mesh
- 82kg, 230 x 140 x 19cm in-transit dimensions
- Perfect for large SUVs and steel/alloy canopies

IRTT0012



### NOMAD 1300 ROOFTOP TENT

- ABS cover and base with aluminium bracing
- Combined 6cm thick, 240 x 160cm (Queen+) mattress
- 420D Ripstop poly-cotton with 420D polyester fly
- 68kg, 160 x 130 x 37cm in-transit dimensions
- Perfect for SUVs and ABS/Fibreglass canopies

IRTT0023

### FRONT EXTENSION AWNING KIT (not shown)

- Easily attaches to awning on front of tent
- Includes all poles, pegs and guy ropes

IRTTAWN0023



### SOFT ROOFTOP TENT

- 10 minute setup
- Premium 280gsm Ripstop poly-cotton canvas, waterproof and breathable
- "Climate cover" flysheet controls temperature and reduces condensation
- All openings with insect mesh and internal covers
- 65mm high density luxury foam mattress
- Heavy duty 1000D waterproof transport cover
- Lightweight aluminium and insulated floor
- 140 wide x 240 long x 130 cm high (Int.dimensions)
- Heavy duty YKK zips

IROOFTENT TENT



Comes complete with all tools and step by step instructions required for easy installation



### ANNEX (sold separately)

- Suits soft rooftop tent only
- Easily zips onto the main tent
- 1000D waterproof PVC built-in removable floor
- All openings with insect netting mesh and internal covers
- Extension kit available

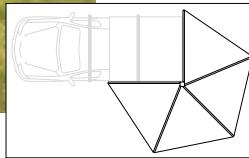
IROOFTENT ANNEX



### ROOF TENT BAG

- 1000D waterproof PVC with heavy duty stitching and YKK zips
- Attach and use via any sail track
- Off ground storage
- 32L capacity

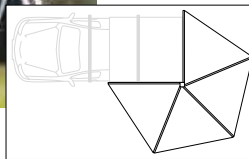
ITENTBAG001



**DELTAWING 270° XT-71**

- 71 square feet (6.6m<sup>2</sup>) coverage
- 25/22mm aluminium tubular frame and support poles
- 280gsm Ripstop poly-cotton shelter with a PU2000 water rating

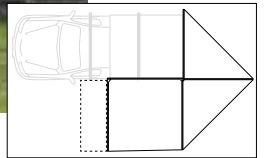
**Left Hand Side** IAWN270L034  
**Right Hand Side** IAWN270R034



**DELTAWING 270° XTR-71**

- 71 square feet (6.6m<sup>2</sup>) coverage
- 40 x 40mm C-Channel aluminium frame, 25/22mm tubular support poles
- 280gsm Ripstop poly-cotton shelter with a PU2000 water rating
- Can be operated unsupported in calm conditions

**Left Hand Side** IAWN270L023  
**Right Hand Side** IAWN270R023



**DELTAWING 270° XTR-143**

- Up to 143 square feet (13.3m<sup>2</sup>) coverage\*
- 40 x 40mm C-Channel aluminium frame, 25/22mm tubular support poles
- 280gsm Ripstop poly-cotton shelter with a PU2000 water rating
- Can be operated unsupported in calm conditions

**Left Hand Side** IAWN270L012  
**Right Hand Side** IAWN270R012

\*Additional support poles and guy ropes are required and sold separately (IAWNINGPART009)



**WALL KIT TO SUIT DELTAWING XT/XTR-71 AWNING - 2 PIECE DOOR AND WALL** IAWNWALL27023



**WALL KIT TO SUIT DELTAWING XT/XTR-71 AWNING - 2 PIECE WALL ONLY** IAWNWALL27034



**WALL KIT TO SUIT DELTAWING XTR-143 AWNING - 2 PIECE DOOR AND WALL** IAWNWALL27012



**AWNING CAMP ORGANISER**



**LED KIT TO SUIT DELTAWING XTR-71 AND XTR-143 AWNINGS**

- Three LED light bars
- In-line controller

IAWNINGORG12

IAWNLED270012



## INSTANT LED AWNING

- Premium 280gsm Ripstop
- UV50+ rated poly-cotton canvas
- Twist lock poles
- Integrated LED light
- Reflective guy ropes
- 1000D PVC cover

### AWNING SIZES:

1.4m L x 2.0m Out

IAWNING1.4M

2.0m L x 2.5m Out

IAWNING2M

2.5m L x 2.5m Out

IAWNING2.5M



Flexible Nylon Joints



Ripstop Canvas



Reflective Guy Ropes



Light Strip Dimmer

## AWNING ROOM WITH INSECT NETTING

- 5-10 minute setup
- An all in one room with insect netting
- Integrated ceiling and zip away PE floor for easy cleaning
- Attaches via any standard sail track, fastening in place via a zip and heavy duty clips
- Integrated external entry mat, insect protection mesh windows and the option of a verandah on each entry with the use of additional poles and guy ropes
- High performance 300D water resistant Ripstop polyester fabric and seam sealed stitching



2.0m L x 2.5m Out  
2.5m L x 2.5m Out

IAWNING2MROOM  
IAWNING2.5MROOM

## AWNING XTRA

### A CONVENIENT ALCOVE

- Built from 280gsm Ripstop poly-cotton
- Attaches via any standard sail track
- Gusseted heavy duty clips
- Gusseted eyelets
- UV50+ rated

2.0m L x 1.4m Out

IAWNING2MWALL

2.5m L x 1.4m Out

IAWNING2.5MWALL



## AWNING QUICK RELEASE BRACKET

### DESIGN REGISTERED AND MADE IN AUSTRALIA

- Allows you to set up camp and drive away, leaving your awning free standing
- Easily swap awning to a different vehicle
- Allows you to store awning off the vehicle when not in use
- Can be used to mount other accessories, such as tradesman tools
- The extra hook kit allows you to mount your awning for use at home as a shelter over a BBQ area, over the kids play area etc, making your awning multi use
- Fits Ironman 4x4 and most other awnings
- Can be padlocked on for security
- Rated up to 35kg
- Limited lifetime warranty



### Quick Release Bracket

IAWNINGQR

### Hook Kit

IAWNINGQR HOOK

## SWAGS



\*Available Dec 2021

### RIDGE POLE STYLE\*

- 420gsm poly-cotton canvas
- 600g PVC tub base
- 70mm high density foam mattress
- Aluminum poles
- External storage pouch
- Additional awning poles included
- Storage bag

**SINGLE**  
ISWAG0023

**DOUBLE**  
ISWAG0034



### -5° SWAG BAG

- Large sizing: 235cm (L) x 100cm (W)
- 300gsm cotton canvas
- -5°C temperature comfort rating
- Dual layer 360gsm lofty hollow fibre with baffles
- Zip 2 bags together to make double sized sleeping bag
- Includes duffle carry bag



ISWAGBAG

### QUICK-FOLD STRETCHER 2-SECOND SET-UP

- Heavy duty material construction
- High strength steel frame
- Integrated head and foot padding
- Includes carry bag



IQFS001

## CHAIRS

### KING QUAD CAMP CHAIR\*

- Comfortable quilted padded seat
- Adjustable lumbar support
- In arm cooler and can holder
- Storage pocket and mobile phone holder
- Wine glass holder
- Dust and water resistant carry bag
- 250kg weight capacity



ICHAIR0056

### CLUB LOUNGE QUAD FOLD CAMP CHAIR\*

- Comfortable quilted padded seat
- Storage pocket and mobile phone holder
- Dust and water resistant carry bag
- 150kg weight capacity



ICHAIR0045

### KING HARD ARM CAMP CHAIR

- Comfortable quilted padded seat
- Lumbar support
  - Can holder
  - Storage pocket and mobile phone holder
  - Dust and water resistant carry bag
  - 200kg weight capacity



ICHAIR0067

### LOW BACK QUAD FOLD CAMP CHAIR

- Compact design
- Lumbar support
- Padded head rest
- 130kg weight capacity



ICHAIR0034

### DELUXE SOFT ARM CHAIR

- Soft arms with high strength steel frame
- Integrated drink holder and insulated pocket
- Side utility pocket
- 150kg weight capacity



ICHAIRSA005

### DELUXE LOUNGE CAMP CHAIR

- Extra comfort padding
- Integrated drink holder pocket
- 150kg weight capacity



ICHAIRL003

### DELUXE HARD ARM CHAIR

- Rear locking tabs lock chair open or closed
- Solid arms with high strength steel frame
- Integrated side drink holder
- 150kg weight capacity



ICHAIRHA004

### MID SIZED LOW BACK CAMP CHAIR

- Compact design
- Ideal for festivals and juniors
- 130kg weight capacity



ICHAIRMS

**CAMP TABLES**



**ALUMINIUM CAMP TABLE**

- Height adjustable
- Full aluminum construction
- Compact and lightweight design
- Roll top design
- 600D Oxford carry bag
- Assembled - 835 x 482 x 415 / 600mm
- Packed - 585 x 205 x 125mm
- 25kg weight rating
- Weight: 3.6kg

ITABLE0023



**MULTI-USE SIDE CAMP TABLE**

- Compact design
- Padded carry handle
- Converts from a soft to hard table top
- Storage pocket
- 80kg weight rating

ITABLE0012



**QUICK FOLD DOG BED**

- Compact design
- Includes padded mattress
- Storage bag
- 800 L x 800 W x 250mm H

IPET0023



**QUICK-FOLD CAMPING STEPS**

- Non-slip glow in the dark treads
- Quick-click double locking legs
- Carry / storage bag
- 180kg max weight rating

IQFSTEP



**LED AREA LIGHT**

- 3500 lumens
- 12V DC power input
- Aluminium adjustable extension pole (Maximum height 3m)
- Wireless control with dimmer function (Range 10m)
- Ground mounting stake
- Storage bag included

IAREALED001



**LED AREA LIGHT TRIPOD STAND**

IAREATRIPOD



ILANTERN002

**MINI LED LANTERN**

- 200 lumens
- Use as a lantern or a torch
- 2 brightness settings, as well as an S.O.S. flashing function
- 80m beam distance with CREE LEDs



ILANTERN003

**LED LANTERN**

- 320 lumens
- 80m beam distance with bright white CREE LEDs
- Multi-function: White light, red light and small LEDs
- Includes flashing S.O.S. operation on both white and red lights



ILANTERN004

**LED LANTERN AND BUG ZAPPER**

- Lithium rechargeable battery
- Foldable and compact design
- Soft diffuser
- Hanging hook
- USB charge cable
- Three light outputs
- Bug zapper with ultra violet light
- USB outlet for charging devices



ILEDWLC

**LED WORK LIGHT COMBO (SET OF 2 WORK LIGHTS)**

- 420 and 80 lumens
- Magnet for positioning light in work area
- 2 x brightness options, plus a torch function
- Batteries included



**RECHARGEABLE TENT FAN / LED LIGHT**

- 100 lumens
- Dual speed fan and twin setting LED light
- Up to 16 hours fan speed runtime
- Up to 40 hours runtime LED light
- Soft foam, child safe fan blades

ITENTFAN002



**HIGH FLOW TENT FAN AND LED LIGHT**

- Lithium rechargeable
- Compact design
- Integrated LED light
- Hanging hook and table stand
- USB charge cable - 1m USB-C to USB-A
- Battery indicator
- Three light outputs - high / med / low
- Three fan speeds - high / med / low

ITENTFAN003



**LED TENT LIGHT**

- Batteries last up to 30 hours at full charge
- 24 x premium white LEDs

ITENTLIGHT002



**LED SENSOR HEADLAMP**

- 220 lumens with CREE LEDs
- Manual or sensor operation
- 120m beam distance

IHEADLAMP002



**AWNING 12V LED LIGHT STRIP AND DIMMER SET**

- 1.2m LED light strip
- 3m wire with 12V plug and switch
- Attaches via sail track
- Dimmable
- IP68 rated

IAWNINGPART006



**12V LED LIGHT STRIP**

- 1.2m LED light strip
- 3m wire with 12V plug and switch
- 12V socket with battery clips

ILEDSTRIP



**LED LIGHT DIMMER**

- Adjust brightness of LED light strips

ILEDDIMMER

**EZY-GO TOILET**



ITOILET12

- Easy to clean, removable lid and seat
- Easy to use, hand pump flush
- 12L fresh water storage
- 12L / 20L waste tank
- Double sealed drain valve, prevents leaks and odours
- Self contained toilet with no external connections



**BUSH TOILET**

- Compact design, folds flat
- Galvanised rust-proof steel
- Supports up to 200kg
- Includes carry bag

IBUSHTOILET

**BUSH TOILET BAGS**

- 10 per pack
- Bio-degradable replacement bags

IBTBAGS



ISEAT COVER

**UNIVERSAL SEAT COVERS**

- 100% Nylon universal fit
- Resists mud/grease/water
- Washable



**EXPLORER DUFFLE BAG**

- 65L capacity
- 1000D waterproof PVC with side compression straps
- Internal mesh zipper pocket
- Top handles

IDUFFBAG001



**TOURING CARGO BAG**

- 50L capacity
- Heavy duty, waterproof polyester
- Top and side carry handles
- Duraflex® buckles

ICARGOBAG001



**MULTI-PURPOSE WHEEL CARRIER BAG**

- 55L capacity
- Made super strong from 1000D PVC with drain holes for easy cleaning
- Reinforced 50mm webbing straps

IRWB001

### 12V PORTABLE CAMP OVEN



- Stainless steel baking tray and wire racks included
- 0-180° temperature adjustable
- Insulated door with latch
- 1-120 minute timer

\*Available Jan 2022

IOVEN0012

### SHOWERS

#### 15L GRAVITY SOLAR SHOWER



ISHOWER003

- TPU material with high frequency welded seams
- Adjustable hanging strap
- Flexible hose with quick connect and self sealing fittings
- Built-in temperature gauge
- Wide filling point
- Storage bag
- Dimensions - 590 H x 450mm W
- Weight - Incl all Accessories 0.6kg

#### RECHARGEABLE PORTABLE SHOWER



ISHOWER001

- Lithium Ion battery
- Suction mounting bracket
- Mounting hook
- Mesh storage bag
- Shower head - Spray on / off function
- Spray head - trigger on / off function
- Cigarette lighter adaptor and USB charge cable
- Replaceable lithium battery pack

### COLLAPSIBLE KITCHEN UTENSILS

- TPR and PP materials
- Strong and sturdy



#### KETTLE

- 2L capacity

IKETTLE001



#### 10L BUCKET

- With carry handle

IBUCKET0012



#### DISHWASHING TUB AND RACK

- With plate and utensil stands and drip tray

IDISH0012



#### 8.5L WASHING TUB

- With carry handles

ITUB0012



#### 8L BIN

- With folding lid

IBIN0012



#### 30L STORAGE TUB

- With internal wire support frame and wheels

ISTORE0012



#### 45L STORAGE TUB

- With internal wire support frame and wheels

ISTORE0023

### TOOLS



IMALLET

#### TENT PEG MALLET

- Weight: 0.9kg



IAXE002

#### AXE

- Weight: 0.7kg



IAXE001

#### AXE / SPLITTER

- Weight (head): 2.0kg



ISHOVEL001

#### 3 PIECE SHOVEL

- Reinforced cushioned PVC handle
- CNC machined joining threads
- Hardened steel post hole blade
- Long shovel / short handled spade
- Tough storage bag





[www.ironman4x4.co.za](http://www.ironman4x4.co.za)

**Ironman 4x4 Center.**

1 Voortrekker Road. Alberton

**Showroom, Fitment center & Retail outlet**

Tel: +27 11 058 3026



Follow the "Ironvan"  
Adventures on our  
YouTube channel

Prices do not include freight or fitting.

Prices are subject to change without notice. Colours and styles may vary to those displayed. Some products may vary depending on vehicle model. Our goods come with guarantees that cannot be excluded under the Australian Consumer Law. You are entitled to a replacement or refund for a major failure and for compensation for any other reasonably foreseeable loss or damage. You are also entitled to have the goods repaired or replaced if the goods fail to be of acceptable quality and the failure does not amount to a major failure. E&OE.

©Copyright 2021 Ironman 4x4 Pty Ltd. No part of this publication may be reproduced or replicated without the prior written consent of Ironman 4x4 Pty Ltd.