

# The new Stonic



Movement that inspires



**View Offers**

**Book a Test Drive**

**Find Dealer**

**Build your Stonic**

# Grasp every moment

The new Kia Stonic brings fresh excitement to the crossover experience with its sleek muscular body, sporty compact styling, exceptional handling and outstanding performance. Its dynamic sporty appearance at the front is thanks to the 3-dimensional shape of the grille, vertical fog lamp housings and integrated full LED headlamps with powerful LED Daytime Running Lights. What's more it's sleek, sculpted tailgate and airflow-regulating silver skid plate give it that strong but silent urban feel which is guaranteed to turn heads.







# Be true to your own identity

Living in the moment means no boundaries, and that's exactly what you can expect inside the new Kia Stonic. Sculpted contours immediately please the eye and the senses, making driving fresh and fun. The D-cut steering wheel is shaped to stay clear of your legs, whilst the other controls are designed and positioned to place you and your demands in perfect unison.



**View Offers**

**Book a Test Drive**

**Find Dealer**

**Build your Stonic**

# Seize every second

When you're in control, information is essential, and the new Kia Stonic puts it right where you need it, while banishing any distractions. Bluetooth technology offers hands-free access to your phone using voice recognition, whilst the state-of-the-art information system with its floating colour touch screen keeps you fully informed and entertained.



## 4.2-inch supervision cluster

Between the speedometer and tachometer, the screen displays auto and audio information. An optional TFT-LCD screen offers multiple languages and pop-up messages too.



## USB front charger

A USB outlet lets you charge mobile phones and other compatible devices.



## Rear USB charging port

A USB jack at the rear of the centre console lets rear-seat occupants charge their devices too.



# Applaud the enthusiasm

Created exclusively by Kia, UVO Connect brings driving into the digital era in two distinct ways. Once activated, the Kia On-Board Services make use of the SIM card included in the infotainment system to retrieve and update live data for its services, so you have access to seamless information displayed directly on the navigation screen. And our new UVO app offers a range of data and information about your car through your Android™ or Apple™ smartphone. What's more, this exciting new technology has been developed to comply with the EU General Data Protection Regulation, ensuring the highest levels of data privacy, transparency and protection. Available on certain grades of the new Kia Stonic.



## Kia online navigation

Kia's Online Navigation system uses cloud-based servers to collect real-time and historical traffic information to predict the traffic ahead. That means that with Kia's Online Navigation you receive far more accurate navigation information and guidance instructions, and a much truer Estimated Time of Arrival (ETA).

**The Online Voice Recognition**, supported by server technologies, enables hands-free applications to use your voice commands to search for nearby Points of Interest (POIs), addresses or weather or simply to send text messages.

## Kia Live Services



### Live traffic information

The navigation system delivers highly accurate live traffic information from TomTom that is constantly updated, so you know exactly where traffic is running smoothly, or which areas to avoid. When things get busy, the system lets you know and suggests alternative routes.



### Camera/danger zones\*

Be alerted to a whole range of fixed and stationary speed cameras as well as restricted access zones. The system also alerts you to areas where accidents are particularly common.



### Weather forecast

With an up to three-day forecast available, you can simply type in your destination to view a complete summary, including minimum and maximum temperatures, wind speed and chances of sun or rain.



### Points of interest

Looking for a place to eat, a local business or somewhere special to visit? All this information and more is easily accessible with the live, regularly updated POI directory.



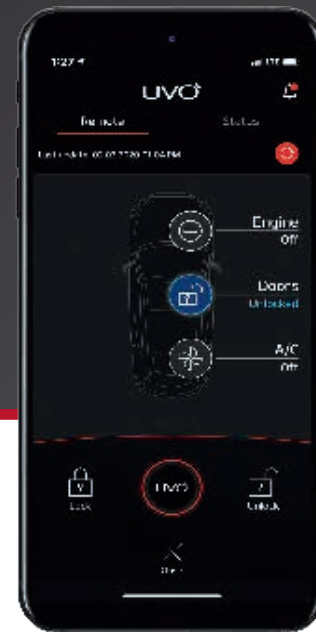
### Parking

Kia Live shows available parking locations before you arrive at your destination. It will show potential on-street parking and off-street parking, including locations, details, prices and availability.



### Fuel info

When you're running low on fuel, the system will show you the nearest petrol stations and prices using an online database, so you can plan your refuelling stops accordingly.



Shown app screen may vary from final product

## UVO App

Designed for both Android™ and Apple™ smartphones, the UVO app offers complete peace of mind with a whole range of features dedicated to providing diagnostic data about the status of your car and the trips you take. The app can also activate a range of remote functions and features when you are away from the car.

## Vehicle Information



### Find my car

tells you the last known location of your vehicle - ideal if you are parked in a large car park.



### Vehicle status

offers an overview of your car's status including battery charge level and ignition, and the status of the doors.



### My trips

gives a summary of your previous journeys including average speed, distance driven and time in transit.

## Notifications



Notifications can share **Diagnostic Notifications** with you about the current status of your car and, supply you with a Monthly Vehicle Report giving an overview of your car usage. You also receive push-up notifications whenever your car alarm is triggered, if any open windows, boot or hood or any unlocked doors are detected, or if you leave your engine on while in gear P with an open door - to help you reduce CO<sub>2</sub> consumption and also to prevent asphyxiation.

## Remote Services



### Send to car

allows you to pre-plan and set your journey through the app for seamless use in the navigation system.



### Last-mile navigation

to guide you right up to the door. Once you have parked your car, you can continue to use the navigation system remotely on your smartphone.



### Door control

offers remote locking and opening of the car doors without a key or fob.



### User profile transfer

lets you remotely check and change a whole range of vehicle settings - like sound and radio - on your smartphone. You can then store the changed settings in your UVO App, send them to your vehicle and apply them again with ease.

Information and control service for your Kia; the services will be available free of charge for a period of seven years commencing on the day the vehicle is sold to the first owner of the vehicle, i.e. the point in time the initial purchase agreement becomes effective, and may be subject to change during that period. Details of operation and terms of use can be obtained from your Kia partner and on [kia.com](http://kia.com). Smartphone with iOS™ or Android™ operating system and mobile phone contract with data option necessary, incurring additional cost.

\*The speed displayed in the navigation screen may differ from your actual speed.



## View Offers

## Book a Test Drive

## Find Dealer

## Build your Stonic



### 1. Live traffic\*\*

The navigation system delivers highly accurate live traffic information that is updated every two minutes, so you know exactly where traffic is running smoothly, or which areas to avoid. When things get busy, the system lets you know and suggests alternative routes.



### 2. Speed cameras\*\*

You'll also be alerted to a whole range of speed cameras, including fixed and stationary ones, as well as restricted access zones. The system can even take into account areas where accidents are particularly common, and warn you about these accident black spots.



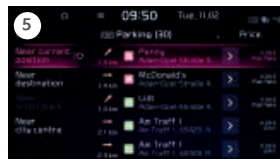
### 3. Local Search

If you're looking for a sushi restaurant, a supermarket or a particular place to meet, simply select Local Search. The database contains 500 searchable categories, 25,000 keywords and 250,000 locations to ensure you find what you need.



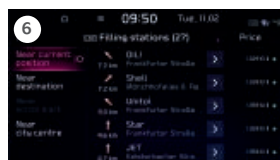
### 4. Weather forecast

Is your weekend away going to be sunny or a washout? Better check the weather forecast. Just type in your destination to view a four-day summary, complete with minimum and maximum temperatures, wind speed and chances of sun or rain.



### 5. Parking information

To help you park your car swiftly, the system will indicate parking areas before you arrive at your destination. It will show potential on-street parking spaces based on historic data, and off-street parking with colour-coded availability.



### 6. Fuel info

When you're running low on fuel, the system will show you the nearest petrol stations and prices using a TomTom online database, so you can plan your refuelling stops accordingly.



## androidauto

Android Auto™ is designed to keep you perfectly connected to your phone - while minimizing distractions so you stay safe on the road. The simple, intuitive interface lets you access features like Google Maps, apps, music and voice control, and automatically organizes info into simple cards that appear just when they're needed.



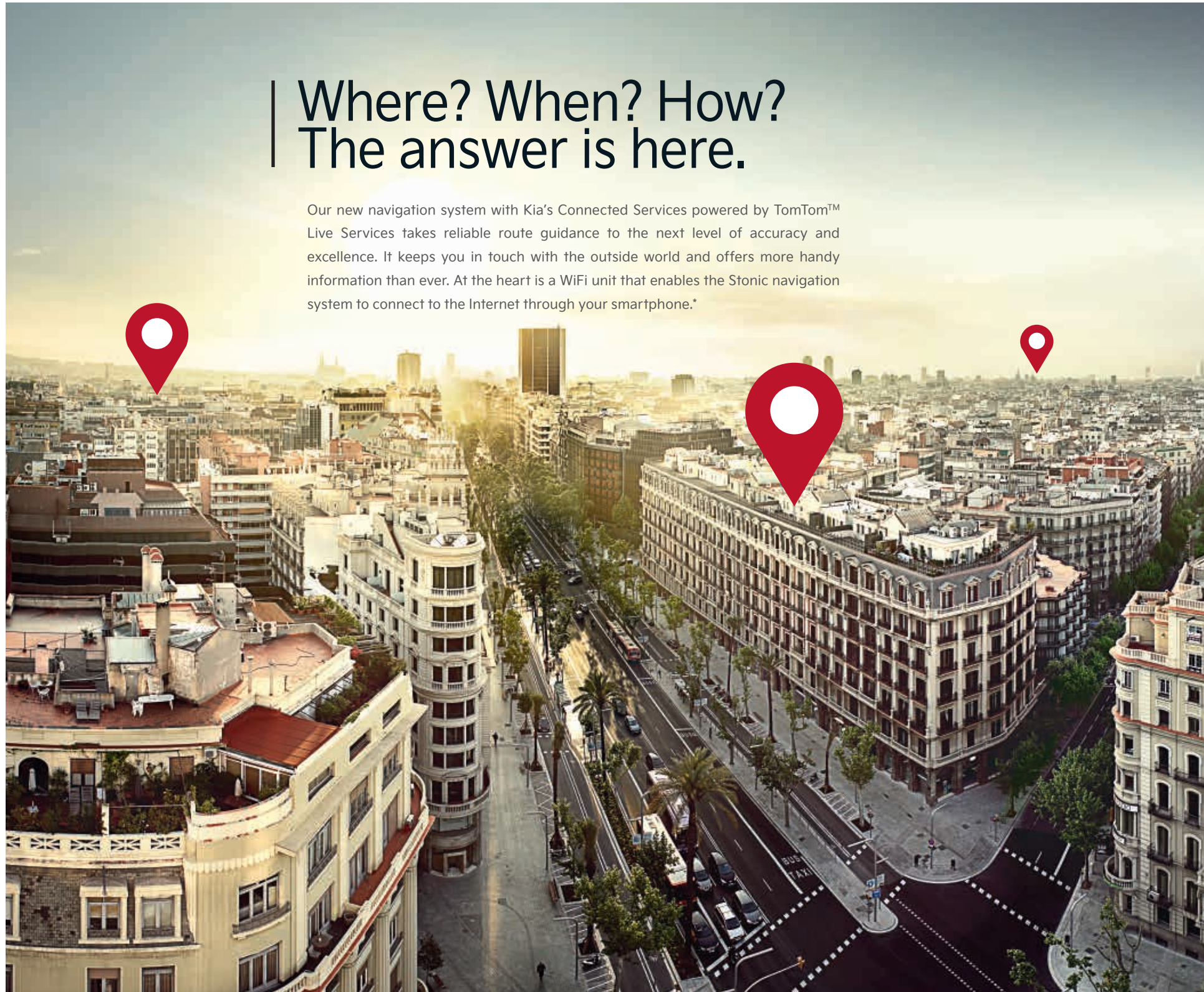
Apple CarPlay™ is a smart, safe way to use your iPhone while driving. It takes all the things you might want to do, and puts them into your Stonic's display, so you can get directions, make a call and listen to music - all while staying focused on the road.

\*Smartphone with data plan required to activate services.

\*\*Legal restrictions to these services may apply depending on country usage.

# Where? When? How? The answer is here.

Our new navigation system with Kia's Connected Services powered by TomTom™ Live Services takes reliable route guidance to the next level of accuracy and excellence. It keeps you in touch with the outside world and offers more handy information than ever. At the heart is a WiFi unit that enables the Stonic navigation system to connect to the Internet through your smartphone.\*





# Open to any possibility

It's easier than ever to set out and explore or simply tackle whatever the day brings in the new Kia Stonic which boasts flexible capacity from 352 litres to a huge 1,155 litres.



**Adjustable cargo floor.** Available on certain grades.

Position the cargo area floor higher to be flush with the folded seat backs (left) or lower to accommodate tall items (right). (The cargo floor in Mild Hybrid versions is always positioned lower.)



**Folding rear seats:**

Rear seats fold nearly flat, so you can fit long or bulky items in the extended cargo space.

**60:40 split-folding rear seats:**

The rear seat backs split 60:40 and fold flat separately, offering you useful choices for managing cargo and passenger space.



View Offers

Book a Test Drive

Find Dealer

Build your Stonic

# Forge new boundaries

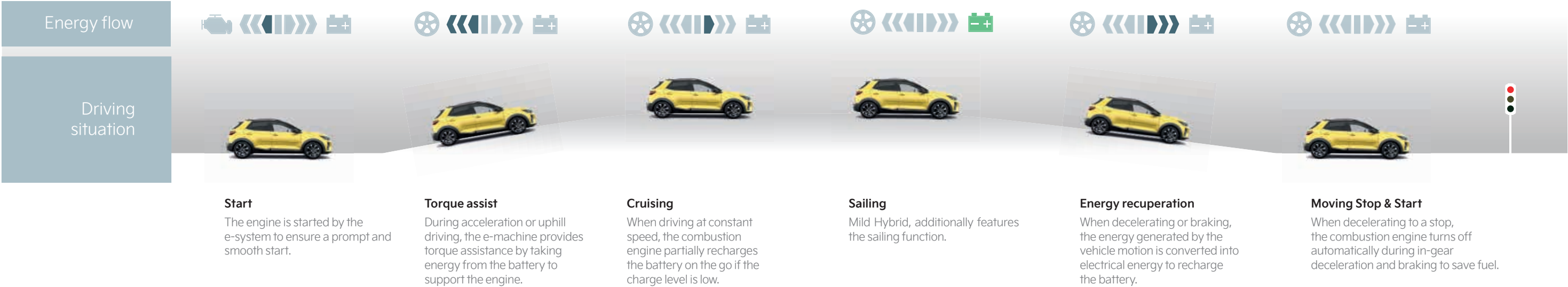
The New Stonic features an EcoDynamics+ Mild Hybrid Powertrain System, offering low-emission everyday driving. By cleverly pairing the latest 1.0 T-GDi gasoline engine with a 48-volt lithium-ion battery, it can reduce fuel consumption and vehicle emission levels. What's more, the integrated e-system recovers kinetic energy during deceleration phases to provide torque assistance when accelerating. Available on certain grades.



Simplified visual representation of the Mild Hybrid iMT sailing operation.

### Sailing Mode

When the driver lifts their foot from the throttle and lets the car sail without accelerating or braking, depending on the charge level of the 48-volt battery the engine will seamlessly and smoothly switch off, resulting in a more efficient ride. As soon as the throttle or brakes are pressed, the engine will immediately take over. The sailing function and the distance covered with the engine off depend on driving conditions and vehicle speed.





# Protect what you love

Wherever you are, whatever you're doing, you can be sure that the Kia Stonic is protecting you and the people around you. That's because it's engineered to help drivers stay out of trouble and to manage collision forces in ways that minimise damage.



### Cornering Brake Control (CBC)

Designed to help you stay on track when you turn, CBC applies asymmetrical braking force to individual wheels when braking whilst cornering, which counteracts any potential loss of traction meaning greater safety.

### Torque Vectoring System (TVBB)

An additional function of the integrated electronic stability control system, our new TVBB technology means the Kia Stonic maintains a higher degree of handling stability and security when cornering, while helping to reduce understeer during harder cornering.



### Hill-start Assist Control (HAC)

When you're on a steep upward incline, pulling away from a standing start can be a concern, but don't worry, HAC is designed to stop you from rolling backwards.

### Vehicle Stability Management (VSM)

Working in concert with the motor driven power steering, Kia's VSM helps ensure that the Stonic remains stable when simultaneously braking and cornering.

All features described are grade dependant.

### AHSS steel for greater strength and added cabin protection

The Stonic uses Advanced High Strength Steel (AHSS) to deliver greater average tensile strength that makes the body phenomenally rigid, enhancing cabin protection as well as dynamic performance.



### 98 metres of structural adhesive for reduced noise

Greater use of structural adhesive means the new Kia Stonic is both rigid and light, and offers outstanding noise and vibration management.

### 8 hot-stamping zones for extra strength

The Stonic features hot-stamping of components in eight core stress areas, contributing to exceptional rigidity, meaning the strengthened body structure helps provide improved crash protection.

### 6 airbags

Protection includes front airbags for the driver and front-seat passenger, two air-bags at the sides and two curtain airbags running the length of the cabin.





# Anticipate the unexpected

With Stonic's DRIVE WiSE technology, being at the wheel is simply more satisfying. Whether you're parking, manoeuvring city streets, in the fast lane or on the open road, DRIVE WiSE features watch out for trouble, alert you and even step in to help you stay in the clear.

## Rear Cross-Traffic Collision Warning (RCCW) & Rear Cross-Traffic Collision Avoidance Assist (RCCA)

When you back out of a parking spot or driveway, the radar-based RCCW warns you if it detects cross traffic in the lane the vehicle is entering. The RCCA system will automatically apply the brakes in order to avoid a collision with a vehicle crossing your path. Available on certain grades.



## Forward/Reverse Parking Distance Warning (PDW) with Switch On/Switch Off button

Ideal for confident parking, PDW uses ultrasonic sensors mounted on the bumpers to warn of any obstacles in front or behind when manoeuvring into a parking space. The audible beeps can be switched on or off. Available on certain grades.



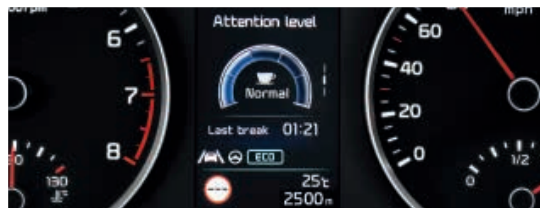
## High Beam Assist (HBA)

Responding automatically to the brightness of the lights of other vehicles and road conditions, HBA switches off the high beams temporarily to reduce glare that may affect other drivers.

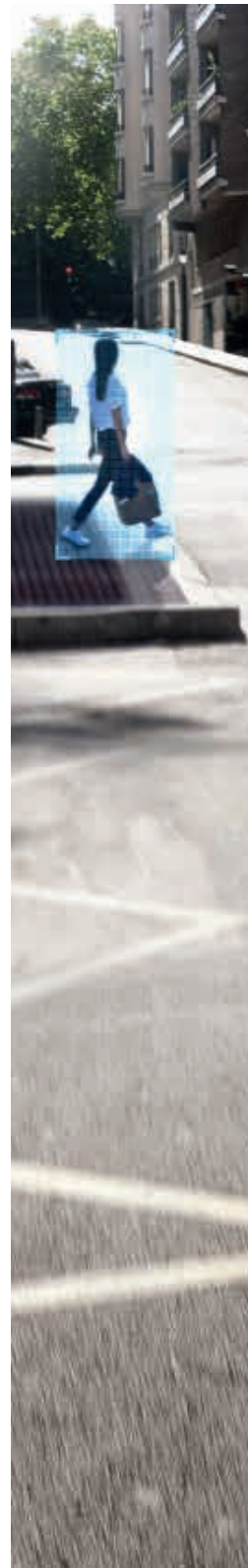


## Driver Attention Warning (DAW)

To help prevent distracted or tired driving, DAW monitors driver and vehicle inputs. If it senses reduced attention, it sounds a chime and displays a warning in the supervision cluster display.



All features described are grade dependant.



DRIVE  
WiSE



SAFETY



CONVENIENCE



EFFICIENCY

DRIVE WiSE uses the latest Advanced Driver Assistance System (ADAS) technologies to ensure occupant and pedestrian safety at all times, while never sacrificing the pleasure of driving.

## Forward Collision-Avoidance Assist (FCA)

Combining radar and camera data, FCA activates the brakes when it detects sudden braking by a car ahead, and can stop completely from speeds up to 60 km/h. If FCA senses a pedestrian or cyclist ahead, it warns you. If you don't respond, it will brake for you to avoid a potential collision or lessen its impact.

Images shown are for illustrative purposes only and not to UK specification. Features are not necessarily standard across the range.



# Safety at your fingertips

Every drive and every adventure has its pleasures and its challenges, and that's why no matter what sort of driving you're doing, the Kia Stonic delivers innovative features and cutting-edge technology to keep you and your passengers as safe as possible. So whether you're heading out for your next exciting road trip or heading into the city, you'll always know you and your passengers safety are being well protected.



## Blind-Spot Collision Warning (BCW) & Blind-Spot Collision -Avoidance Assist (BCA)

When you want to change lane, the BCW system detects any vehicle(s) in your blind spot and warns you with a warning symbol in your side mirror and on your centre display together with an audible alert. If you start to change lane whilst a car is in your blind spot, besides the warning the Stonic's BCA system will also automatically apply the brakes to avoid a collision. Available on certain grades.



## Intelligent Speed Limit Warning (ISLW)

The Intelligent Speed Limit Warning gives you all the necessary information to help you stay within the speed limits. Using the camera on the windscreen, it reads speed limits and overtaking restrictions, and displays the information clearly on the navigation screen and cluster so you can take any action needed. Available on certain grades.



## Lane Keeping Assist (LKA)

When you start drifting out of your lane, LKA alerts you and corrects your steering to keep you in the lane.



## Smart Cruise Control (SCC)

Using in-built radar, Smart Cruise Control can regulate both the Stonic's speed and the distance to the car in front. The system maintains the distance to the preceding vehicle by automatically adjusting your car's speed. If the vehicle in front slows down and the predetermined safe distance cannot be maintained, the system will reduce the speed. If the vehicle ahead picks up the pace, the Stonic accelerates up to the set speed. Available on certain grades.



## Lane Following Assist (LFA)

The system uses camera and radar sensors to maintain a safe distance to the preceding vehicle and monitors road markings to keep your car in the centre of your lane.



View Offers

Book a Test Drive

Find Dealer

Build your Stonic

# Details that count

Now that you’ve seen all the amazing things the New Stonic can do, it’s time to have a look inside: with a bespoke interior for each grade, from stunning cloth to stylish faux leather, you’ll want to get behind the wheel instantly.



**Black Cloth & Grey Faux Leather Upholstery**

Black & Grey cloth and faux leather trim seats, featuring coloured embossing with grey stitching that matches the metallic silver of the dash and glossy black centre console trim. The door armrests are a lighter grey.



**Black Cloth upholstery**

A pleasing combination of soft tricot and lightly patterned woven cloth seat material provides comfort and support. The doors and dash feature trim and painted metal in colors that complement the shades of the cloth trim.



**Black Cloth & Faux Leather Upholstery**

Black cloth and faux leather trim interior, featuring coloured embossing with grey stitching. The coordinated door and dash trim provides a consistently fresh and relaxing environment.



# Expect more

True style is knowing your own mind and expressing your own personality. That's why the Kia Stonic comes with a range of custom-designed accessories, from eye-catching side and tailgate trims to striking entry guards and more. Here's just a small selection of the wide range you can choose from to make your Stonic uniquely yours.



## Entry guards

First impressions always count and these stainless steel entry guards will give any passenger a flash of premium shine and a hint of the experience to come.



## Trunk liner

However wet, muddy or grimy things get, this custom-made liner will protect your trunk area. It is durable, anti-slip and waterproof with raised edges. Branded with the Stonic logo.



## All-weather mats, with grey accent

Whatever adventure you've been on, don't worry about wet, muddy or sandy shoes when you get back in the car. These durable and easy-to-clean floor mats protect the whole of your cabin floor. Also available in the red accent.



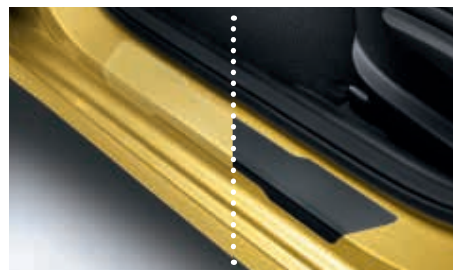
## Tailgate trim line, brushed

When attention to detail is a must, this brushed stainless steel tailgate trim line is the perfect expression of style and substance. Also available in chrome optic.



## Side trim lines, brushed

Uniquely elegant, these brushed stainless steel mouldings give the side contours of your Stonic that extra touch of excitement. Also available in chrome optic.



## Door sill protection foils

Driver and passenger feet can cause everyday wear and tear to your door sills over time. Protect them with a new surface layer and add these durable foils. Available in black and transparent.

Images shown are for illustrative purposes only and not to UK specification. Features are not necessarily standard across the range.



## Smart key and Button Start

When you have the Smart Key with you, you can simply access your car and start the ignition with a mere push of a button. When you have the Smart Key with you, you can simply access your car and start the ignition with a mere push of a button.



## Overhead console lamp with sunglasses case

An overhead console helps you stay organized and keeps your sunglasses just where you can find them, while keeping your eyes ahead.



## Centre console armrest

The comfortable sliding armrest is coordinated with the interior trim and integrated with a console that includes two cupholders and a storage compartment.

# Equip yourself for every eventuality

Short hops? Commutes? Weekend getaways? Adventures into the unknown? Whatever your needs, only you can decide what your vehicle is to you and what belongs in it. That's why the Stonic offers a wealth of equipment to help make it feel like it was custom-made for you from the start.



## Rain sensor

When it detects raindrops on the windscreen, the rain sensor activates the wipers accordingly. Available on selected grades.



## Rear-view Monitor with Parking Guidance

The rear-view camera projects dynamic, bending guidelines onto the image in the 7" dash display to recommend a path. Available on selected grades.





# 7 more reasons to join our Kia family

Now there are even more reasons to buy a stylish, technology packed Kia. Peace of mind comes as standard when you join the Kia family with the Kia Promise - 7 great owner benefits when you buy your Kia and register at MyKia.



There are a lot of things to consider when buying a new car. Compromising on reliability in the long term shouldn't be one of them. That's why Kia have redefined quality and offers a unique, industry-leading 7 year warranty that comes with peace of mind for at least 100,000 miles.



Our complimentary driveaway insurance, with up to 5 days of optional cover if required, will get you on the road right away and comes complete with one year's free Excess Return worth up to £250, protecting your excess whoever your insurer is. You can also upgrade to a great value, annual insurance policy. Our policies cover you for genuine Kia approved repairs, parts and labour, meaning you never have to compromise when keeping your Kia 100% Kia.



Our 24/7 Roadside Assistance package is designed for Kia owners in partnership with the RAC. All new cars have complimentary cover for 12 months from the first date of registration. If you register on MyKia, you can unlock Kia Roadside Assistance Plus, giving you the highest level of cover provided by the RAC, including onward travel and European cover.



Order Genuine Kia accessories, where and when you need them! Our Click & Collect service offers choice and convenience, recognising your model from the registration number to ensure you get exactly what you need. Then simply collect at your nearest Dealer, where they can fit them too.



Online service booking offers convenience and flexibility 24/7. Offering quality and value at one of our Dealers nationwide. Kia trained technicians use the latest diagnostic equipment and technology. All of our Genuine Kia parts come with a 2 year warranty. Fully inclusive pricing at the click of a button.



When you own a Kia, you become part of the family and benefit from a relationship based on trust and transparency. When you visit one of our dealers for a service, your vehicle will benefit from a complimentary Health Check, a wash and vacuum and alternative transport if needed. Welcome to the Kia family!



Available to all Kia owners, whoever your insurer and whatever the circumstances of the accident, Kia Accident AfterCare can take care of things for you. We'll liaise with your insurer, provide a free courtesy car and exercise your right to genuine Kia parts and repairs at a Kia Approved Bodyshop.

## Kia Care Service Plan

For complete peace-of-mind, Kia can offer you a great value fixed-price servicing package for your Stonic which is called Kia Care. Please speak to your Kia dealer for more information and pricing. Terms and conditions apply. Log onto [www.kia.com/uk](http://www.kia.com/uk) for details.

**5-year paint warranty & 12-year anti-perforation warranty**  
High-quality body paint ensures long-lasting protection and shine for your new Kia. It also comes with superior corrosion protection and a 12-year warranty against rust from the inside out.

**Financing**  
Your local Kia dealer can help you with a financing plan that's best suited to your needs. Log onto [www.kia.com/uk](http://www.kia.com/uk) for more details



Fully unlock these benefits when you register at **MyKia**

\*For full terms, conditions and exclusions please visit [kia.com/uk](http://kia.com/uk)

Images shown are for illustrative purposes only and not to UK specification. Features are not necessarily standard across the range.





[www.kia.com/uk](http://www.kia.com/uk)

All information and illustrations are based on data available at the time of print (January 2021) and are subject to change without notice. Contact your local Kia dealer for current information and full warranty details including terms and conditions. Imagery shown throughout this brochure is for illustrative purposes only and not to UK specification. Features shown are not necessarily standard across the Stonic range.

Kia Motors (UK) Ltd  
Walton Green  
Walton-On-Thames  
Surrey  
KT12 1FJ  
Freephone: 0333 2022990  
[www.kia.com/uk](http://www.kia.com/uk)



Movement that inspires



# The new Stonic

## The new Stonic '2'

### Paint colours

Zest Yellow (Standard)	Storm Grey (Premium)
Clear White (Optional)	Midnight Black (Premium)
Blaze Red (Premium)	

### Wheels



16" Alloy wheels  
205/55R16

### Engine and transmission

1.0 T-GDi 99bhp 6-speed manual  
1.0 T-GDi 99bhp 7-speed DCT

### '2'

- 16" Alloy Wheels (205/55R) with Locking Wheel Nuts
- High Gloss Black & Satin Radiator Grille
- Body-Coloured Exterior Door Handles
- Body-Coloured Door Mirrors with Matt Black Lower Housing
- Electrically Adjustable, Heated and Folding Door Mirrors with LED Indicator Lights
- Black and Body Coloured Bumpers
- Black Side Sills, Door Garnish and Wheel Arch Trims
- Front & Rear Silver Skid Plates
- Bi-function Projection Headlights with Static Bending
- Automatic Headlight Control
- Welcome and Follow-me-home Light Functionality
- LED Daytime Running Lights
- Front Fog Lights
- Body-Coloured Rear Spoiler with High-mounted Brake Light
- Aeroblade Type Front Wipers

- Forward Collision-Avoidance Assist (FCA) (City/Pedestrian/Cyclist)
- Lane Keeping Assist System (LKAS), Driver Attention Warning (DAW) & High Beam Assist (HBA)
- Roof Rails
- Black Cloth Upholstery
- Driver's Seat Height Adjuster
- Leather Trimmed Steering Wheel and Gearshift
- Silver Finish Interior Door Handles
- Overhead Console Lamp
- Air Conditioning
- All-round Electric Windows (with Driver's Auto Down Function)
- Driver & Front Passenger Sunvisors with Vanity Mirror & Illumination
- Cruise Control & Speed Limiter
- Remote Central Door Locking with Fold-away Key
- 60:40 Split Folding 2nd Row Seats
- Centre Armrest Storage Box
- Centre Console with Cupholders

- Glovebox with Illumination
- Overhead Console with Sunglasses Case
- Tyre Mobility Kit (TMK)
- 6-Speaker Audio System
- 8" Touchscreen Display with DAB Radio
- Bluetooth® with Music Streaming\*\*
- Apple CarPlay™ with voice control\*\*
- Android Auto™ with voice control\*\*
- 4.2" Supervision Colour Cluster Display
- Front USB
- Steering Wheel Mounted Controls
- Rear Parking Sensors\*
- Twin Front, Side & Curtain Airbags
- ABS with Electronic Brakeforce Distribution (EBD) & Brake Assist System (BAS)
- Electronic Stability Control (ESC) & Vehicle Stability Management (VSM)
- Hill-Start Assist Control (HAC)
- Rear USB Charging Port
- Tyre Pressure Monitoring System (TPMS)

## The new Stonic 'GT-Line'

### Paint colour

Zest Yellow (Standard)	Storm Grey (Premium)
Clear White (Optional)	Midnight Black (Premium)
Blaze Red (Premium)	Azure Blue (Premium)

### Wheels



17" GT-Line Alloy wheels  
205/55R17

### Engine and transmission

1.0 T-GDi 118bhp 48V 6-speed manual (IMT)  
1.0 T-GDi 118bhp 48V 7-speed DCT

### 'GT-Line' (adds over '2')

- 17" GT-Line Alloy wheels
- GT-Line Body-Kit
- GT-Line Black Cloth and Faux Leather Upholstery
- 8" Touchscreen Navigation with Telematics
- Gloss Black Door Mirrors with Matt Black Lower Housing
- Black Rear Spoiler with High-mounted Brake Light
- Privacy Glass (Rear Windows & Tailgate)

- D-Cut Perforated Leather Trimmed Steering Wheel
- Chrome Side Window Trim
- Satin Chrome Finish Interior Door Handles
- Solar Windshield Glass
- Black High Gloss Centre Fascia
- LED Bi-function Projection Headlights with Static Bending

- Aluminium Pedals
- Reversing Camera System
- Automatic Air Conditioning
- Automatic Defog System
- LED Front Fog Lights
- Drive Mode Select
- LED Rear Combination Lights

\* Parking Sensors may not match exterior body colour.

\*\* Please check with your dealer for mobile phone compatibility. Apple CarPlay™ and Android Auto™ via connectivity.



# The new Stonic

## The new Stonic 'Connect'

### Paint colours



### Wheels



17" Alloy wheels  
205/55R17

### Engine and transmission

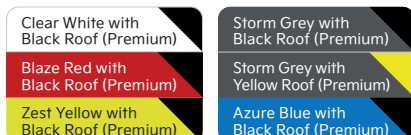
1.0 T-GDi 118bhp 48V 6-speed manual (IMT)  
1.0 T-GDi 120bhp 48V 7-speed DCT

### 'Connect' (adds over '2')

- 17" Alloy Wheels
- Two-tone Paint with Contrasting Roof Colour
- Roof-Coloured Door Mirrors with Matt Black Lower Housing
- Roof-Coloured Rear Spoiler with High-mounted Brake Light
- Black & Grey Cloth and Faux Leather Upholstery
- 8" Touchscreen Navigation with Telematics
- Reversing Camera System
- Privacy Glass (Rear Windows & Tailgate)
- LED Rear Combination Lights
- Rain Sensing Front Wipers
- Satin Chrome Finish Interior Door Handles
- Smart Key With Engine Start/Stop Button
- D-Cut Perforated Leather Trimmed Steering Wheel
- Chrome Side Window Trim
- Automatic Air Conditioning
- Automatic Defog System
- Auto-dimming Rear-view Mirror
- High Gloss Black Centre Fascia
- Drive Mode Select

## The new Stonic 'GT-Line S'

### Paint colours



### Wheels



17" GT-Line Alloy wheels  
205/55R17

### Engine and transmission

1.0 T-GDi 118bhp 48V 6-speed manual (IMT)  
1.0 T-GDi 118bhp 48V 7-speed DCT

### 'GT-Line S' (adds over 'GT-Line')

- Two-tone Paint with Contrasting Roof Colour
- Roof-Coloured Door Mirrors with Matt Black Lower Housing
- Roof-Coloured Rear Spoiler with High-mounted Brake Light
- Intelligent Speed Limit Assist (ISLA)
- Rain Sensing Front Wipers
- Smart Cruise Control (DCT Only)
- Smart Key With Engine Start/Stop Button
- Blind Spot Collision Warning (BCW)
- Blind Spot Collision Avoidance - Rear (DCT only)
- Heated Seats & Heated Steering Wheel
- Passenger Seat Height Adjust
- Front Parking Sensors\*
- Auto-dimming Rear-view Mirror
- Luggage Net

\* Parking Sensors may not match exterior body colour

\*\* Please check with your dealer for mobile phone compatibility. Apple CarPlay™ and Android Auto™ via connectivity.