



## PROTECT YOUR NEW PORSCHE

---

OPTIONS

KEEP YOUR PORSCHE LOOKING AS GOOD  
AS NEW BOTH INSIDE AND OUT WITH  
OUR RANGE OF EXTERIOR AND INTERIOR  
PROTECTION PRODUCTS.

EXPLORE OUR BODYCARE AND PAINT  
PROTECTION OPTIONS AND SELECT A  
PRODUCT THAT WORKS FOR YOU TO  
MAINTAIN THAT SHOWROOM FINISH FOR  
YOUR NEW PORSCHE.

PRODUCT(S) WILL BE APPLIED PRIOR TO  
COLLECTION OF YOUR NEW CAR, GIVING YOU  
THE PEACE OF MIND THAT YOUR PAINTWORK  
AND INTERIOR IS PROTECTED FROM THE  
MOMENT YOU DRIVE AWAY.



# BODYCARE

JARDINE MOTORS GROUP





## WHY SHOULD I CONSIDER BODYCARE?

Whilst your car manufacturer paint warranty will cover you against corrosion and manufacturing paint defects, it will not protect against everyday environmental damage. Bodycare will provide you against paint fading, road salts, insect fluids, tree saps, bird droppings, acid rain and other atmospheric pollutants.

### Benefits of BodyCare

- BodyCare will help to maintain the showroom look both inside and out, by providing a protective layer on the paint and fabric, (leather protection is also available as an option)
- It will also help to protect your investment, by maintaining the cosmetic appearance of the car, thereby enhancing the residual value upon part exchange
- BodyCare is supplied inclusive of a lifetime of ownership guarantee on paint and fabric. Lifetime of ownership guarantee on leather is also available as an option.





## IMPORTANT INFORMATION ABOUT BODYCARE

- Whilst BodyCare will provide some resistance to stone chips and scratches, it will not prevent these from happening and therefore stone chips and scratches are not covered under the lifetime of ownership guarantee
- Damages from bird droppings are covered under the guarantee, but these should be removed from the paint surface as soon as possible and within 7 days at the latest.
- The BodyCare guarantee will not cover any accidental damage or vandalism to the paintwork. Where body damage has been repaired, BodyCare should be reapplied to the affected areas in order to maintain the guarantee
- BodyCare fabric protection coats the individual fibres and protects against everyday spillages, but will not protect against dyes, paints, inks, bleaches, adhesives and corrosive substances.

Any areas repaired or replaced through accident or damage must be retreated immediately by an approved Jewelultra dealer and the details noted on the invoice.

Please see the BodyCare full terms and conditions for further information.

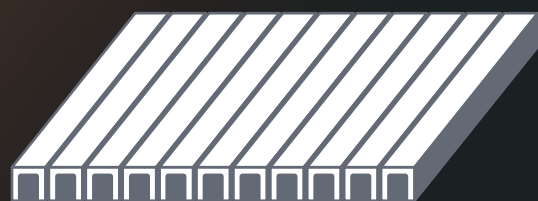




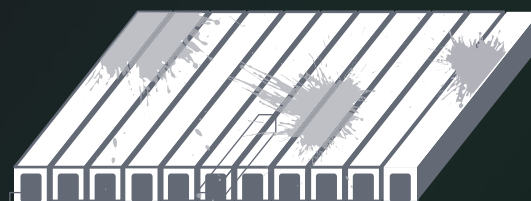
## 'STRAIGHT FROM THE SHOWROOM' LOOK

BodyCare is professionally applied to the vehicle's paint and fabric, giving protection from everyday environmental pollutants.

- Modern cars are finished with water-based paints, which leave a porous finish that is only detectable under a microscope. BodyCare forms a protective seal to remove these tiny imperfections from the paint.
- BodyCare removes the need for polishing which saves time, effort and expense, whilst providing a long-term protective coating.
- BodyCare will help to maintain the condition of your vehicle's paint and interior, leading to a higher residual value on part exchange.



Modern paintwork is porous



Minute particles of everyday road dirt and pollutants stick to the pores of the paint



**Stage 1** removes dirt from the pores and fills the tiny imperfections in the paintwork



**Stage 2** chemically bonds with stage one to form a hard protective coat





## HOW BODYCARE PROTECTS YOUR FABRIC

### Paint Care

Paint care provides a professionally applied, high gloss protective coating to your car's paintwork with a lifetime of ownership guarantee against fading, road salts, traffic film, acid rain, tree saps, insect fluids and bird lime damage. It removes the need for polishing and only needs to be washed regularly. A quality car shampoo is provided in your aftercare pack.

### Fabric Care

Fabric Care provides guaranteed protection against everyday spillages including coffee, juice, ice lollies etc. Spillages can be removed immediately with a cloth or, if left to dry, can be removed using upholstery cleaner.

### Carpet Care

Carpets take so much abuse that often simple vacuuming isn't enough. Carpet Care seals the base and surface fibres to enable dirt and grime to be easily removed.

### Leather Care

Fully guaranteed leather protection is available as an option with BodyCare. It provides a coating on the leather that protects against everyday spillages and stains. There is also leather feed and cleaner supplied with the aftercare pack, which can be used periodically to help prevent the leather from drying and cracking and can also be used to remove everyday stains.



#### Untreated fabric/carpet

Dirt and spills are difficult to clean, leaving stubborn stains and tide marks even after cleaning.



#### Treated fabric/carpet

Dirt and spills are easily cleaned. No permanent staining, guaranteed.



# TOTAL SURFACE PROTECTION PLATINUM

---

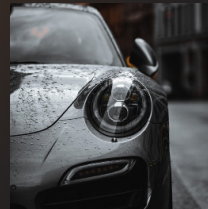
GTECHNIQ





## WHAT IS PROTECTED?

The Gtechniq Platinum system is exclusive to car dealerships, and provides lasting protection for:



PAINT



GLASS



INTERIOR



WHEELS

### Why Gtechniq Platinum?

Gtechniq are the global leaders in ceramic and other durable surface coatings. Platinum offers a scientifically tested, nano-based system of protective treatments that outperform anything else.

In 2001 Gtechniq was formed out of dissatisfaction with aftermarket surface protection products for cars. Advances in chemical nanoengineering, combined with a rigorous laboratory and real-world testing regime, has allowed Gtechniq to create a range of innovative products that are continually improved for maximum performance.

Trained technicians make sure your car is treated from roof to sills, helping to maintain its perfect showroom finish and resale value for years to come. Platinum keeps your cars finish looking slick, and offer UV , swirls, and chemical resistance.

Gtechniq Platinum has been laboratory tested by a number of leading Paint Protection Film (PPF) manufacturers and has been approved for use on their films. Using Platinum on a PDF protected car will make it easier to maintain and protect it from UV damage.





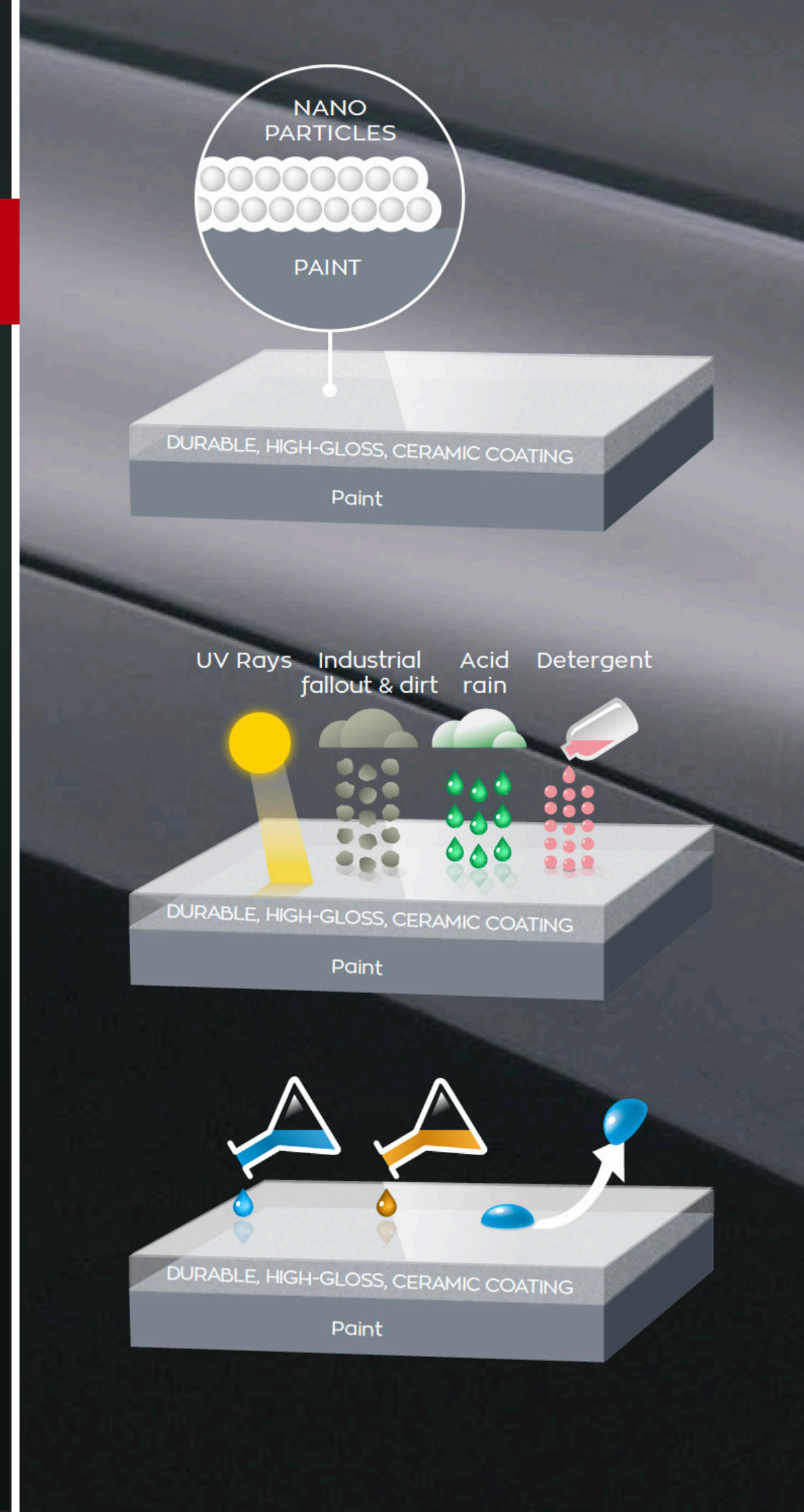
# PAINT PROTECTION

## The science behind the shine

Platinum Crystal Coat forms an ultra-durable, high-gloss, slick-to-touch, chemically bonding, inorganic layer of 9h optically clear ceramic. This ceramic protection actively reduces the number of swirls in your car's paintwork, retaining its candy-like gloss, and new look much longer than any wax or standard sealant.

The coating has been scientifically formulated to chemically bond to the surface of your car's paintwork. The chemical bond makes the coating the active surface of the car, shielding it from dirt, acid rain and detergent.

Its highly dense layer is resistant from pH2 - pH12. This makes contaminants such as tree sap, tar and hard water spots easier to remove.

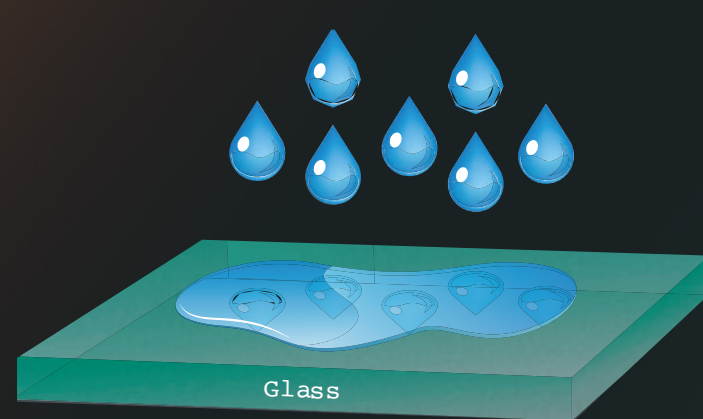




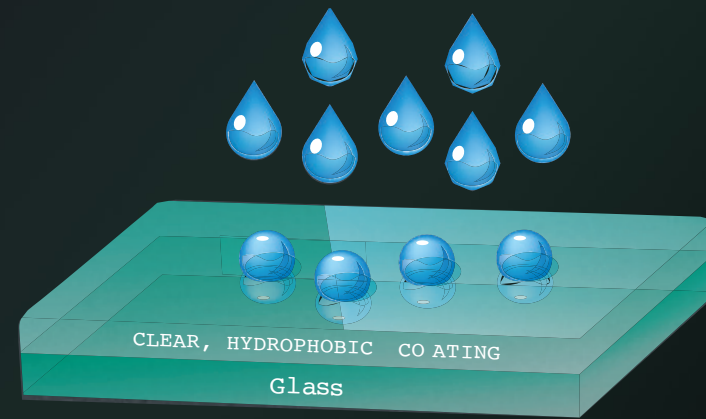
## GLASS PROTECTION

All external windows are treated with a hydrophobic coating which is durable and optically clear. The non-stick nature of the coating makes your glass so much easier to clean. Rainwater is repelled off your windows offering fantastic wet weather visibility, and added driving safety.

Gtechniq glass protection has been used by a number of World Rally Championship Teams to improve visibility, and make driving safer.



**Without** Platinum protection



**With** Platinum protection





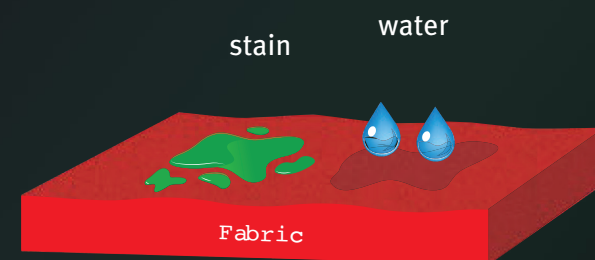
## INTERIOR PROTECTION

Research suggests we spend an average of 30 hours a year stuck in traffic alone. This makes the interiors of cars subjected to conditions which can encourage the growth of microbes. Food remnants, spillages, dirt, little sticky fingers, and dust, can support the growth of microorganisms like bacteria and fungi.

Gtechniq's interior products keep leather and fabric looking newer, and smelling fresher for longer. Using Gtechniq with added Biocote® to protect your car's interior can help prevent the growth of microbes.

### Leather

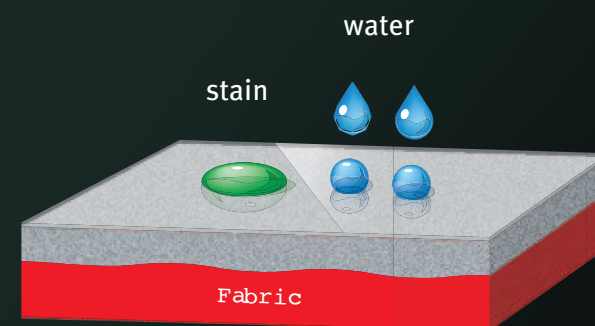
On top of the Biocote® benefits, Gtechniq leather protection can reduce wear on prone areas of leather or vinyl seats, such as piping and leading edges. It also makes dye transfer from clothing easier to remove.



**Without Platinum protection**

### Fabric

Fabric soiling can be reduced dramatically by using Gtechniq Platinum on the interior of your car. Spilt coffee, kids' ice creams, even coke, can in most cases be wiped away with a damp cloth, without staining.



**With Platinum protection**





# PAINT PROTECTION FILM

---

TOPAZ





## WHAT IS PAINT PROTECTION FILM

Paint protection film or PPF was initially conceived and developed by the US military as a way to protect helicopter rotors and other sensitive parts from debris and other intrusions. The thick film was applied on leading edges and potential impact areas, designed to be hard wearing and easily replaced in an environment where aesthetics were far from a necessity. As with so many modern day applications, what started as military technology eventually found way to the commercial sector and, over several decades, has developed into the various products that protect our cars today.

Constructed from a combination of advanced elastomeric polymers, our PPF's special clear coat not only prevents the film from discolouring due to contamination and ultra-violet radiation, but also heals itself from swirl marks and light scratches that can occur through ordinary washing and drying or daily driving.

The mirror smooth finish of our PPF ensures that no unwanted texture, commonly referred to as "orange peel", is added to the appearance of your car, leaving the protected surface indistinguishable from the factory paint.

The enhanced workability of our PPF's adhesive allows the film to be contoured around the most complex surfaces without distortion - so you can show off a perfect finish, not seams, wrinkles, and ripples.

Topaz PPF paint protection film combines **best in class durability and clarity not previously available on the market**. With it's very low surface energy Topaz PPF's clear coat sheds contaminants that would otherwise stain or yellow conventional films.

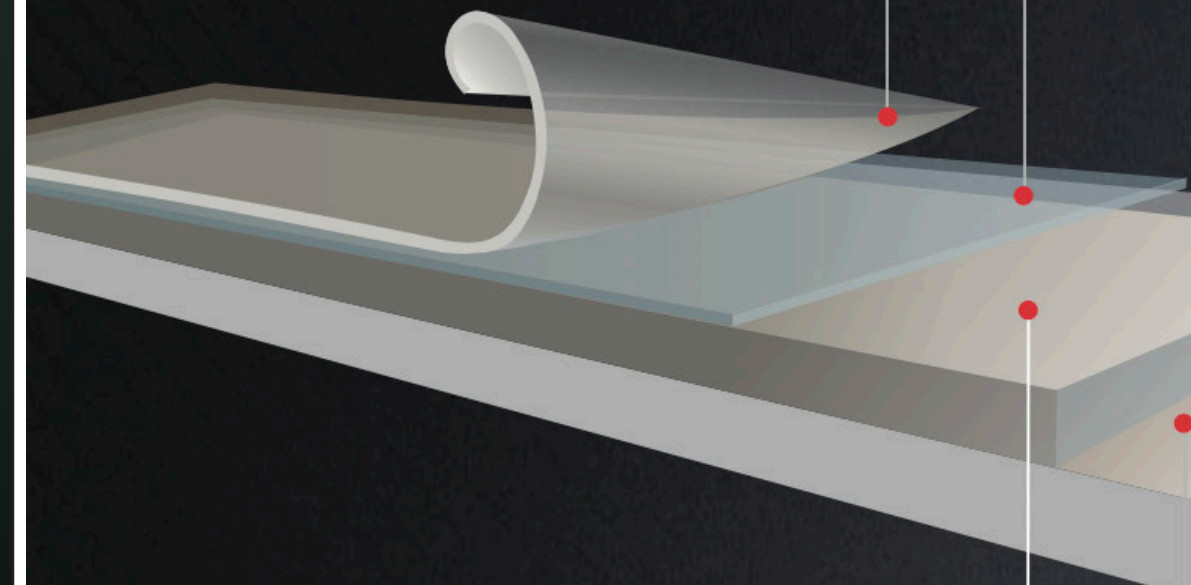
Elastomeric polymers heal over time, to naturally eliminate swirl marks and other fine scratches.

### POLYURETHANE:

0.013 mm

### CLEARCOAT:

0.152 mm



### ACRYLIC ADHESIVE:

0.040 mm

### POLYESTER RELEASE LINER:

0.076 mm



## BENEFITS OF TOPAZ

WITH TOPAZ PPF

WITHOUT TOPAZ PPF



Swirls

Scratches

Stone Chips

- Lower Maintenance
- Higher Gloss Factor
- Near Invisible Look
- Ultimate Protection



## BENEFITS OF TOPAZ

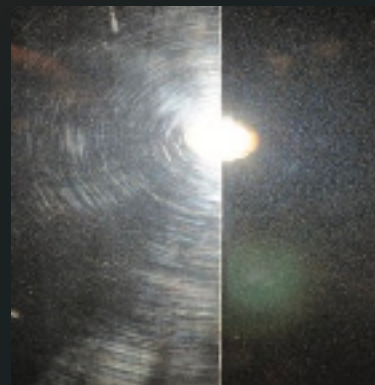
### Protection

Topaz PPF protects your paintwork from chips, minor scuffs and scrapes, environmental factors such as bug splatter and protects the finish against defects from poor washing techniques.



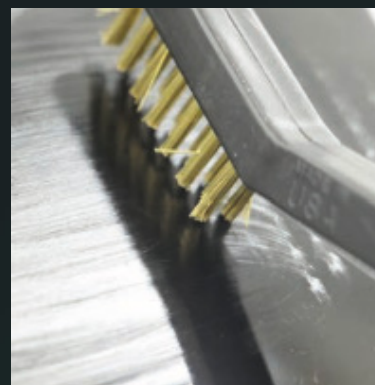
### Enhancement

Topaz PPF has a superior optical clarity and is very easy to maintain. When looked after correctly it gives a depth of shine like freshly detailed paint for many years.



### Self Healing

Topaz PPF has a self healing layer. Stone chips, scuffs, scratches and swirls that don't penetrate this layer disappear with the application of heat from hot tap water, the car's engine or even just the sun.



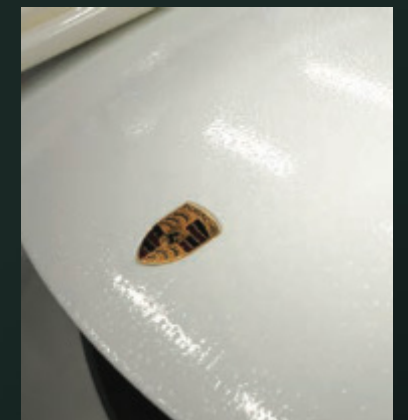
### Replacement

If a panel needs replacing, you won't be off the road for long. Most panels can be replaced within a couple of hours – unlike traditional paint repairs, which often take days or even weeks.



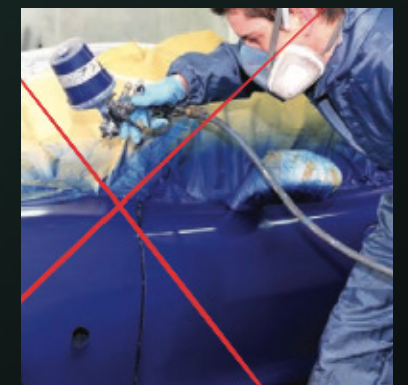
### Time & Convenience

Should a panel require replacement it is a quick turnaround, most panels can be replaced within a couple of hours whereas paint repairs run into days even weeks.



### Cost

Because Topaz PPF is specifically designed to fit each panel it can be replaced individually meaning little or no need to strip the panels and no extra paint to blend the colour to adjacent panels.





# PAINT PROTECTION PRICES

---

BODY CARE, GTECHNIQ, PPF INSTALLATION





BODY CARE – WAXED BASE PRODUCT

Premium Kit (Non leather)	£499.00 inc vat
Leather Kit	£549.00 inc vat

GTECHNIQ – CERAMIC COATING

Platinum ceramic protection	£718.80 inc vat
Full detail and crystal serum	£1,499.00 inc vat





# PPF INSTALLATION

Macan	Full Front	£2340 inc vat
	Full Front + Sills	£2820 inc vat
	Full Car Cover excluding rear diffuser	£5700 inc vat
Cayenne/ Panamera	Full Front + Sills	£3060 inc vat
	Full Car Cover excluding rear diffuser	£5940 inc vat
	Rear Bumper and Loading Area	£600 inc vat
911	Full Car Cover excluding rear diffuser	£4800 inc vat
718 Cayman & Boxster	Full Front	£2100 inc vat
	Full Front + Sills	£2580 inc vat
	Full Car Cover excluding rear diffuser	£4740 inc vat
Taycan	Full Front + Sills	£3060 inc vat
	Full Car Cover excluding rear diffuser	£5490 inc vat
	Rear Bumper and Loading Area	£600 inc vat
Specialist		On request.







Jardine Specialist Cars Limited is authorised and regulated by the Financial Conduct Authority for credit-related activities and insurance distribution activities, FRN 310919.  
We are an insurance intermediary and not the insurer. Each of the products have their own terms and conditions and it is important you consider these carefully when discussing your options.  
Each of the products are only available when purchasing a new or used vehicle. Subject to availability. Terms and conditions apply, which are available on request.