

Your Personalised Jaguar

# JAGUAR F-PACE

F-PACE CHEQUERED FLAG D180 Ingenium 2.0 litre 4 cylinder 180PS Turbocharged Diesel (Automatic) All Wheel Drive



THE ART OF PERFORMANCE





# EXTERIOR



	DESCRIPTION	PRICE
<b>EXTERIOR FEATURES</b>		
EXTERIOR COLOUR	Eiger Grey	£0.00
COLOUR TONE	Gloss finish	£0.00
WHEELS	20" Style 5031, 5 split-spoke, Gloss Black	£0.00
BRAKE OPTIONS	325mm Front Brakes	£0.00
ROOF OPTION	Fixed Panoramic Roof	£0.00
ROOF RAILS	Gloss Black Roof Rails	£0.00
PRIVACY GLASS	Privacy glass	£395.00
WINDOW SURROUNDS	Gloss Black side window surrounds	£0.00
HEADLIGHTS	Xenon headlights with LED signature Daytime Running Lights	£0.00
		<b>TOTAL £395.00</b>



EXTERIOR COLOUR



COLOUR TONE



WHEELS



BRAKE OP-TIONS



ROOF OP-TION

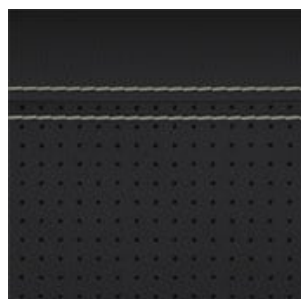


ROOF RAILS

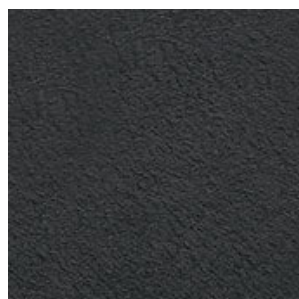
# INTERIOR



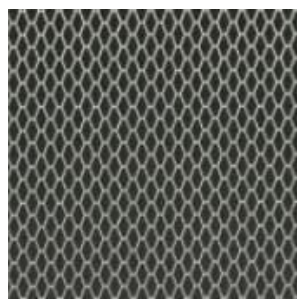
	DESCRIPTION	PRICE
<b>INTERIOR FEATURES</b>		
INTERIOR TRIM	Ebony Grained leather with Light Oyster stitch	£0.00
SEAT	Sport Seats	£0.00
FRONT SEATING	10-way electric front seats	£0.00
HEADLINING	Ebony Suedecloth Headlining	£0.00
VENEER	Meshed Aluminium trim finisher	£0.00
MATERIAL	Soft grain leather Sport steering wheel	£0.00
STEERING WHEELS	Heated steering wheel	£0.00
SUPPRESSED LOADSPACE	No loadspace storage rails	£0.00
AUDIO	Meridian™ Sound System	£0.00
		<b>TOTAL £0.00</b>



INTERIOR TRIM



HEADLINING



VENEER



MATERIAL



STEERING WHEELS

SUP-  
PRESSED  
LOADSPACE

# OPTIONS

	DESCRIPTION	PRICE
<b>EXTERIOR FEATURES</b>		<b>£420.00</b>
Auto-dimming, power fold, heated door mirrors with approach lights	-	£420.00
<b>INTERIOR FEATURES</b>		<b>£250.00</b>
4-way electric lumbar adjust	-	£250.00
		<b>TOTAL £670.00</b>



# STANDARD FEATURES

## FRONT GRILLE

Gloss Black grille with Gloss Black surround

## DRIVER DISPLAY

Interactive Driver Display

## EXTERIOR FEATURES

R-Sport rear bumper	S front bumper	Heated rear screen with timer
Variable intermittent wipers	Approach Illumination (automatic via remote) & follow me home lighting	LED tail lights
Heated door mirrors	Rain sensing windscreen wipers	Headlight power wash
Front fog lights	20d AWD badge	Powered tailgate
Heated front windscreen and washer jets	Tyre Repair System	Tyre Pressure Monitoring System (TPMS)
JAGUAR Script and Leaper	F-PACE badge	Rear fog light(s)
Gloss Black side vents with Limited Edition badge	Body-coloured door mirror caps	Body-coloured door claddings with Gloss Black finishers

## INTERIOR FEATURES

Auto-Dimming interior rear view mirror	Premium carpet mats	Bright metal pedals
Metal loadspace scuff plate	Satin Chrome Touchscreen Surround	Twin front cupholders with cover
Additional power sockets	Lockable glovebox	Centre console storage surround finishers in Satin Chrome
Manually adjustable steering column	Ambient Interior Lighting	40:20:40 split fold rear seat
JaguarSense with Overhead Light Console	Rear passenger air vents	Loadbay with Premium Luggage Tie Downs
Centre console with side stowage	Shopping bag hooks in boot	Satin Chrome gearshift paddles
Two-zone Climate Control	Heated front seats	Rear armrest with twin cupholders
Luxtec door trim	Rear centre headrest	Rear metal treadplates
Centre Console storage surround finishers in Satin Chrome	Metal treadplates with Limited Edition branding	Luxtec wrapped instrument panel topper with wrapped binnacle

## DYNAMIC FEATURES

Trailor Stability Assist	All Wheel Drive (AWD)	Cruise Control and Speed Limiter
All Surface Progress Control (ASPC)	8-speed Automatic Transmission	Dual tailpipes with 75mm finishers
Hill Launch Assist	JaguarDrive Control	Electric Power Assisted Steering (EPAS)
Speed proportional steering	Electric Parking Brake (EPB)	Brake pad wear indicator
Unpainted brake calipers	Rotary shifter	Open Differential with Torque Vectoring by Braking

## SAFETY & SECURITY

Rear Camera	Traffic Sign Recognition and Adaptive Speed Limiter	Emergency Braking
Valet Mode	Emergency Brake Assist	Dynamic Stability Control and Traction Control
Perimeter Sensing Alarm and Immobiliser	Power operated child locks	Airbags - Driver and front passenger, with seat occupant detector for passenger
Airbags - front side	Airbag - Full length side curtain window	Rear ISOFIX
Driver Condition Monitor	Lane Keep Assist	Front and Rear Parking Aid
3-flash lane change indicators	Seat belt reminder	Passive front head restraints

## INFOTAINMENT

Digital Audio Broadcast (DAB) Radio	InControl Apps	Remote Premium for Warranty Period
Pro Services and Wi-Fi Hotspot	Navigation Pro	Protect
Eco Data	Bluetooth® connectivity	Bluetooth® Streaming
Dynamic Volume Control	CD/DVD Player	10" Touch Pro
Voice Control	Start-up sequence with movement, dials and lighting	Trip Computer
Android Auto™	Apple CarPlay®	

# TECHNICAL SPECIFICATIONS



## PERFORMANCE

Maximum speed mph (km/h)	129 (208)
Acceleration (secs) 0-60mph (0-100 km/h)	8.4 (9.0)

## FUEL ECONOMY

Combined NEDC Equivalent (NEDCeq) CO <sub>2</sub> Emissions - g/km	155
Combined WLTP Consumption TEL - mpg (l/100km)	41.9± (6.7)
Combined WLTP Consumption TEH - mpg (l/100km)	38.3± (7.4)
Tank capacity (litres approx.)	60

Figures may vary according to model, wheel fitment and optional extras fitted.

## POWERTRAIN

Capacity (cc)	1,999
Maximum power (PS(kW)/rpm)	180 (132) / 4,000
Maximum torque (Nm/rpm)	430 / 1,750-2,750
Transmission	8-speed Automatic

## WEIGHTS

Unladen weight (EU) (kg) - Includes a 75kg driver, full fluids and 90% fuel	1,845
Unladen weight (DIN) (kg) - Includes full fluids and 90% fuel	1,770
Gross Vehicle Weight (GVW) (kg)	2,460

## TOWING

Unbraked trailer (kg)	750
Maximum towing (kg)	2,400
Maximum coupling point (nose weight) (kg)	175
Maximum vehicle and trailer combination (GTW) (kg)	4,860

## ROOF CARRYING

Maximum roof load (including cross bars) (kg)	75
---	----

## DIMENSIONS

Height (mm)	1,666
Length (mm)	4,731
Width with mirrors folded (mm)	2,071

## DIMENSIONS

Width with mirrors out (mm)	2,175
Front wheel track (mm)	1,641
Rear wheel track (mm)	1,654
Wheelbase (mm)	2,874

## HEADROOM

Maximum front/rear headroom with standard roof (mm)	1,007 / 977
Maximum front/rear headroom with pano roof (mm)	978 / 952

## LEGROOM

Maximum front/rear legroom (mm)	1,023 / 944
---------------------------------	-------------

## LOADSPACE CAPACITY

Height (mm)	777
Width (mm)	1,253
Width between arches (mm)	1,050
Length behind first row (mm)	1,824
Maximum loadspace volume behind first row - Dry (litres)	1,290**

## LOADSPACE CAPACITY

Maximum loadspace volume behind first row - Wet (litres)	1,731**
Length behind second row (mm)	1,030
Maximum loadspace volume behind second row - Dry (litres)	385**
Maximum loadspace volume behind second row - Wet (litres)	650**

## GROUND CLEARANCE

Standard ride height (mm)	161
---------------------------	-----

## TURNING CIRCLE

Kerb-to-kerb (m)	11.59
Wall-to-wall (m)	12.29
Turns lock-to-lock (no. of turns)	2.52

## PRICING

BASE	£46,085.00
CONFIGURED OPTIONS TOTAL	£1,065.00
Vehicle First Registration Fee	£55.00
Vehicle Excise Duty	£855.00
FINAL PRICE	£48,060.00*

Prices shown are effective from 18th March 2019. The information, specification and colours on this website may vary from market to market and are subject to change without notice. Some vehicles are shown with optional equipment that may not be available in all markets. Please contact your local retailer for local availability and prices. Fuel consumption figures: the results given here do not express or imply any guarantee of the fuel consumption of any particular vehicle with which this information may be supplied. Vehicles are not individually tested and there are inevitable differences between individual vehicles of the same model. The vehicle may also incorporate particular modifications. Vehicle is subject to availability and may vary from image shown. Vehicle price shown includes VAT, Road Fund Licence and First Registration Fee, actual price will be set by the Retailer. Promotions are available for a limited time at participating Retailers only, please contact your local Retailer to confirm vehicle availability, current prices and promotions.

In order to confirm your final part-exchange valuation, your chosen retailer will need to see your vehicle and carry an on-site inspection / appraisal. It will be fully and fairly appraised, including a road test before confirming the final part-exchange valuation to trade in your vehicle. If your chosen retailer considers that the value of your vehicle is affected by any aspect of its history or condition, the final part-exchange valuation your chosen retailer offers may differ from the indicative online valuation.

† Figures provided are NEDCeq calculated from official manufacturer's WLTP tests in accordance with EU legislation. For comparison purposes only. Real world figures may differ. CO<sub>2</sub> and fuel economy figures may vary according to wheel fitment and optional extras fitted. NEDCeq are figures calculated using a Government formula from WLTP figures equivalent to what they would have been under the old NEDC test. The correct tax treatment can then be applied.

‡ Figures provided are WLTP. WLTP is the new official EU test used to calculate standardised fuel consumption and CO<sub>2</sub> figures for passenger cars. It measures fuel, energy consumption, range and emissions. This is designed to provide figures closer to real-world driving behaviour. It tests vehicles with optional equipment and with a more demanding test procedure and driving profile.

TEL (Test Energy Low) and TEH (Test Energy High) figures are shown as a range under WLTP testing measures. TEL refers to the lowest/most economical figures (with the lightest set of options). TEH refers to the highest/least economical figures (with the heaviest set of options). WLTP legislation dictates that where there is <5g CO<sub>2</sub> variance between TEL and TEH, only the TEH is declared.

- [International Sites](#)
- [Sitemap](#)
- [Terms and Conditions](#)
- [Cookies and Privacy Policy](#)

© Jaguar Land Rover Limited 2020: Registered office: Abbey Road, Whitley, Coventry CV3 4LF. Registered in England No: 1672070

